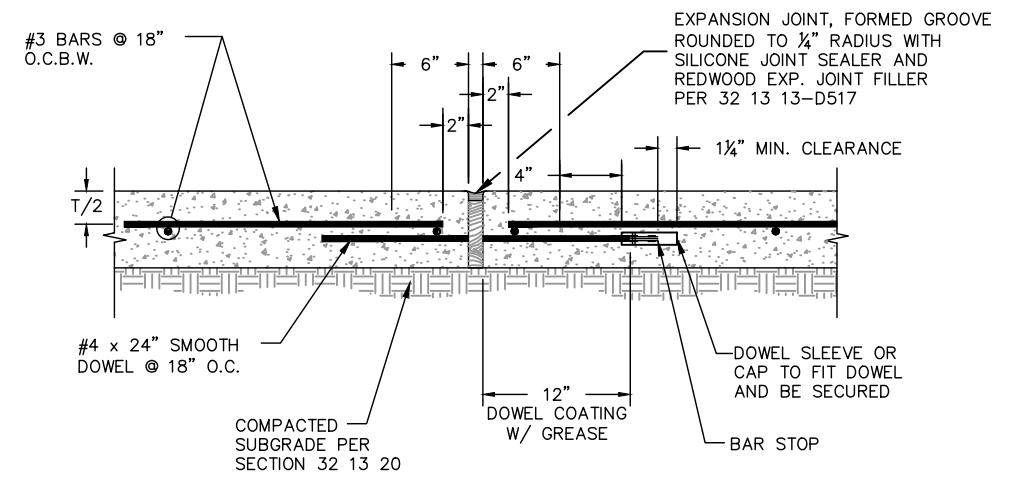
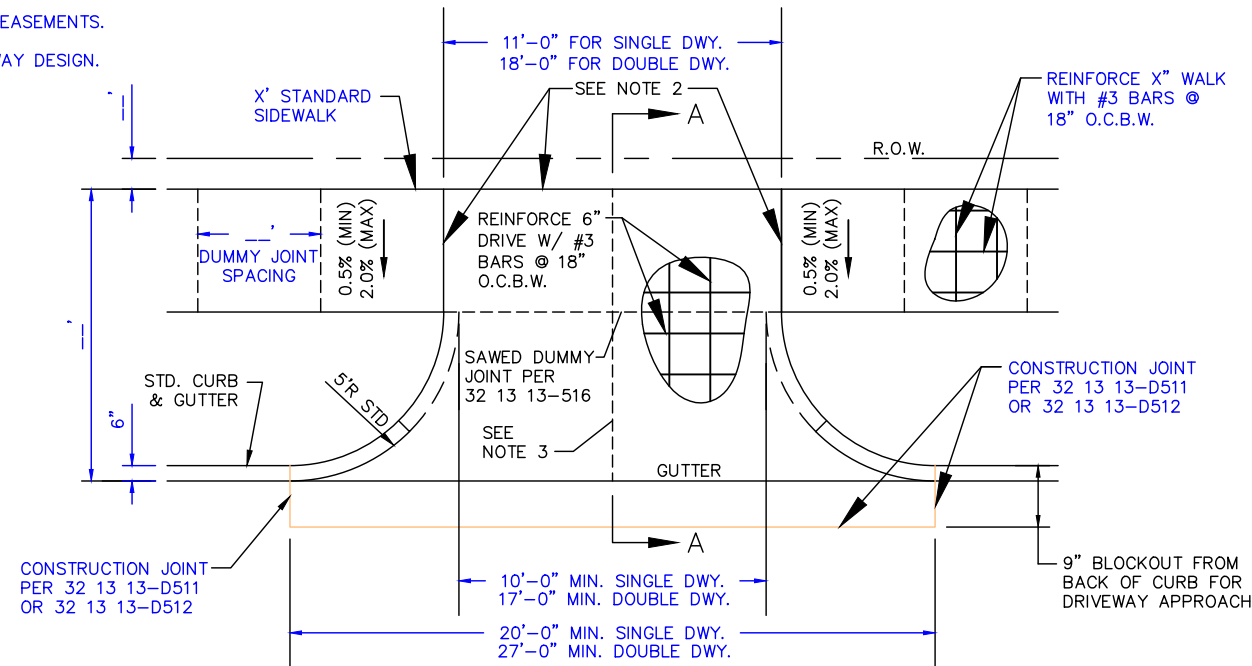


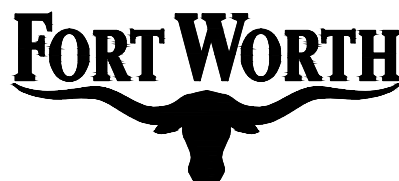
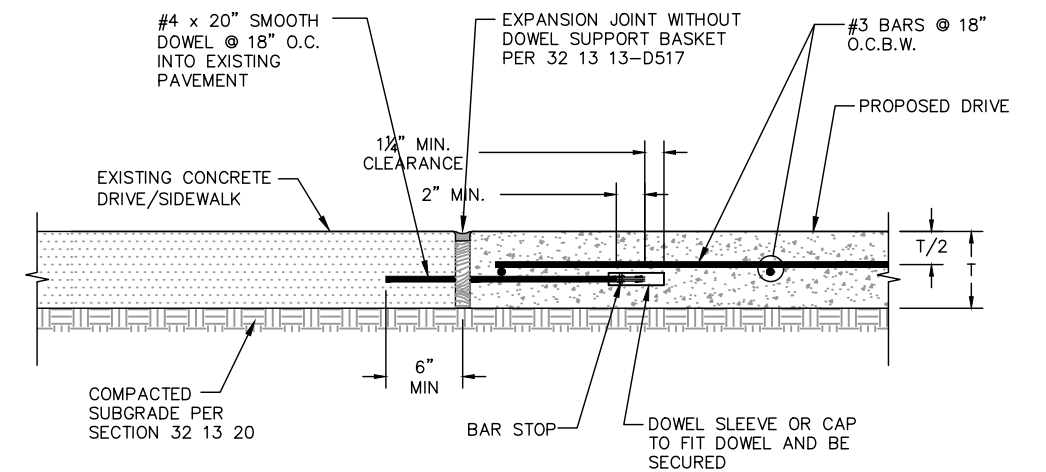
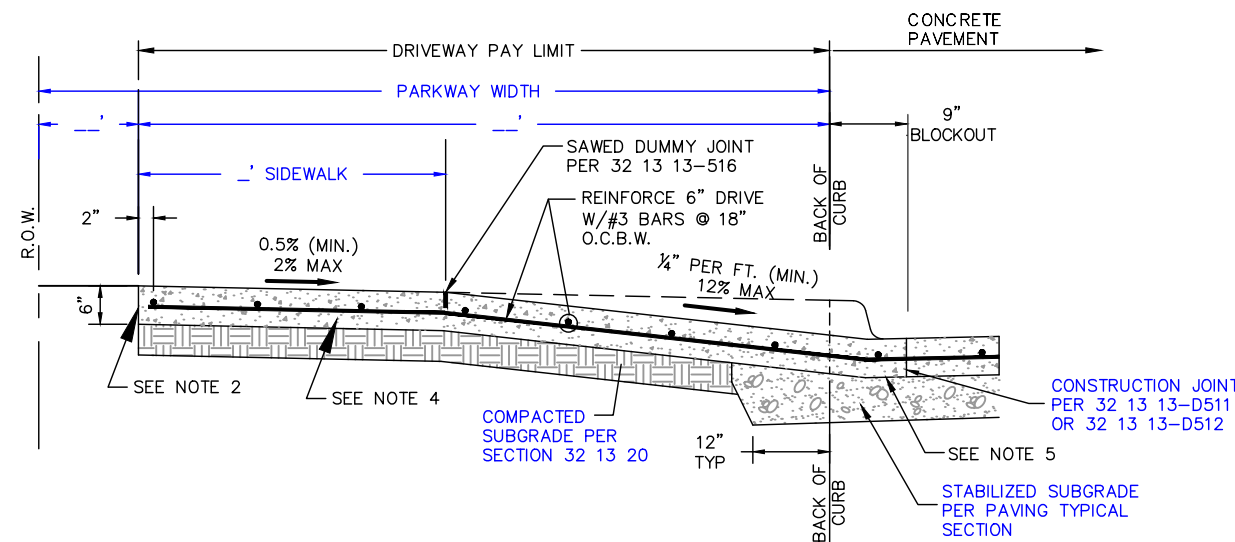
**NOTES TO DESIGNER:**

1. FILL IN BLANKS AND/ OR VERIFY ALL TEXT IN BLUE.
2. SET GRADES TO CONVEY STORMWATER WITHIN R.O.W. OR EASEMENTS.
3. REVISE DETAIL AS NECESSARY TO MATCH ACTUAL ROADWAY DESIGN.
4. MODIFY DETAIL TO MEET SPECIFIC CONDITIONS.
5. DUMMY JOINT SPACING SAME AS SIDEWALK WIDTH.



**DRIVEWAY NOTES:**

1. DRIVEWAY PAY LIMIT WILL BE MEASURED FROM BACK OF THE PROJECTED CURB, INCLUDING THE AREA OF THE CURB RADIUS AND WILL EXTEND TO THE LIMITS SPECIFIED IN THE DRAWINGS.
2. INSTALL EXPANSION JOINT (SEE DETAIL - THIS SHEET) WHERE DRIVEWAY CONNECTS TO SIDEWALK. PLACE EXPANSION JOINT FOR CONNECTION TO EXIST DRIVE AT BACK OF SIDEWALK. IF DRIVE CONSTRUCTION EXTENDS BEYOND ROW, PLACE EXPANSION JOINT AT BACK OF SIDEWALK THEN PLACE CONSTRUCTION JOINT PER 32 13 13-D512 AT CONNECTION WITH EXISTING DRIVE.
3. DUMMY JOINT IN DRIVEWAY RAMP IS OPTIONAL IN 11'-0" DRIVEWAY ONLY. DUMMY JOINT(S) IN DRIVE REQUIRED TO CORRESPOND WITH JOINT(S) IN CONCRETE PAVING.
4. SIDEWALK SECTION THRU DRIVEWAY TO BE POURED SAME THICKNESS AS DRIVEWAY APPROACH, AND PAID FOR AS DRIVEWAY APPROACH. EXISTING SIDEWALK, IF ANY, SHALL BE REMOVED AND REPLACED.
5. MATCH CONCRETE PAVING THICKNESS FROM BACK OF CURB TO CONSTRUCTION JOINT TIE IN TO CONCRETE PAVING.
6. THE GRADE BREAK AT THE GUTTER LINE AND AT ANY POINT WITHIN 10 FEET OF GUTTER LINE MUST NOT EXCEED 12 PERCENT.
7. ALL CONCRETE SHALL BE CLASS "A" PER SECTION 32 13 20.



CITY OF FORT WORTH, TEXAS  
**CONCRETE RESIDENTIAL  
 DRIVEWAY APPROACH WITH  
 RADIUS - CONCRETE PAVING**

REVISED: 03-16-2018

**32 13 20-D527**