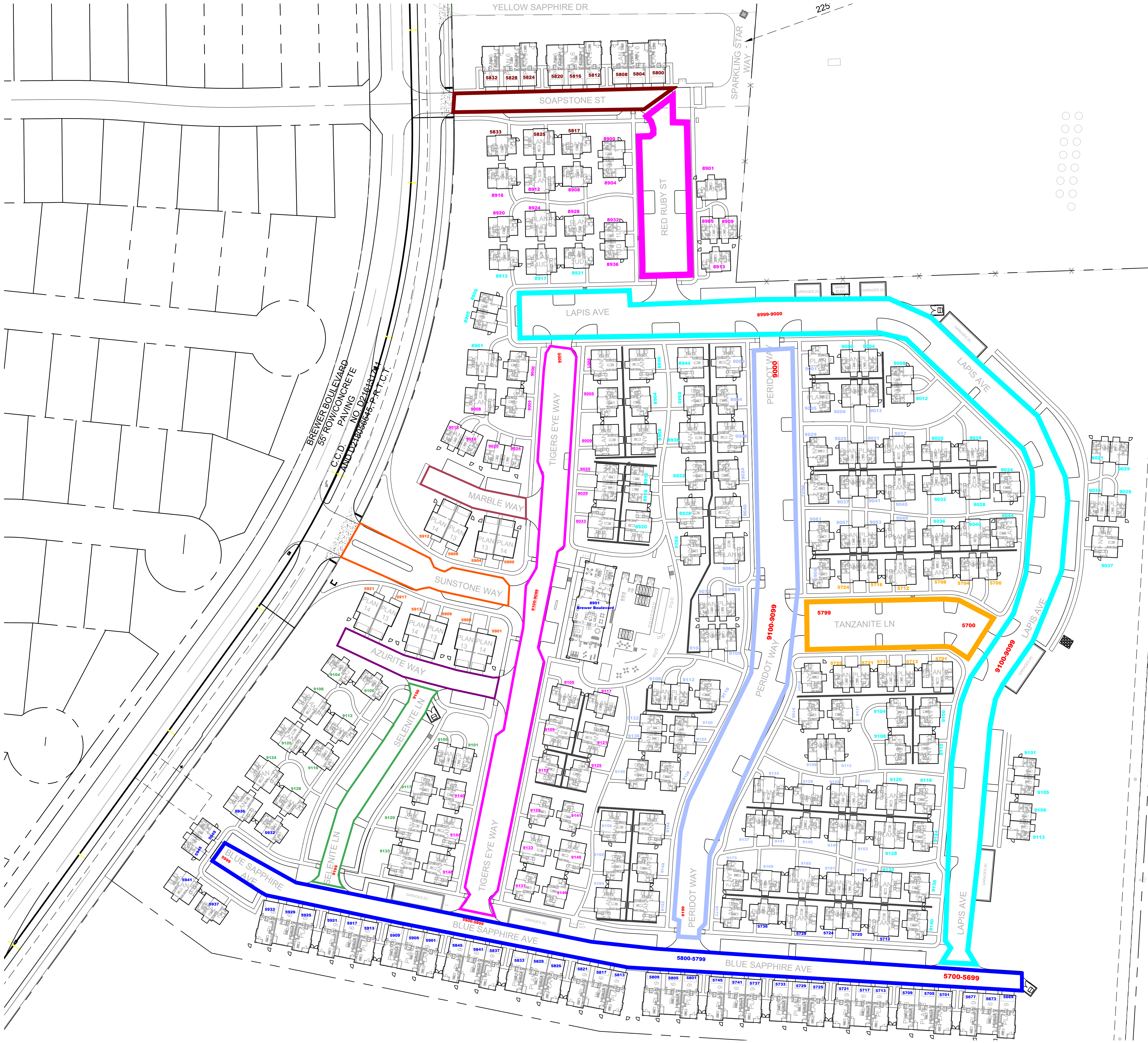




SP-22-1114

REFER TO FP-22-099
D222262499
11/02/2022
CFWLAND_ID 1437191

CHISHOLM TRAIL PARKWAY
(VARIABLE WIDTH
RIGHT-OF-WAY)
CONCRETE PAVING
NORTH TEXAS TOLLWAY
AUTHORITY
C.C.D. NO. D212119258
D.R.T.C.T.



YELLOW SAPPHIRE DR

225

SPARKLING STAR WAY

SOAPSTONE ST

RED RUBY ST

LAPIS AVE

MARBLE WAY

SUNSTONE WAY

AZURITE WAY

SELENITE LN

BLUE SAPPHIRE AVE

BLUE SAPPHIRE AVE

BLUE SAPPHIRE AVE

5700-5699

5800-5799

5900-5899

9100-9099

9200-9199

9300-9299

9400-9399

9500-9499

9600-9599

9700-9699

9800-9799

9900-9899

9000-9999

BREWER BOULEVARD
55' ROW/CONCRETE
PAVING
NO. D21615174
AND D21615174
D.R.T.C.T.

C.C.D.

NORTH TEXAS TOLLWAY
AUTHORITY

NO. D212119258
D.R.T.C.T.

CHISHOLM TRAIL PARKWAY

(VARIABLE WIDTH

RIGHT-OF-WAY)

CONCRETE PAVING

NORTH TEXAS TOLLWAY

AUTHORITY

NO. D212119258

D.R.T.C.T.