

Vicinity Map
N.T.S.

- Legend
- IRS - Iron Rod Set
 - B.L. - Building Line
 - RP - Radius Point
 - R - Radius
 - P.D.E. - Public Drainage Easement
 - B.T.P. - By This Plat
 - W.M.E. - Wall Maintenance Easement
 - C.R.T.C.T. - County Records, Tarrant County, Texas
- Land Use Table
- | | |
|--------------|---------------------|
| Residential | 36.307 Acres |
| Open Space | 29.598 Acres |
| Right-of-Way | 16.592 Acres |
| Total | 82.497 Acres |

Lot Tabulation

Block 1	33 Lots (2 Open Spaces)
Block 2	19 Lots
Block 3	31 Lots
Block 4	26 Lots
Block 5	21 Lots (1 Open Space)
Block 6	10 Lots (5 Open Spaces)
Block 7	24 Lots (1 Open Space)
Block 8	19 Lots (1 Open Space)
Block 9	11 Lots
Block 10	8 Lots (3 Open Spaces)
Block 11	44 Lots (4 Open Spaces)
Block 12	5 Lots
Total	251 Lots

LINE TABLE

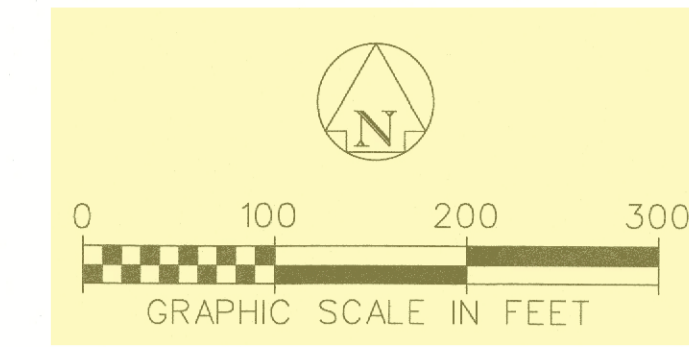
NO.	BEARING	DIST.
L1	N37°18'22"E	14.14'
L4	N52°43'34"W	14.14'
L6	N37°18'26"E	14.14'
L7	N52°43'34"W	14.14'
L18	N52°43'34"W	14.14'
L19	N37°18'26"E	14.14'
L20	S72°45'59"W	14.38'
L21	N15°21'14"W	14.38'
L22	N44°24'22"E	14.14'
L23	S45°35'38"E	14.14'
L24	N44°24'22"E	14.14'
L25	S45°35'38"E	14.14'
L26	N48°08'41"W	14.57'
L27	S47°03'59"W	14.42'
L28	N37°18'26"E	14.14'

CURVE TABLE

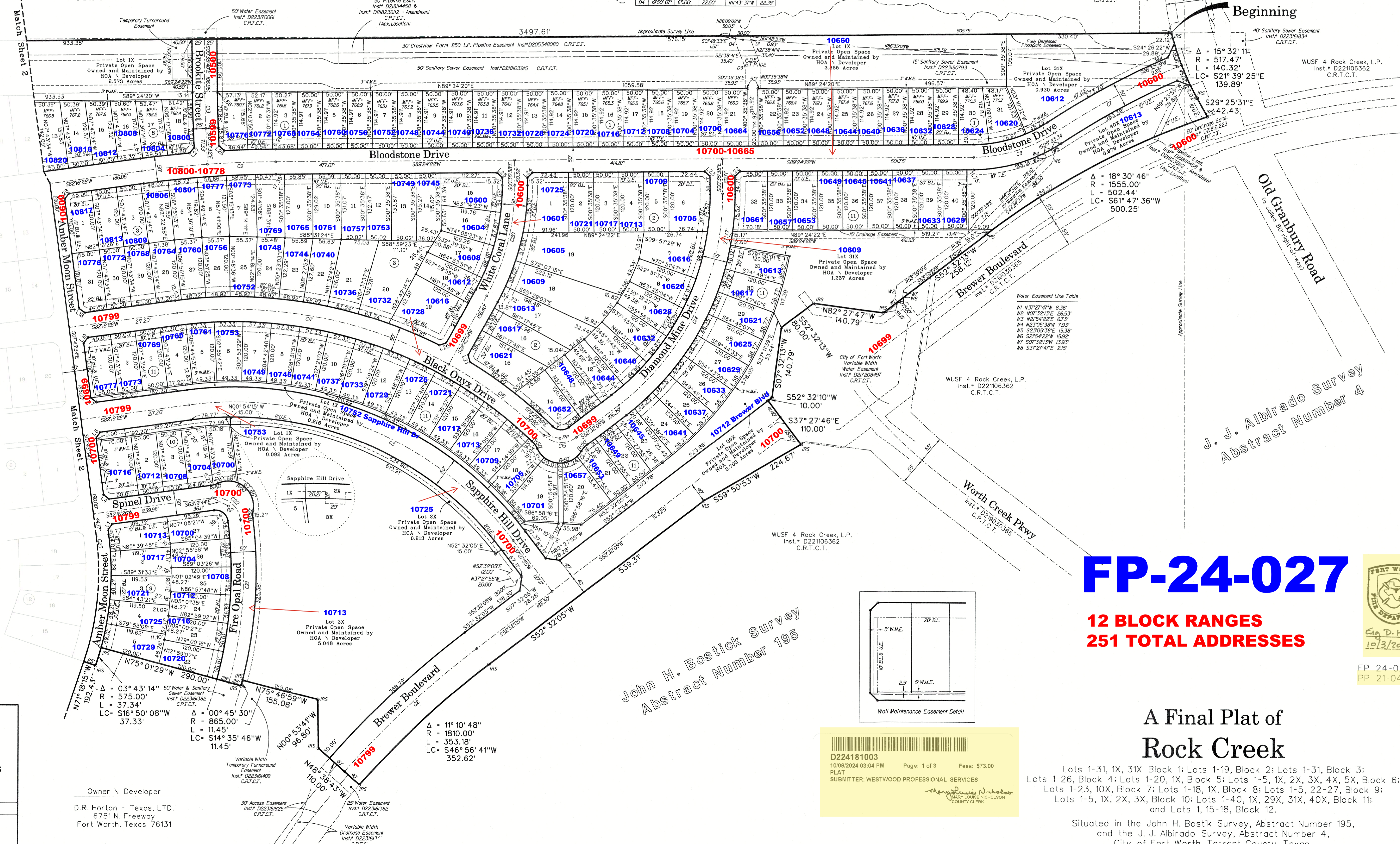
NO.	DELTA	RADIUS	LENGTH	BEARING	DIST.
C2	11°10'48"	1850.00'	360.99'	S46°56'41"W	360.41'
C3	50°15'39"	700.00'	738.23'	N67°35'45"W	702.78'
C7	09°44'20"	1640.00'	278.76'	S61°38'00"W	278.42'
C8	32°38'33"	300.00'	170.92'	S73°05'06"W	168.61'
C9	03°38'40"	2150.00'	136.76'	S87°35'02"W	136.74'
C10	03°29'16"	2150.00'	130.88'	S88°01'04"W	130.88'
C13	02°15'52"	1800.00'	71.14'	S01°43'36"E	71.14'
C14	53°07'43"	525.00'	486.82'	S25°58'14"W	469.56'
C15	81°31'10"	50.00'	71.14'	N86°42'20"W	65.29'
C16	15°20'44"	885.00'	237.03'	N53°37'07"W	236.32'
C17	36°26'05"	885.00'	562.78'	N79°30'32"W	553.34'
C20	29°17'52"	450.00'	230.10'	S14°03'18"W	227.60'
C21	22°19'19"	840.00'	327.26'	N03°48'51"E	325.19'
C22	80°22'48"	50.00'	78.87'	N52°32'11"W	70.94'
C25	26°25'19"	550.00'	253.63'	S05°29'05"W	251.39'

D.E. CURVE TABLE

NO.	DELTA	RADIUS	LENGTH	BEARING	DIST.
D1	19°50'01"	3500'	1212'	S143°37"E	1206'
D2	21°03'03"	6500'	2288'	S107°09"E	2379'
D3	20°23'03"	3500'	1212'	N07°02"W	1229'
D4	19°50'01"	6500'	2288'	N143°37"W	2239'



John H. Bostick Survey
Abstract Number 194



FP-24-027

12 BLOCK RANGES
251 TOTAL ADDRESSES



FP 24-027
PP 21-044

A Final Plat of
Rock Creek

Lots 1-31, 1X, 31X Block 1; Lots 1-19, Block 2; Lots 1-31, Block 3;
Lots 1-26, Block 4; Lots 1-20, 1X, Block 5; Lots 1-5, 1X, 2X, 3X, 4X, 5X, Block 6;
Lots 1-23, 10X, Block 7; Lots 1-18, 1X, Block 8; Lots 1-5, 22-27, Block 9;
Lots 1-5, 1X, 2X, 3X, Block 10; Lots 1-40, 1X, 29X, 31X, 40X, Block 11;
and Lots 1, 15-18, Block 12.

Situated in the John H. Bostick Survey, Abstract Number 195,
and the J. J. Albrado Survey, Abstract Number 4,
City of Fort Worth, Tarrant County, Texas.

Date of Preparation: September 2021

Phase 1

FORT WORTH
CITY PLAN COMMISSION
CITY OF FORT WORTH, TEXAS

THIS PLAT IS VALID ONLY IF RECORDED WITHIN
NINETY (90) DAYS AFTER DATE OF APPROVAL.

Plat Approval Date: 10-3-24

By: Amalal K. Baran Chairman
By: Joseph R. Hill Secretary

Owner \ Developer
D.R. Horton - Texas, LTD.
6751 N. Freeway
Fort Worth, Texas 76131

THIS DOCUMENT IS FILED IN INSTRUMENT NUMBER: D224181003 DATE: 10/09/2024

D224181003
10/09/2024 03:04 PM Page: 1 of 3 Fees: \$73.00
PLAT
SUBMITTER: WESTWOOD PROFESSIONAL SERVICES

Revisions:

Job #:	DRH19012
Drawn By:	D. Freeman
Checked By:	T. Bridges
Date:	09-13-21

PELOTON
LAND SOLUTIONS
8800 HILLWOOD PARKWAY, SUITE 250
FORT WORTH, TEXAS 76117 PH.# 817-562-3350

SHEET
1
OF 2 SHEETS

3:09:30 PM 9/30/2024 \$MODEL NAME\$ G:\JOB\DRH19012_Rock_Creek_E.Master.Dev\Survey\DRH19012_PAI.dgn

