

VICINITY MAP NOT TO SCALE

LAND USE TABLE with columns for Gross Site Area, Net Site Area, Row Dedication, and Lot Use Type.

Table listing utility providers for Electric Service, Water Source, and Sewer Source.

\* LEGEND \* table defining symbols for IRF, IRS, (CM), XF, WER, D.R.T.C.T., P.R.T.C.T., O.P.R.T.C.T., L1, C1, and Unnamed 26' Emergency Access Fire Lane Easement.



FINAL PLAT OF WELLINGTON LOTS 1 AND 2, BLOCK A A 47.897 ACRE ADDITION TO THE CITY OF FORT WORTH, TARRANT COUNTY, TEXAS

OWNER / DEVELOPER GS PARKS WELLINGTON VENTURE, LLC 600 EAST LAS COLINAS BLVD., SUITE 2100 IRVING, TEXAS 75039

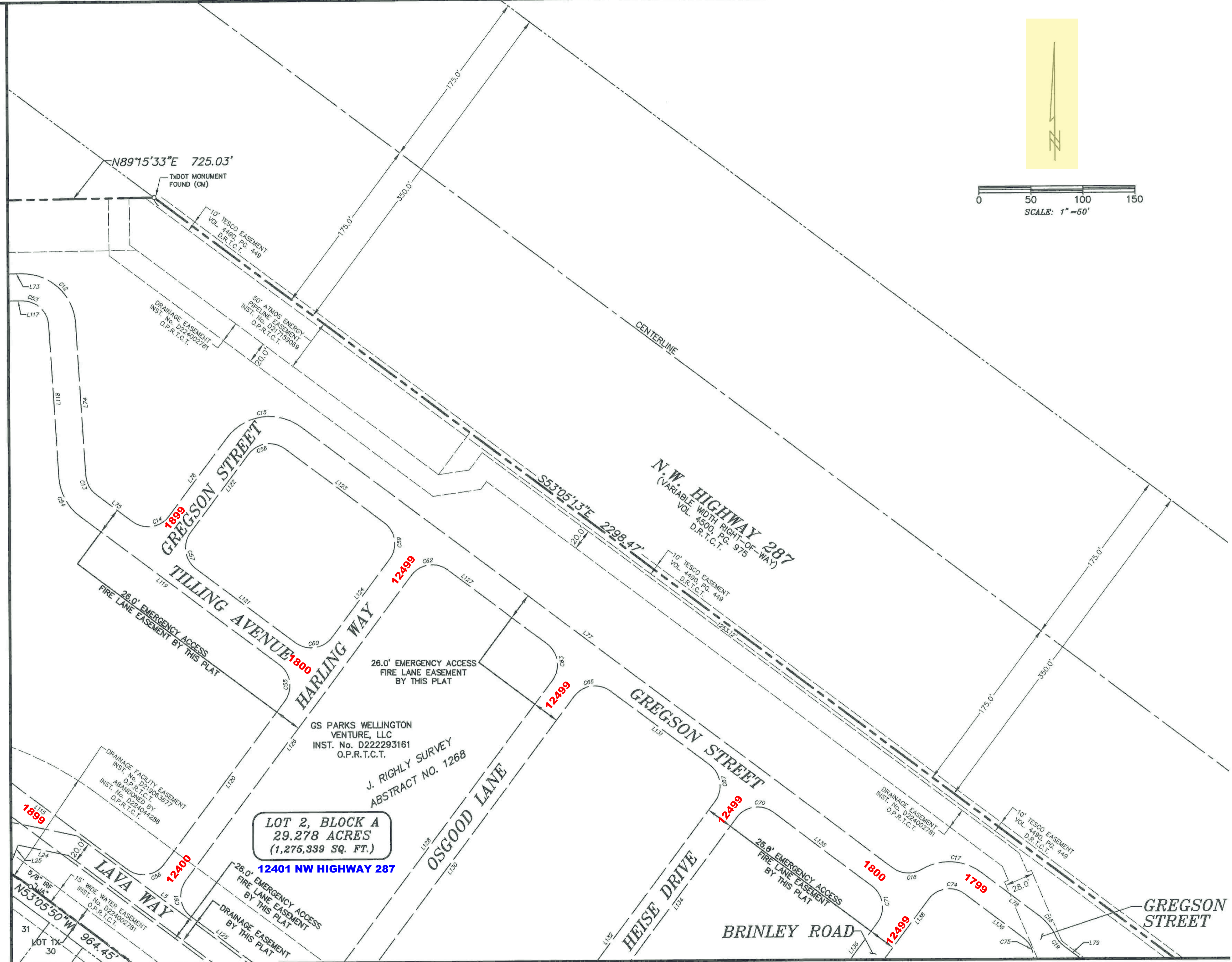
ENGINEER / SURVEYOR WIER & ASSOCIATES, INC. 2201 E. LAMAR BLVD., SUITE 200E ARLINGTON, TEXAS 76006

FP-23-157 2 Addresses 26 Block Ranges

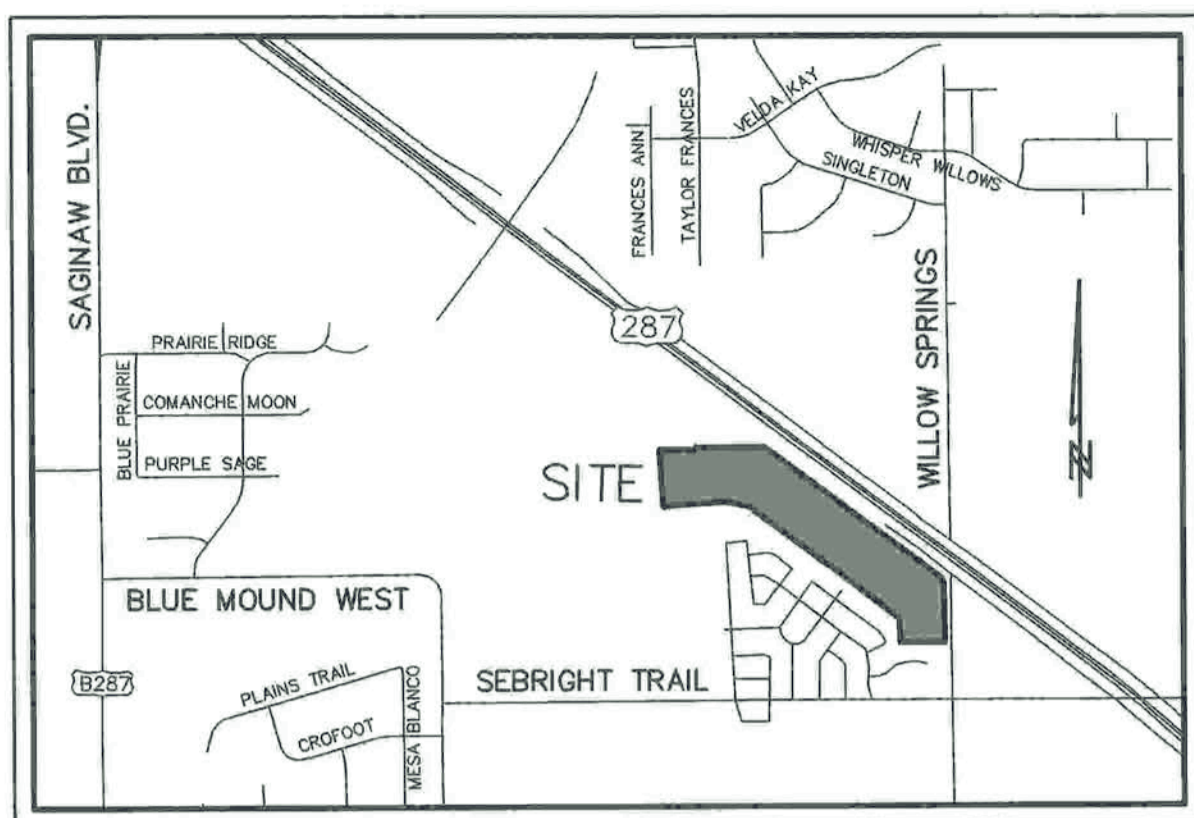
WIA WIER & ASSOCIATES, INC. ENGINEERS SURVEYORS LAND PLANNERS 2201 E. LAMAR BLVD., SUITE 200E ARLINGTON, TEXAS 76006

PRINTED: 4/9/2024 STB FILE: WIER-SURVEY.STB LAST SAVED: 4/9/2024 2:38 PM SAVED BY: RYANS FILE: FINAL-PLAT-22035.DWG

MATCH LINE - SEE SHEET 1

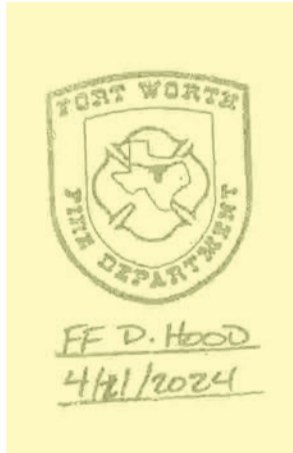


MATCH LINE - SEE SHEET 3



**\* LEGEND \***

IRF	IRON ROD FOUND
IRS	IRON ROD SET
(CM)	CONTROLLING MONUMENT
XF	"X"-CUT FOUND
"WIER"	WIER & ASSOC INC
D.R.T.C.T.	DEED RECORDS, TARRANT COUNTY, TEXAS
P.R.T.C.T.	PLAT RECORDS, TARRANT COUNTY, TEXAS
O.P.R.T.C.T.	OFFICIAL PUBLIC RECORDS, TARRANT COUNTY, TEXAS
L1	LINE IDENTIFIED IN LINE TABLE
C1	CURVE IDENTIFIED IN CURVE TABLE
✱	UNNAMED 26' EMERGENCY ACCESS FIRE LANE EASEMENT



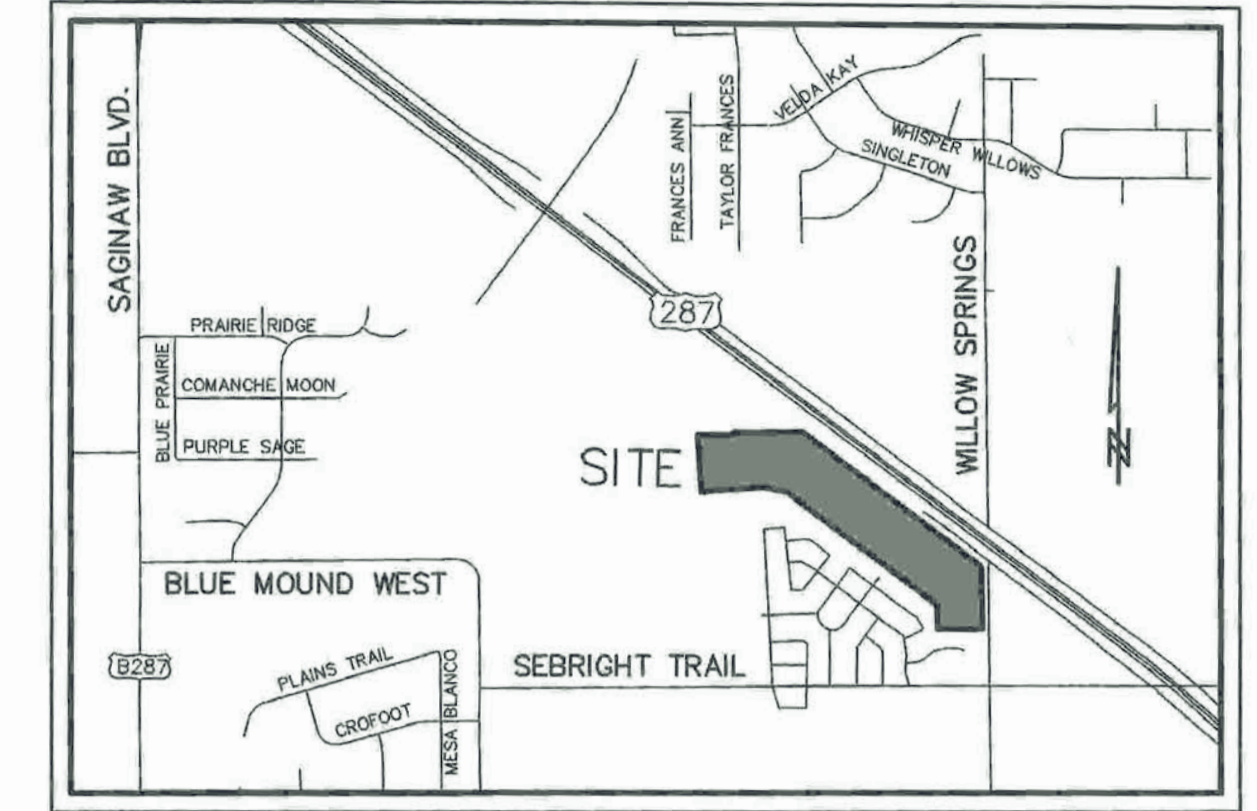
**FINAL PLAT OF WELLINGTON LOTS 1 AND 2, BLOCK A**  
 A 47.897 ACRE ADDITION TO THE CITY OF FORT WORTH, TARRANT COUNTY, TEXAS  
 SITUATED IN THE J. RIGHLI SURVEY, ABSTRACT No. 1268, TARRANT COUNTY, TEXAS  
 TWO MULTI-FAMILY LOTS  
 CASE NUMBER: FP-23-157

**OWNER / DEVELOPER**  
 GS PARKS WELLINGTON VENTURE, LLC  
 600 EAST LAS COLINAS BLVD., SUITE 2100  
 IRVING, TEXAS 75039  
 CONTACT: JR THULIN  
 PH: (214) 451-5698

**ENGINEER / SURVEYOR**  
 WIER & ASSOCIATES, INC.  
 2201 E. LAMAR BLVD., SUITE 200E  
 ARLINGTON, TEXAS 76006  
 CONTACT: RANDY EARDLEY, P.E.  
 PH: (817) 467-7700  
 FAX: (817) 467-7713

PREPARED BY:  
**WIA WIER & ASSOCIATES, INC.**  
 ENGINEERS SURVEYORS LAND PLANNERS  
 2201 E. LAMAR BLVD., SUITE 200E ARLINGTON, TEXAS 76006 METRO (817) 467-7700  
 Texas Firm Registration No. F-2716 www.WierAssociates.com  
 Texas Board of Professional Land Surveying Registration No. 10033900

MATCH LINE - SEE SHEET 2

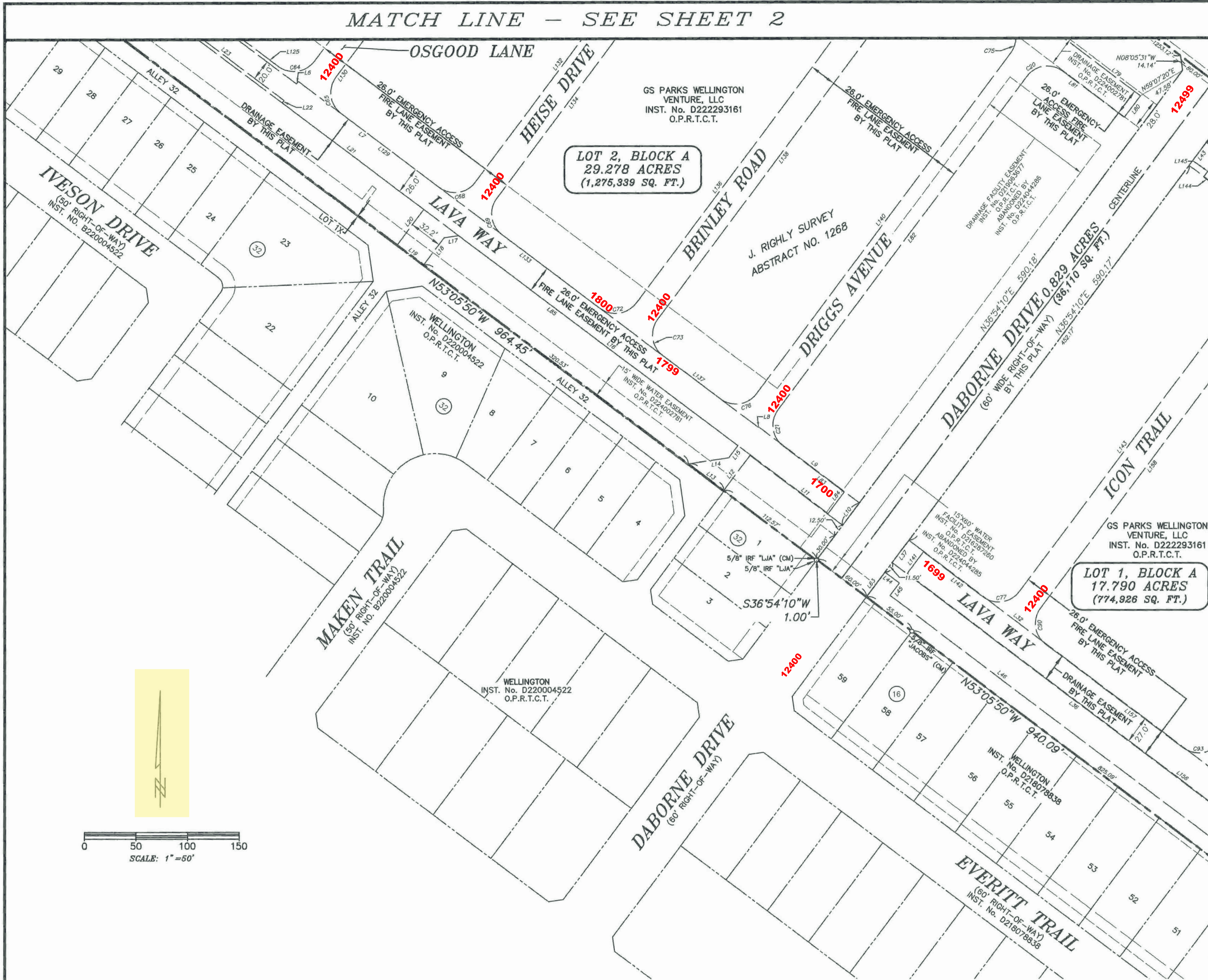


VICINITY MAP  
NOT TO SCALE

MATCH LINE - SEE SHEET 4

PRINTED: 4/9/2024 STB FILE: WIER-SURVEY-STB LAST SAVED: 4/9/2024 2:38 PM SAVED BY: RYANS FILE: FINAL-PLAT--22035.DWG

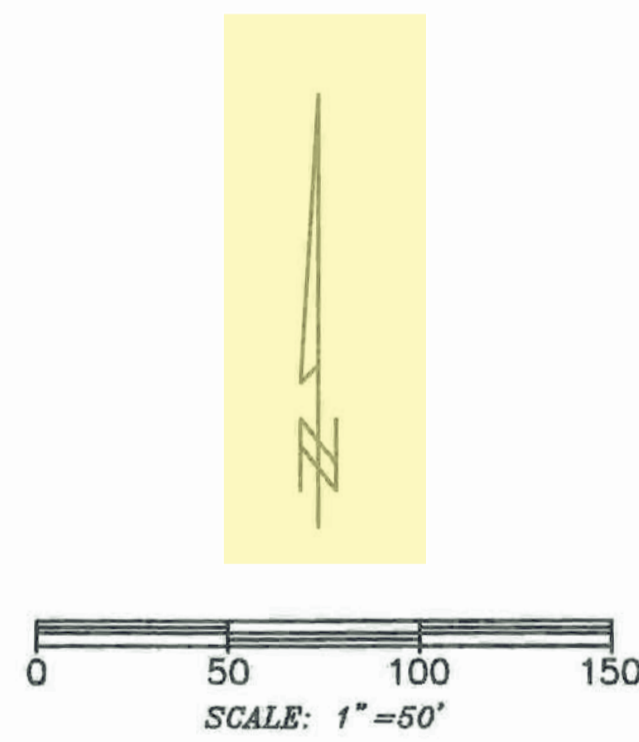
SCALE: 1"=50'



LOT 2, BLOCK A  
29.278 ACRES  
(1,275,339 SQ. FT.)

LOT 1, BLOCK A  
17.790 ACRES  
(774,928 SQ. FT.)

* LEGEND *	
IRF	IRON ROD FOUND
IRS	IRON ROD SET
(CM)	CONTROLLING MONUMENT
XF	"X"-CUT FOUND
"WIER"	WIER & ASSOC INC
D.R.T.C.T.	DEED RECORDS, TARRANT COUNTY, TEXAS
P.R.T.C.T.	PLAT RECORDS, TARRANT COUNTY, TEXAS
O.P.R.T.C.T.	OFFICIAL PUBLIC RECORDS, TARRANT COUNTY, TEXAS
L1	LINE IDENTIFIED IN LINE TABLE
C1	CURVE IDENTIFIED IN CURVE TABLE
* (Star symbol)	UNNAMED 26' EMERGENCY ACCESS FIRE LANE EASEMENT



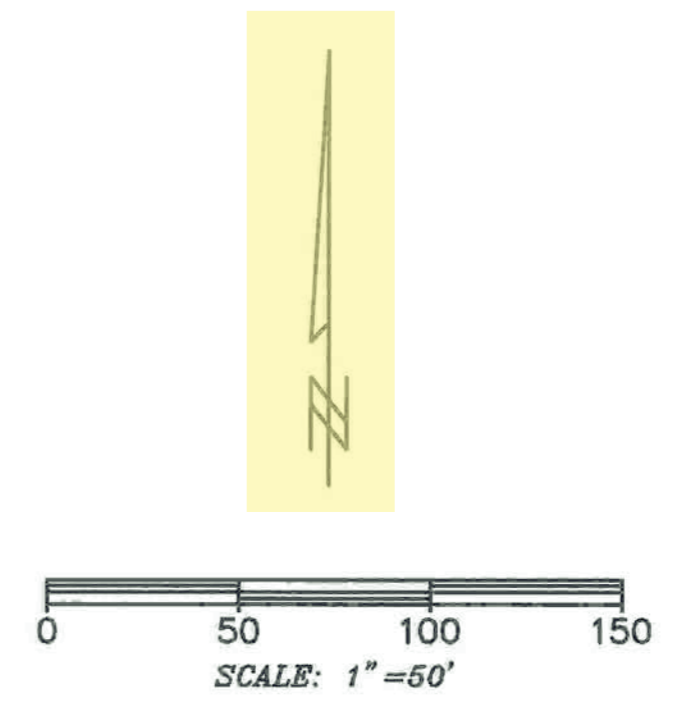
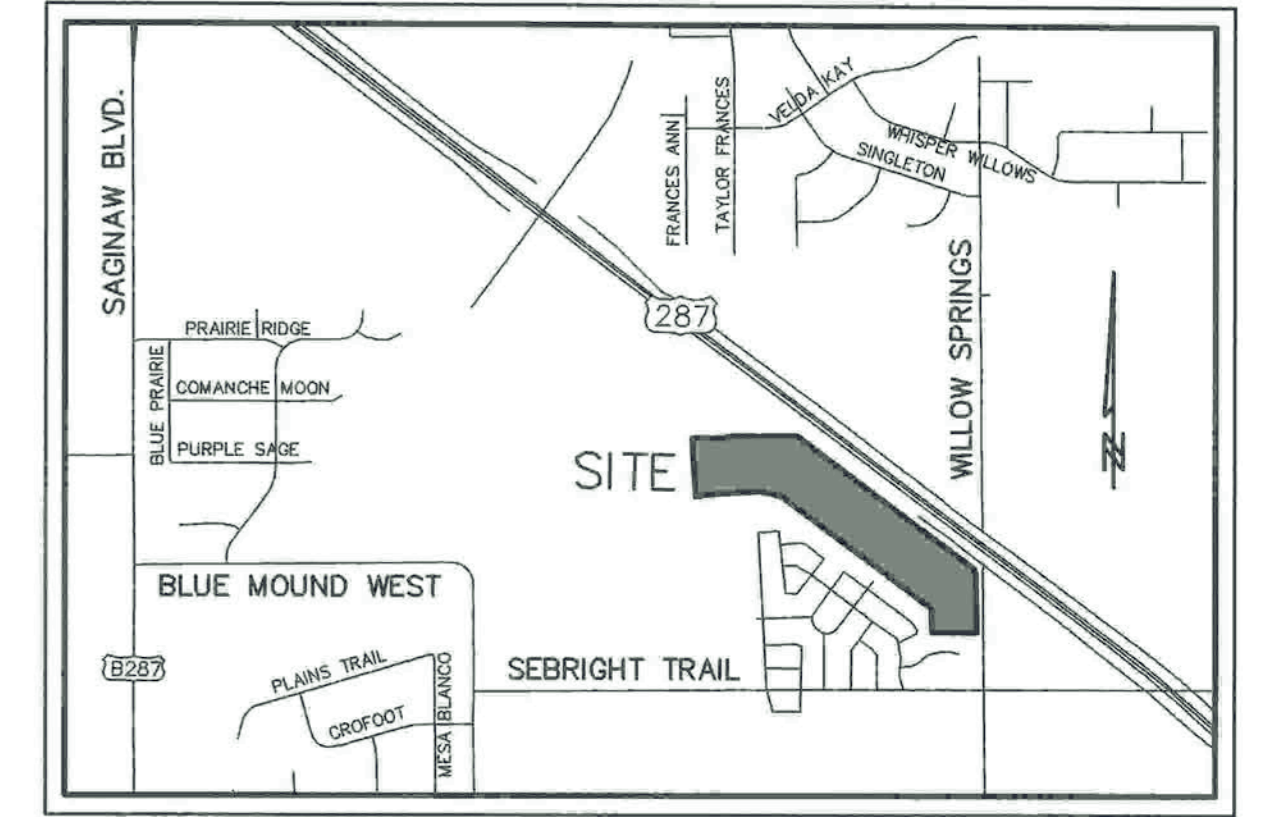
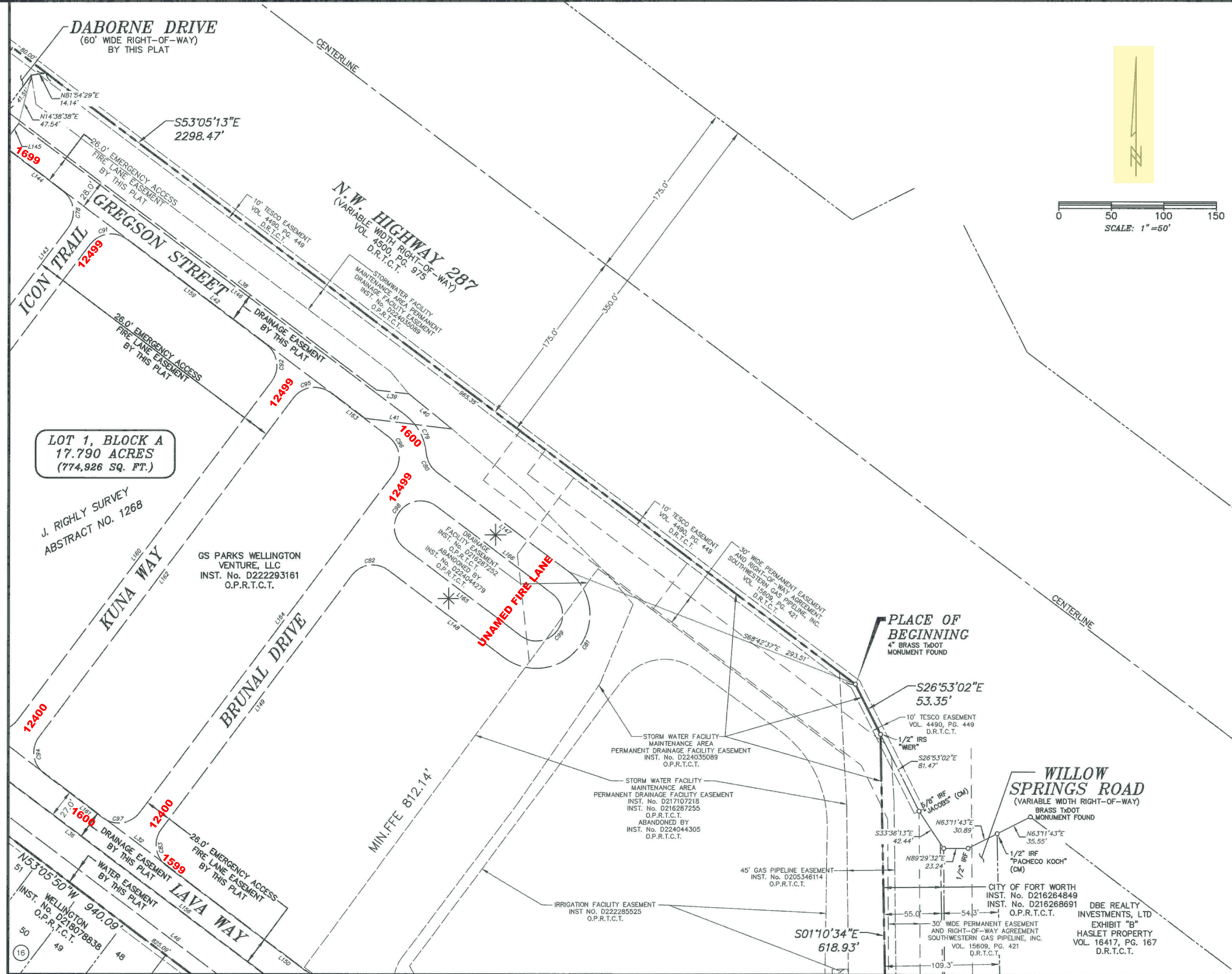
**FINAL PLAT OF WELLINGTON LOTS 1 AND 2, BLOCK A**  
A 47.897 ACRE ADDITION TO THE CITY OF FORT WORTH, TARRANT COUNTY, TEXAS  
SITUATED IN THE J. RIGHLI SURVEY, ABSTRACT No. 1268, TARRANT COUNTY, TEXAS  
TWO MULTI-FAMILY LOTS  
CASE NUMBER: FP-23-157

**OWNER / DEVELOPER**  
GS PARKS WELLINGTON VENTURE, LLC  
600 EAST LAS COLINAS BLVD., SUITE 2100  
IRVING, TEXAS 75039  
CONTACT: JR THULIN  
PH: (214) 451-5698

**ENGINEER / SURVEYOR**  
WIER & ASSOCIATES, INC.  
2201 E. LAMAR BLVD., SUITE 200E  
ARLINGTON, TEXAS 76006  
CONTACT: RANDY EARDLEY, P.E.  
PH: (817) 467-7700  
FAX: (817) 467-7713

PREPARED BY:  
**WIA WIER & ASSOCIATES, INC.**  
ENGINEERS SURVEYORS LAND PLANNERS  
2201 E. LAMAR BLVD., SUITE 200E ARLINGTON, TEXAS 76006 METRO (817) 467-7700  
Texas Firm Registration No. F-2776 www.WierAssociates.com  
Texas Board of Professional Land Surveying Registration No. 10033900

MATCH LINE - SEE SHEET 3



LOT 1, BLOCK A  
17.790 ACRES  
(774,926 SQ. FT.)

J. RIGLY SURVEY  
ABSTRACT NO. 1268

GS PARKS WELLINGTON  
VENTURE, LLC  
INST. No. D222293161  
O.P.R.T.C.T.

PLACE OF  
BEGINNING  
4" BRASS TxDOT  
MONUMENT FOUND

\* LEGEND \*

IRF	IRON ROD FOUND
IRS	IRON ROD SET
(CM)	CONTROLLING MONUMENT
XF	"X"-CUT FOUND
"WIER"	WIER & ASSOC INC
D.R.T.C.T.	DEED RECORDS, TARRANT COUNTY, TEXAS
P.R.T.C.T.	PLAT RECORDS, TARRANT COUNTY, TEXAS
O.P.R.T.C.T.	OFFICIAL PUBLIC RECORDS, TARRANT COUNTY, TEXAS
L1	LINE IDENTIFIED IN LINE TABLE
C1	CURVE IDENTIFIED IN CURVE TABLE
*	UNNAMED 26' EMERGENCY ACCESS FIRE LANE EASEMENT



MATCH LINE - SEE SHEET 5

**FINAL PLAT OF WELLINGTON  
LOTS 1 AND 2, BLOCK A**  
A 47.897 ACRE ADDITION TO THE CITY OF FORT WORTH,  
TARRANT COUNTY, TEXAS  
SITUATED IN THE J. RIGLY SURVEY,  
ABSTRACT No. 1268, TARRANT COUNTY, TEXAS  
TWO MULTI-FAMILY LOTS  
CASE NUMBER: FP-23-157

**OWNER / DEVELOPER**  
GS PARKS WELLINGTON VENTURE, LLC  
600 EAST LAS COLINAS BLVD., SUITE 2100  
IRVING, TEXAS 75039  
CONTACT: JR THULIN  
PH: (214) 451-5698

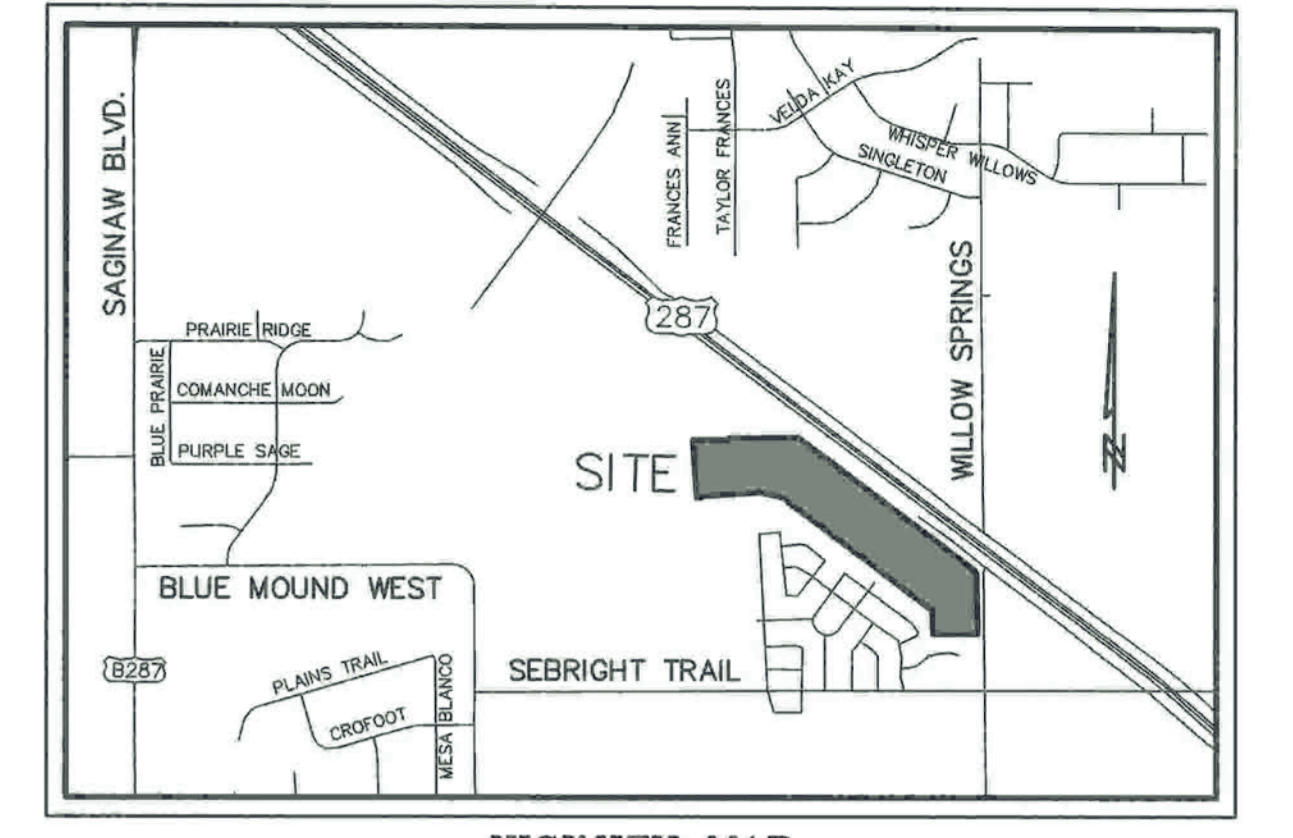
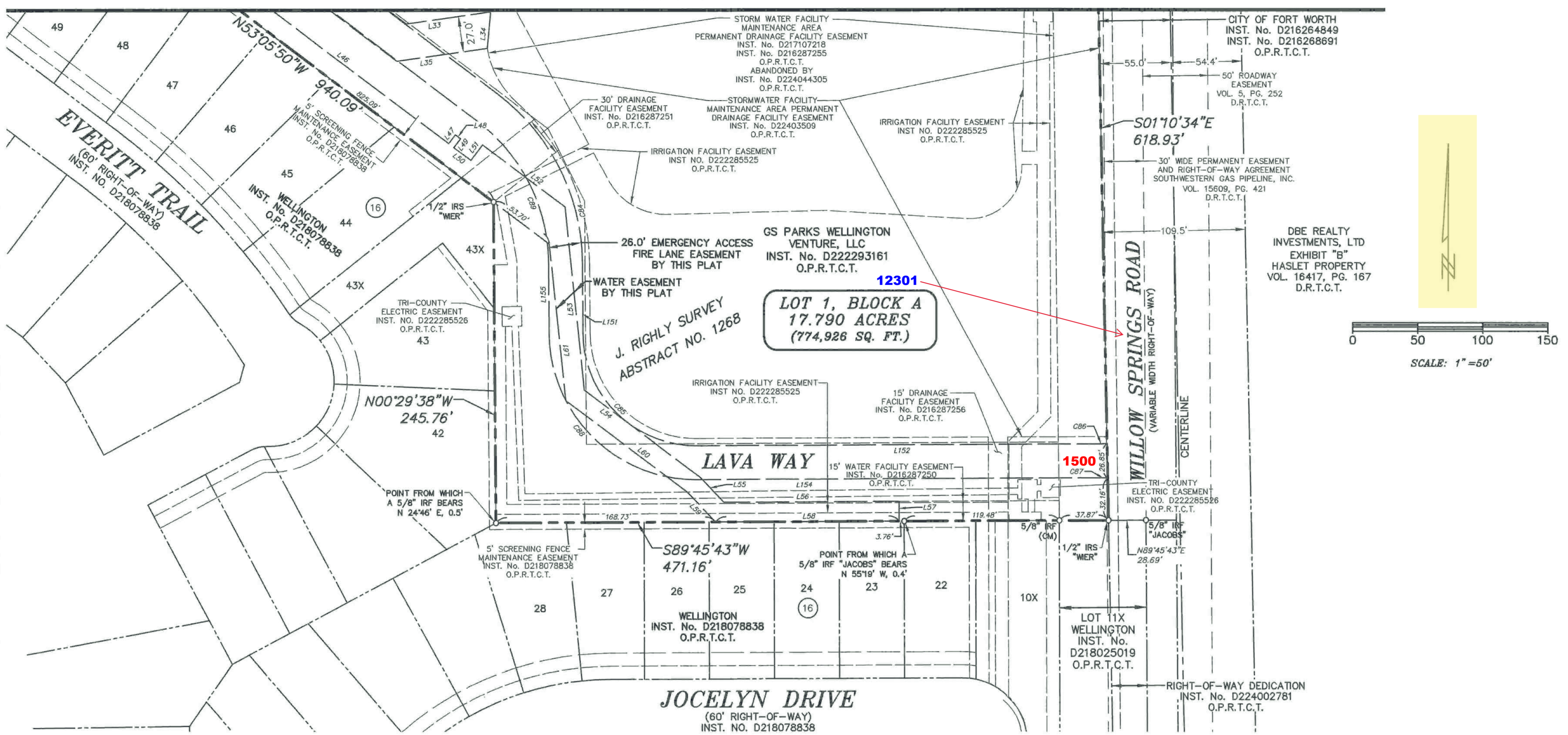
**ENGINEER / SURVEYOR**  
WIER & ASSOCIATES, INC.  
2201 E. LAMAR BLVD., SUITE 200E  
ARLINGTON, TEXAS 76006  
CONTACT: RANDY EARDLEY, P.E.  
PH: (817) 467-7700  
FAX: (817) 467-7713

PREPARED BY:  
**WIA WIER & ASSOCIATES, INC.**  
ENGINEERS SURVEYORS LAND PLANNERS  
2201 E. LAMAR BLVD., SUITE 200E ARLINGTON, TEXAS 76006 METRO (817) 467-7700  
Texas Firm Registration No. F-2776 www.WierAssociates.com  
Texas Board of Professional Land Surveying Registration No. 10033900

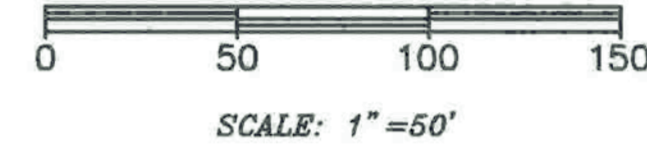
BAR IS ONE INCH ON ORIGINAL FULL-SIZE PRINT

PRINTED: 4/9/2024 2:38 PM STB FILE: WIER-SURVEY-STB LAST SAVED: 4/9/2024 2:38 PM SAVED BY: RYANS FILE: FINAL-PLAT-22035.DWG

MATCH LINE - SEE SHEET 4



LEGEND table defining symbols for IRF, IRS, (CM), XF, 'WIER', D.R.T.C.T., P.R.T.C.T., O.P.R.T.C.T., L1, C1, and UNNAMED 26' EMERGENCY ACCESS FIRE LANE EASEMENT.

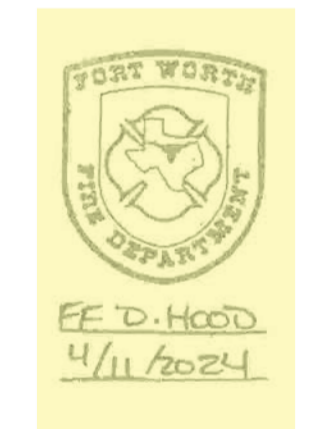


EASEMENT LINE TABLE with columns for LINE, BEARING, and DIST. Lists easements L1 through L166.

EASEMENT CURVE TABLE with columns for CURVE, ARC, RADIUS, DELTA, BEARING, and DIST. Lists curves C1 through C25.

EASEMENT CURVE TABLE with columns for CURVE, ARC, RADIUS, DELTA, BEARING, and DIST. Lists curves C26 through C99.

EASEMENT CURVE TABLE with columns for CURVE, ARC, RADIUS, DELTA, BEARING, and DIST. Lists curves C76 through C99.



FINAL PLAT OF WELLINGTON LOTS 1 AND 2, BLOCK A A 47.897 ACRE ADDITION TO THE CITY OF FORT WORTH, TARRANT COUNTY, TEXAS SITUATED IN THE J. RIGLY SURVEY, ABSTRACT No. 1268, TARRANT COUNTY, TEXAS TWO MULTI-FAMILY LOTS CASE NUMBER: FP-23-157

OWNER / DEVELOPER GS PARKS WELLINGTON VENTURE, LLC 600 EAST LAS COLINAS BLVD., SUITE 2100 IRVING, TEXAS 75039 CONTACT: JR THULIN PH: (214) 451-5698

ENGINEER / SURVEYOR WIER & ASSOCIATES, INC. 2201 E. LAMAR BLVD., SUITE 200E ARLINGTON, TEXAS 76006 CONTACT: RANDY EARDLEY, P.E. PH: (817) 467-7700 FAX: (817) 467-7713

WIER & ASSOCIATES, INC. ENGINEERS SURVEYORS LAND PLANNERS 2201 E. LAMAR BLVD., SUITE 200E ARLINGTON, TEXAS 76006 METRO (817) 467-7700 Texas Firm Registration No. F-2776 www.WierAssociates.com Texas Board of Professional Land Surveying Registration No. 10033900

