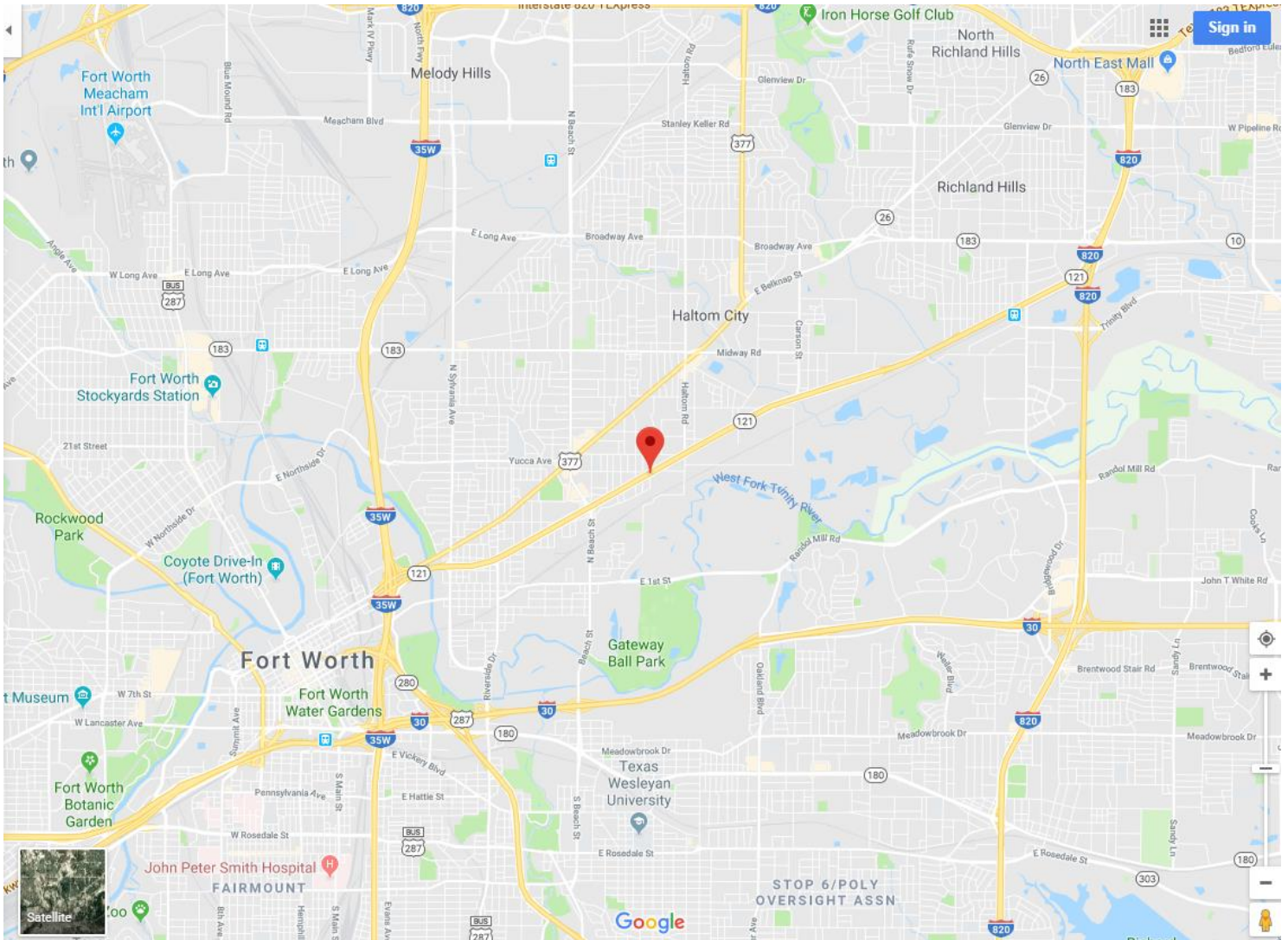


PROJECT NAME: SH121 PUBLIC ART AND LANDSCAPING PROJECT M & C Attachments

REGIONAL MAP

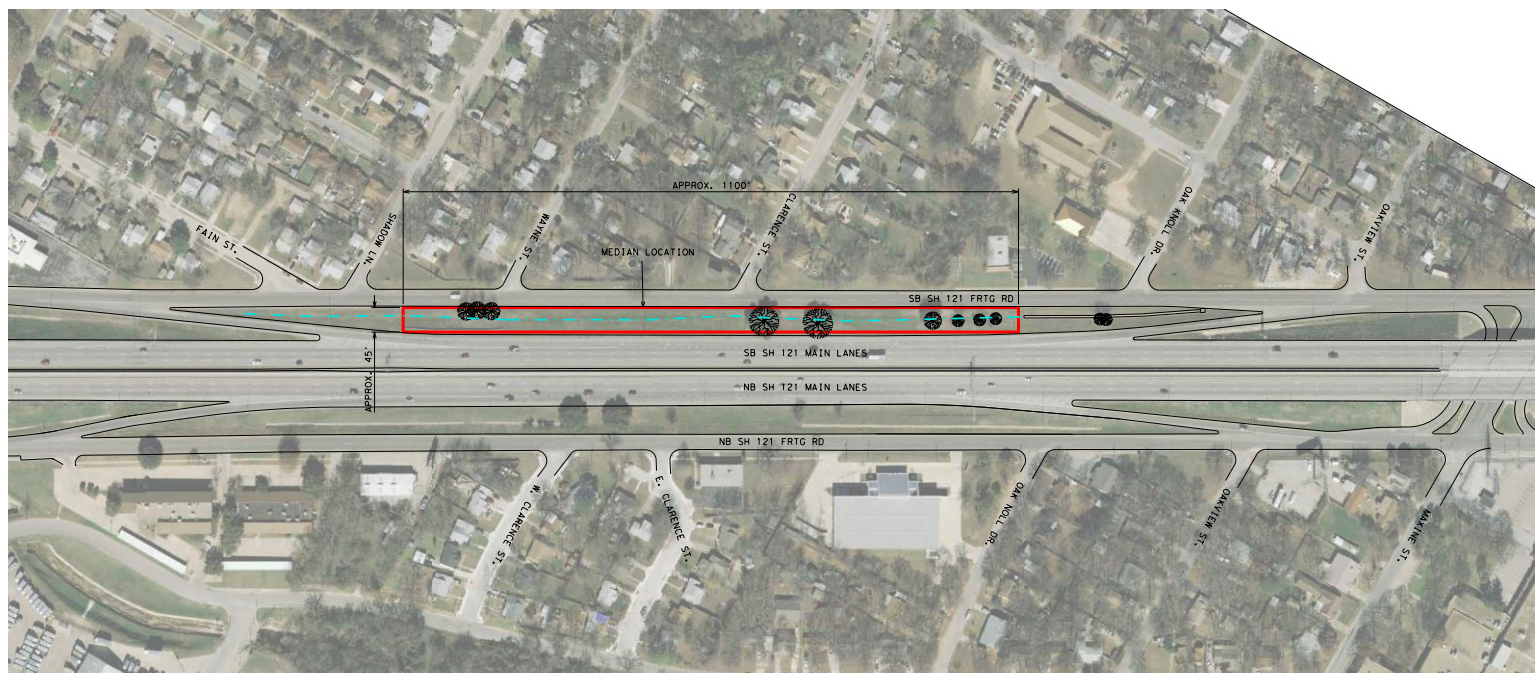
The site is located along westbound State Highway 121, west of Maxine Street and east of Beach Street.



PROJECT NAME: SH121 PUBLIC ART AND LANDSCAPING PROJECT M & C Attachments

SITE MAP

The site is on the north right-of-way median of westbound SH 121 (west of Maxine Street and east of Beach Street) and just inside the Fort Worth City limits. It offers dramatic views of the downtown Fort Worth skyline.



PROJECT NAME: SH121 PUBLIC ART AND LANDSCAPING PROJECT M & C Attachments

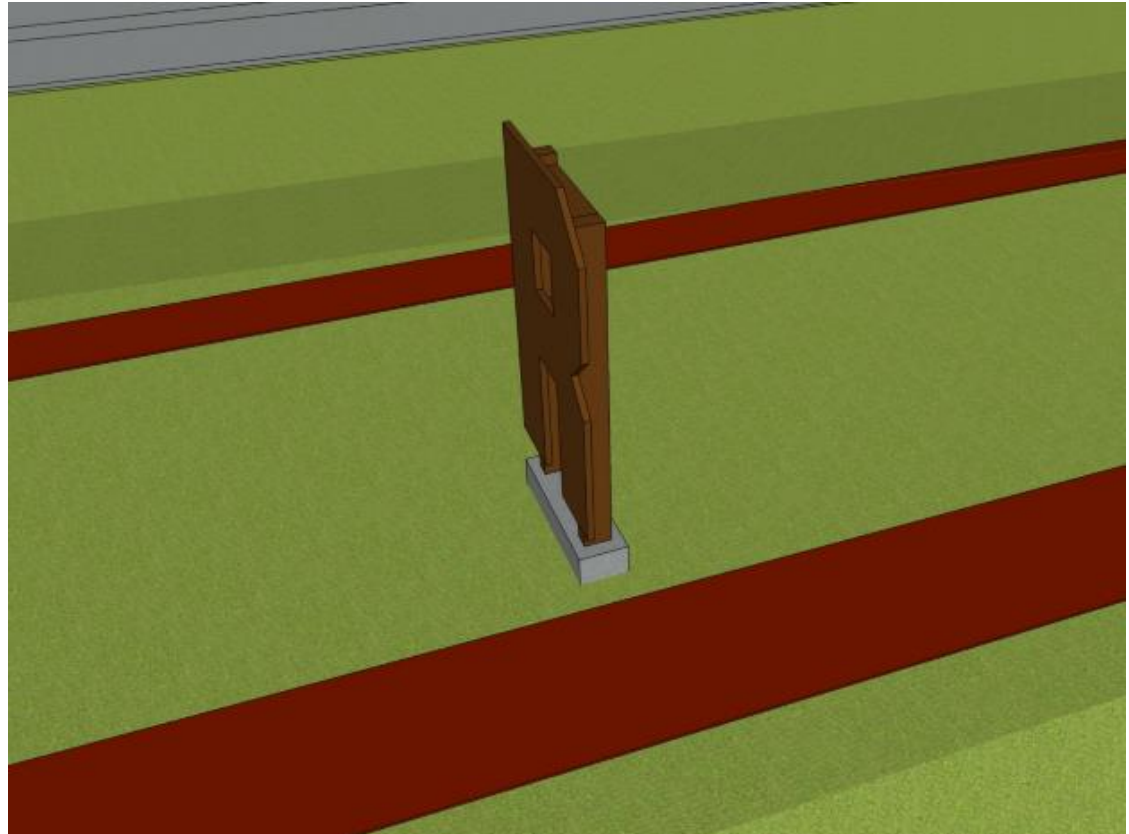
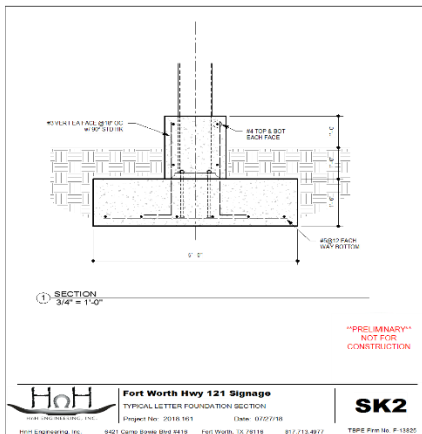
REVISED PRELIMINARY DESIGN

Corten steel letters, 10 feet in height, line up to spell out “Fort Worth” with Acme Brick in-ground pavers refers to the “Old Road to the West”, inter-planted with TxDOT native wildflower and grasses seed mixtures. The letters will be lit at night. *[Note: Artists’ Revised Preliminary Design rendering indicates a residential area north of the site in the background.]*



PROJECT NAME: SH121 PUBLIC ART AND LANDSCAPING PROJECT M & C Attachments

Oblique view from above of a Corten steel letter “R” (10’ in height) with concrete spread beam footing placed between bands of Acme Brick in-ground pavers. *[Note: Artist’s Preliminary Design rendering does not depict light fixtures that will illuminate the letters at night nor the native wildflowers and grasses that will be planted in between the brick pavers and letters.]*



PROJECT NAME: SH121 PUBLIC ART AND LANDSCAPING PROJECT M & C Attachments

Example of TxDOT native grasses seed mixture:

**'Van Horn' Green
sprangletop**
Leptochloa dubia



Drought tolerant perennial grass to 3' tall, provides quick ground cover and slower growth over time. Also provides nesting and cover for birds and small mammals.

Cold: to -13F
Soil: well drained
Light: full sun
Water: moderate to low



Sideoats grama
Bouteloua curtipendula



Texas State Grass, Perennial bunchgrass, to 2' high, and 1 1/2" wide. Blooms from April to October. Bluish green foliage dries to tan in fall. Rejuvenate by cutting after dried in fall.

Cold: to 0F
Soil: well drained
Light: full sun
Water: moderate to low



**Atascosa Texas
grama**
Bouteloua rigidisetia
Steud.



Perennial, bunching, warm weather native, reaching 5 to 12 inches tall. Has attractive spreading bell-shaped seeds that are purplish on the outside, drying to wheat color. Attracts birds and butterflies.

Cold: to 0F
Soil: well drained, sandy, clay
Light: full sun
Water: moderate to low



Hairy grama
Bouteloua hirsuta



Perennial, warm weather native, reaching to 1' tall. Provides nesting materials and structure for native bees.

Cold: to -38F
Soil: well drained, sandy, dry
Light: part shade
Water: moderate



**Shortspike windmill
grass**
*Chloris X subdoli-
chostachya*



Perennial, clumping, warm weather native, reaching from 1' to 3' tall.

Cold: to 0F
Soil: dry, moist
Light: sun
Water: moderate



Little bluestem
*Schizachyrium
scoparium*



Perennial bunchgrass to 2' tall, and less than 1" wide. Leaf blades and dark blue-green, fall flower stems are reddish. Entire plant turns to rust color in fall.

Cold: to -15F
Soil: well drained
Light: full sun
Water: moderate to low



PROJECT NAME: SH121 PUBLIC ART AND LANDSCAPING PROJECT

M & C Attachments

Example of TxDOT wild flowers seed mixture:

**Texas bluebonnet,
Bluebonnet, Texas
lupine, Buffalo
clover, Wolf-flower**
Lupinus texensis



Erect to spreading, bushy annual with softly hairy stems and mid-green leaves. In summer, deep blue to blue-purple flowers are borne. Has a maximum height of 10-12" and spread of 9".

Cold: to -10F
Soil: well drained, sandy
Light: full sun
Water: moderate



Indian blanket
Gaillardia pulchella



Perennial. Red or orange flower petals with yellow tips, or yellow petals.

Cold: to -20F
Soil: well drained
Light: sun
Water: moderate



Missouri primrose
Oenothera macrocarpa



Hardy perennial. Heavy blooms with large yellow four petalled flowers. Usually grows 8-10 in. high, with flowers blooming 3-4 in. wide.

Cold: to -10F
Soil: well drained, dry
Light: full sun
Water: low



Prairie verbena
Verbena bipinnatifida



Low growing perennial. Purple to magenta flowers clusters in summer.

Cold: to 15F
Soil: well drained
Light: sun
Water: low



**Purple horsemint,
Lemon beebalm,
Lemon horsemint**
Monarda citriodora



Aromatic winter annual with unusual, tuft-like, lavender to pink, whorled flower heads. Can grow up to 2' in height.

Cold: to 10F
Soil: moderately fertile, humus-rich, moist, well-drained
Light: full sun to dappled shade
Water: moderate



**Pink evening prim-
rose**
Oenothera speciosa



Low growing herbaceous perennial, to 1-2' high. Multiple colors of flowers, spring through summer. Attracts birds, bees, and butterflies.

Cold: to -10F
Soil: well drained
Light: full sun (some partial shade)
Water: moderate

