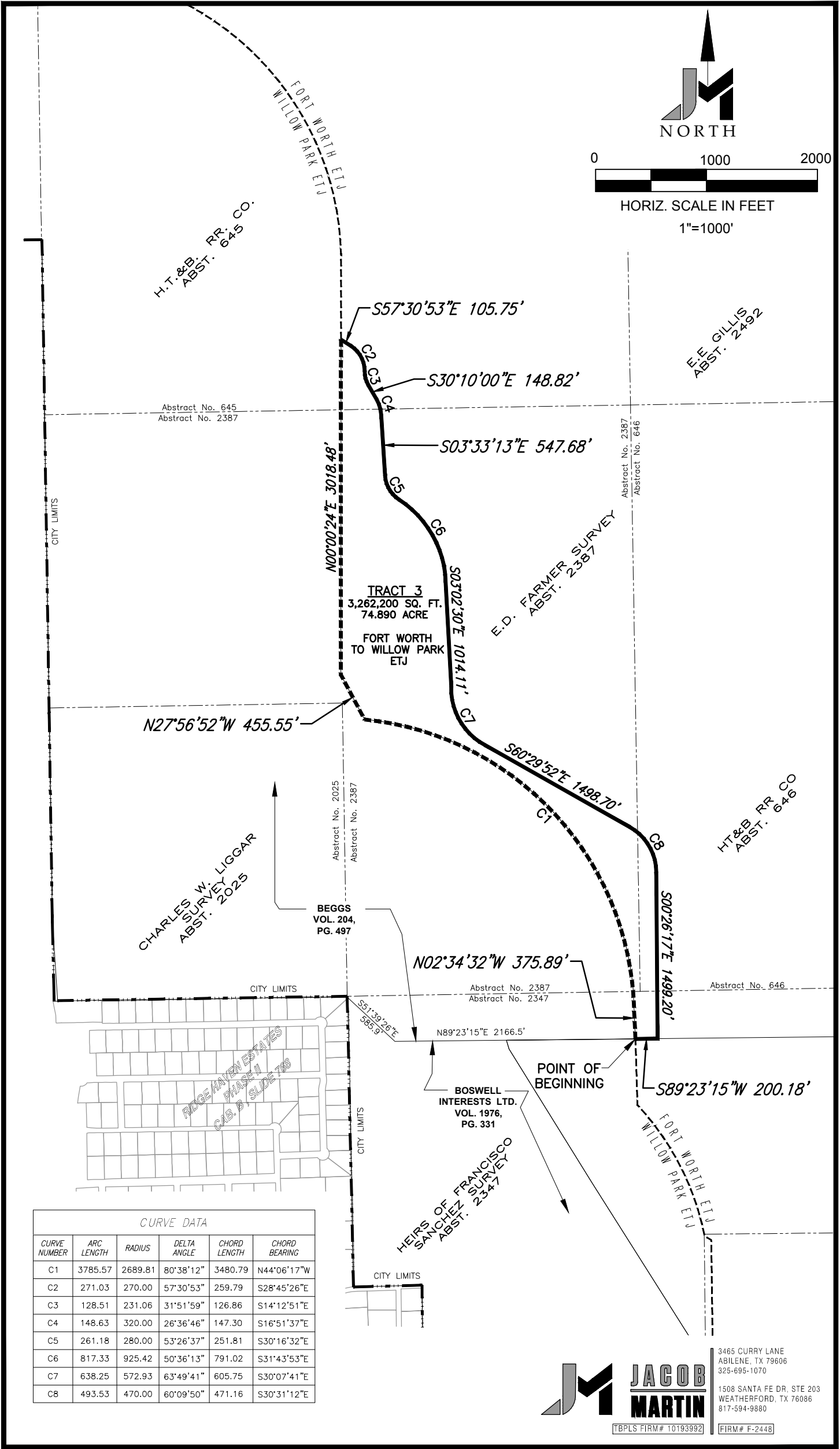


EXHIBIT A, Tract 3



## EXHIBIT A

### TRACT 3

SITUATED in Parker County, Texas, and being 74.890 acres of land out of the Heirs of Francisco Sanchez Survey, Abstract No. 2347, E.D. Farmer Survey, Abstract No. 2387, H.T.&B. RR. Co., Abstract 645, and H.T.&B. RR. Co., Abstract 646, and being a portion out of certain tract to George Beggs III, as described in deed conveyed to J.E. Beggs, recorded in Volume 204, Page 497, Parker County Deed Records, said 74.890 acres being more fully described as follows:

COMMENCING at the northeast corner of Ridge Haven Estates Phase II, an addition to the City of Willow Park, according to plat records in plat cabinet B, slide 768, Plat Records Parker County, Texas, also being the common corner of the northeast corner of H. Roark Survey, Abstract No. 1137, the northwest corner of Heirs of Francisco Sanchez Survey, Abstract No. 2347 and the southwest corner of E.D. Farmer Survey, Abstract No. 2387, THENCE South 51 degrees, 39 minutes, 26 seconds east with the south line of said Beggs property line, 585.9 feet; THENCE North 89 degrees, 23 minutes, 15 seconds East continuing with said south property line, 2166.5 feet to a point on the existing common line of the Fort Worth and Willow Park Extraterritorial Jurisdiction line, for the POINT-OF-BEGINNING;

THENCE North 02 degrees, 34 minutes, 32 seconds West with said common Extraterritorial Jurisdiction line, 375.89 feet to a point in the beginning of a curve to the left with a radius of 2689.81 feet, a delta angle of 80 degrees, 38 minutes, 12 seconds, with a long chord that bears North 44 degrees, 06 minutes, 17 seconds West, chord length 3480.79 feet;

THENCE with said curve and continuing along said common Extraterritorial Jurisdiction line 3785.57 feet;

THENCE North 27 degrees, 56 minutes, 52 seconds West, continuing along said common Extraterritorial Jurisdiction line 455.55 feet;

THENCE North 00 degrees, 00 minutes, 24 seconds East, continuing along said common Extraterritorial Jurisdiction line 3018.48 feet;

THENCE South 57 degrees, 30 minutes, 53 seconds East, departing said common Extraterritorial Jurisdiction line 105.75 feet to a point in the beginning of a curve to the right with a radius of 270.00 feet, a delta angle of 57 degrees, 30 minutes, 53 seconds, with a long chord that bears South 28 degrees, 45 minutes, 26 seconds East, chord length 259.79 feet;

THENCE along said curve to the right 271.03 feet to a point for a reverse curve, having a radius of 231.06 feet, a delta angle of 31 degrees, 51 minutes 59 seconds, with a long chord that bears South 14 degrees, 12 minutes, 51 seconds East, chord length 126.86 feet to a point;

THENCE South 30 degrees, 10 minutes, 00 seconds East, 148.82 feet to a point in the beginning of a curve to the right with a radius of having a radius of 320.00 feet, a delta angle of 26 degrees, 36 minutes 46 seconds, with a long chord that bears South 16 degrees, 51 minutes, 37 seconds East, chord length 147.30 feet;

THENCE along said curve to the right 148.63 feet to a point,

THENCE South 03 degrees, 33 minutes, 13 seconds East, 547.68 feet to a point in the beginning of a curve to the left with a radius of 280.00 feet, a delta angle of 53 degrees, 26 minutes, 37 seconds, with a long chord that bears South 30 degrees, 16 minutes, 32 seconds East, chord length 251.81 feet;

THENCE along said curve to the left 261.18 feet to a point for a reverse cure, having a radius of 925.42 feet, a delta angle of 50 degrees, 36 minutes 13 seconds, with a long chord that bears South 31 degrees, 43 minutes, 53 seconds East, chord length 791.02 feet to a point;

THENCE South 03 degrees, 02 minutes, 30 seconds East, 1014.11 feet to a point in the beginning of a curve to the left with a radius of 572.93 feet, a delta angle of 63 degrees, 49 minutes, 41 seconds, with a long chord that bears South 30 degrees, 07 minutes, 41 seconds East, chord length 605.75 feet;

THENCE along said curve to the right 638.25 feet to a point;

THENCE South 60 degrees, 29 minutes, 52 seconds East, 1498.70 feet to a point in the beginning of a curve to the right with a radius of 470.00 feet, a delta angle of 60 degrees, 09 minutes, 50 seconds, with a long chord that bears South 30 degrees, 31 minutes, 12 seconds East, chord length 471.16 feet;

(Continue Tract 3)

THENCE along said curve to the right 493.53 feet to a point;

THENCE South 00 degrees, 26 minutes, 17 seconds East, 1499.20 feet to a point on the south line of said Beggs property

THENCE South 89 degrees, 23 minutes, 15 seconds West, 200.18 feet to the PLACE OF BEGINNING and containing 3,262,200 square feet (74.890 acre).

**THIS DESCRIPTION WAS PREPARED TO ACCOMPANY AN EXHIBIT OF THE DESCRIBED PROPERTY.**

**JACOB & MARTIN, LLC.**

**CONSULTING ENGINEERS**

TBPLS Firm Registration No. 10193992

June 28, 2018