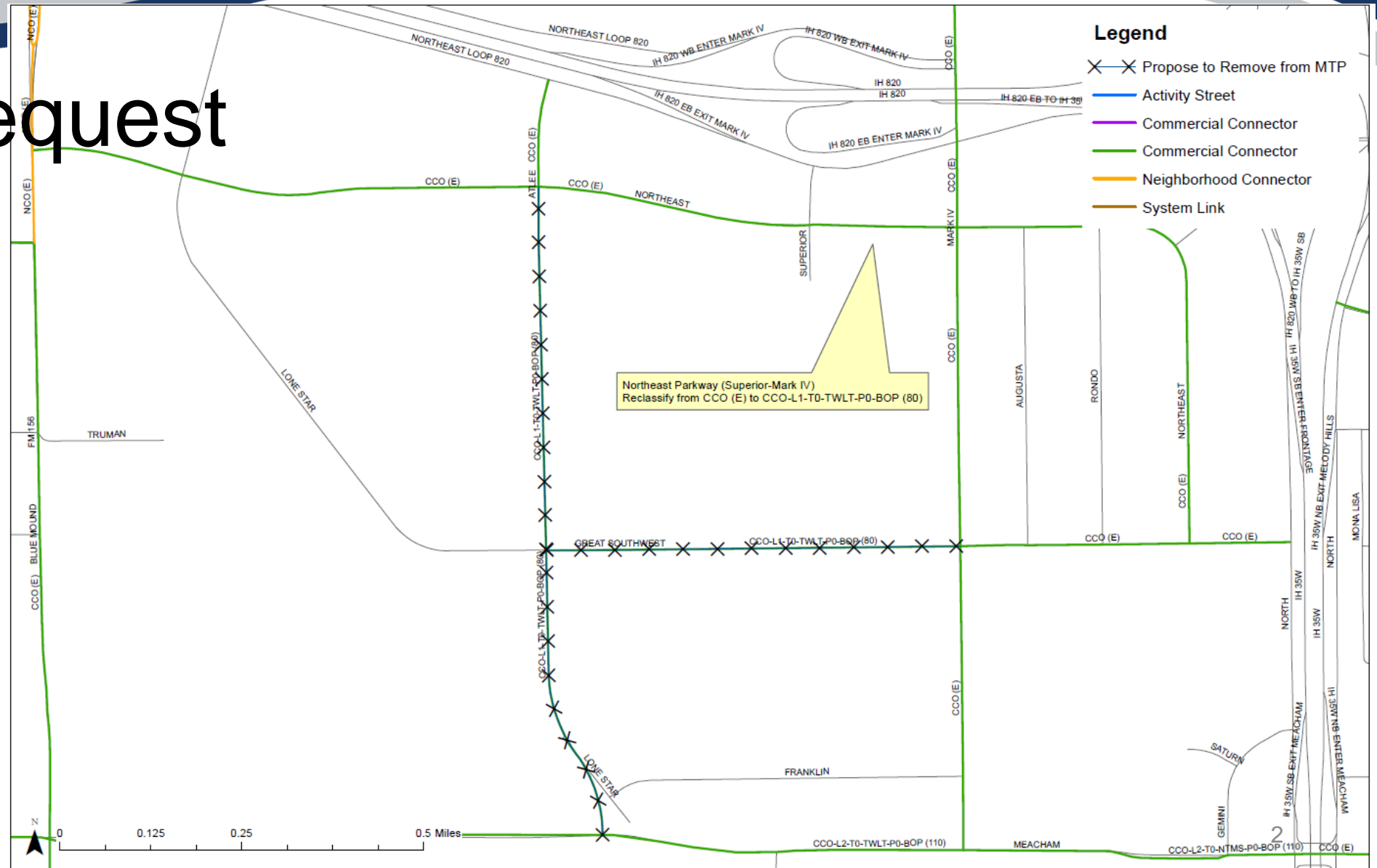




# Powerpoint Presentation

Presented by Julia Ryan



# Lone Star Parkway Issues

- Projected traffic volumes are **more consistent with a collector** than a thoroughfare.
- Lone Star Boulevard segment is **short and runs parallel** to other thoroughfares approximately ½ mile away to the east and west.
- The road would add **two new at-grade rail crossings** along spur tracks in this area.
- The **constructability** of the segment at Meacham Boulevard would be difficult due to the existing railroad bridge and the angle at which the existing portion of Lone Star Boulevard is currently built.

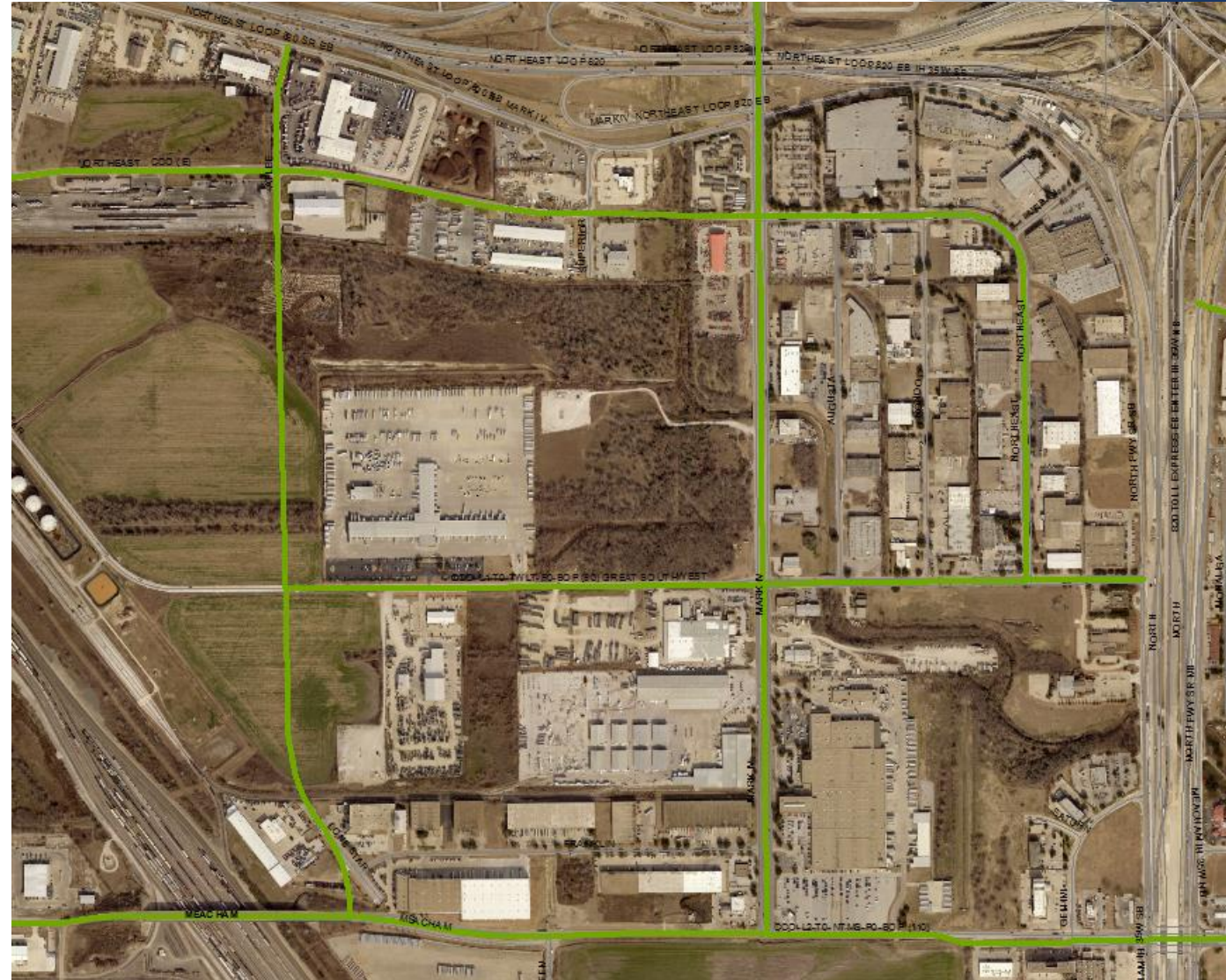






# Conclusion

- Lone Star Blvd can be removed without disrupting connectivity or traffic flow
- Great Southwest between Lone Star and Mark IV can be removed as a result (connection exists)





# MTP Cleanup

- Northeast Parkway incorrectly designated “established”
- Request to modify cross section code to: CCO-L1-T0-TWLT-P0-BOP (80)



# Questions/Comments?

