

## **EXHIBIT "A"**

**VACATION OF RIGHT-OF-WAY  
A PORTION OF CHERRY STREET  
A PORTION OF TEXAS STREET  
A PORTION OF BURNETT STREET  
SARAH GRAY JENNINGS SURVEY, ABSTRACT NO. 844  
CITY OF FORT WORTH, TARRANT COUNTY, TEXAS**

**PART 1  
A PORTION OF CHERRY STREET**

Being a 306 square foot tract of land situated in the Sarah Gray Jennings Survey, Abstract No. 844, City of Fort Worth, Tarrant County, Texas, and being a portion of Cherry Street as referenced in the book "Map of Fort Worth Texas Centennial Edition" published by Brooks Baker in 1949, said 306 square foot tract of land being more particularly described by metes and bounds as follows:

**BEGINNING** at a point in the west line of Lot 5, Block 2 of Nance's Addition (an unrecorded subdivision) and in the east line of Cherry Street (a 60.0 right-of-way), from which an "X" cut in concrete found for the southwest corner of said Lot 5 and the northwest corner of Lot 8, Block 3 of said Nance's Addition bears South 00 degrees 23 minutes 20 seconds East, a distance of 11.43 feet;

**THENCE** South 89 degrees 28 minutes 23 seconds West, a distance of 10.78 feet to a point for corner;

**THENCE** North 00 degrees 31 minutes 18 seconds West, a distance of 28.33 feet to a point for corner;

**THENCE** North 89 degrees 28 minutes 23 seconds East, a distance of 10.84 feet to a point for corner in the west line of said Lot 5 and in the east line of said Cherry Street, from which a 5/8 inch iron rod with cap stamped "GORRONDONA" found for the northwest corner of Lot 1, Block 2 of said Nance's Addition bears North 00 degrees 23 minutes 20 seconds West, a distance of 201.89 feet, said 5/8 inch iron rod with cap stamped "GORRONDONA" being the intersection of the east line of said Cherry Street with the south line of Texas Street (a 60.0' right-of-way);

**THENCE** South 00 degrees 23 minutes 20 seconds East, with the west line of said Lot 5 and with the east line of said Cherry Street, a distance of 28.33 feet to the **POINT OF BEGINNING**, and containing 306 square feet or 0.007 acres of land, more or less.

**PART 2**  
**A PORTION OF CHERRY STREET**

Being a 278 square foot tract of land situated in the Sarah Gray Jennings Survey, Abstract No. 844, City of Fort Worth, Tarrant County, Texas, and being a portion of Cherry Street as referenced in the book "Map of Fort Worth Texas Centennial Edition" published by Brooks Baker in 1949, said 278 square foot tract of land being more particularly described by metes and bounds as follows:

**BEGINNING** at a point in the west line of Lot 1, Block 2 of Nance's Addition (an unrecorded subdivision) and in the east line of Cherry Street (a 60.0' right-of-way), from which an "X" cut in concrete found for the southwest corner of Lot 5, Block 2 of said Nance's Addition bears South 00 degrees 23 minutes 20 seconds East, a distance of 180.77 feet, said "X" cut in concrete being the northwest corner of Lot 8, Block 2 of said Nance's Addition;

**THENCE** South 89 degrees 28 minutes 23 seconds West, a distance of 11.17 feet to a point for corner;

**THENCE** North 00 degrees 31 minutes 18 seconds West, a distance of 24.83 feet to a point for corner;

**THENCE** North 89 degrees 28 minutes 23 seconds East, a distance of 11.23 feet to a point for corner in the west line of said Lot 1 and in the east line of said Cherry Street, from which a 5/8 inch iron rod with cap stamped "GORRONDONA" bears North 00 degrees 23 minutes 20 seconds West, a distance of 36.05 feet, said 5/8 inch iron rod with cap stamped "GORRONDONA" being the intersection of the east line of said Cherry Street with the south line of Texas Street (a 60.0' right-of-way);

**THENCE** South 00 degrees 23 minutes 20 seconds East, with the west line of said Lot 1 and with the east line of said Cherry Street, a distance of 24.83 feet to the **POINT OF BEGINNING**, and containing 278 square feet or 0.006 acres of land, more or less.

**PART 3**  
**A PORTION OF TEXAS STREET**

Being a 1,060 square foot tract of land situated in the Sarah Gray Jennings Survey, Abstract No. 844, City of Fort Worth, Tarrant County, Texas, and being a portion of Texas Street as referenced in the book "Map of Fort Worth Texas Centennial Edition" published by Brooks Baker in 1949, said 1,060 square foot tract of land being more particularly described by metes and bounds as follows:

**BEGINNING** at a 5/8 inch iron rod with cap stamped "GORRONDONA" found for the northwest corner of Lot 1, Block 2 of Nance's Addition (an unrecorded subdivision), said 5/8 inch iron rod with cap stamped "GORRONDONA" being the intersection of the south line of Texas Street (a 60.0' right-of-way) with the east line of Cherry Street (a 60.0' right-of-way);

**THENCE** South 89 degrees 34 minutes 07 seconds West, a distance of 11.31 feet to a point for corner;

**THENCE** North 40 degrees 35 minutes 02 seconds East, a distance of 22.72 feet to a point for corner;

**THENCE** North 89 degrees 14 minutes 15 seconds East, a distance of 47.68 feet to a point for corner;

**THENCE** South 45 degrees 45 minutes 45 seconds East, a distance of 11.31 feet to a point for corner;

**THENCE** South 00 degrees 25 minutes 53 seconds East, a distance of 9.46 feet to a point for corner in the north line of said Lot 1 and in the south line of said Texas Street, from which 1/2 inch iron rod found for the northeast corner of said Lot 1 and the northwest corner of Lot 2, Block 2 of said Nance's Addition bears North 89 degrees 34 minutes 07 seconds East, a distance of 43.50 feet;

**THENCE** South 89 degrees 34 minutes 07 seconds West, with the north line of said Lot 1 and with the south line of said Texas Street, a distance of 59.33 feet to the **POINT OF BEGINNING**, and containing 1,060 square feet or 0.024 acres of land, more or less.

**PART 4**  
**A PORTION OF BURNETT STREET**

Being a 494 square foot tract of land situated in the Sarah Gray Jennings Survey, Abstract No. 844, City of Fort Worth, Tarrant County, Texas, and being a portion of Burnett Street as referenced in the book "Map of Fort Worth Texas Centennial Edition" published by Brooks Baker in 1949, said 494 square foot tract of land being more particularly described by metes and bounds as follows:

**BEGINNING** at a point in the east line of Lot 6, Block 2 of Nance's Addition (an unrecorded subdivision), in the west line of Burnett Street (a 60.0' right-of-way) and in the east line of a 0.223 acre tract of land (by deed) described as Tract I conveyed to Burnett Lofts FW, LLC as recorded in Instrument No. D217248875 of the Official Public Records of Tarrant County, Texas, from which a 5/8 inch iron rod with cap (illegible) found for the southeast corner of said Lot 6, the northeast corner of Lot 7, Block 2 of said Nance's Addition and the southeast corner of said 0.223 acre tract of land bears South 00 degrees 22 minutes 50 seconds East, a distance of 52.91 feet;

**THENCE** North 00 degrees 22 minutes 50 seconds West, with the east line of said Lot 6, with the east line of said 0.223 acre tract of land and with the west line of said Burnett Street, a distance of 32.94 feet to a point for corner in the east line of Lot 3, Block 2 of said Nance's Addition, from which a "Y" cut in concrete found for the northeast corner of said 0.223 acre tract of land bears North 00 degrees 22 minutes 50 seconds West, a distance of 5.46 feet;

**THENCE** North 89 degrees 37 minutes 10 seconds East, a distance of 8.94 feet to a point for corner;

**THENCE** South 45 degrees 23 minutes 00 seconds East, a distance of 11.31 feet to a point for corner;

**THENCE** South 00 degrees 23 minutes 00 seconds East, a distance of 16.94 feet to a point for corner;

**THENCE** South 44 degrees 37 minutes 00 seconds West, a distance of 11.31 feet to a point for corner;

**THENCE** South 89 degrees 37 minutes 10 seconds West, a distance of 8.94 feet to the **POINT OF BEGINNING**, and containing 494 square feet or 0.011 acres of land, more or less.

**PART 5**  
**A PORTION OF BURNETT STREET**

Being a 118 square foot tract of land situated in the Sarah Gray Jennings Survey, Abstract No. 844, City of Fort Worth, Tarrant County, Texas, and being a portion of Burnett Street as referenced in the book "Map of Fort Worth Texas Centennial Edition" published by Brooks Baker in 1949, said 118 square foot tract of land being more particularly described by metes and bounds as follows:

**BEGINNING** at a point in the east line of Lot 6, Block 2 of Nance's Addition (an unrecorded subdivision), in the west line of Burnett Street (a 60.0' right-of-way) and in the east line of a 0.223 acre tract of land (by deed) described as Tract I conveyed to Burnett Lofts FW, LLC as recorded in Instrument No. D217248875 of the Official Public Records of Tarrant County, Texas, from which a "Y" cut in concrete found for the northeast corner of said 0.223 acre tract of land bears North 00 degrees 22 minutes 50 seconds West, a distance of 82.40 feet;

**THENCE** North 89 degrees 37 minutes 10 seconds East, a distance of 8.95 feet to a point for corner;

**THENCE** South 45 degrees 23 minutes 00 seconds East, a distance of 10.49 feet to a point for corner;

**THENCE** South 00 degrees 23 minutes 00 seconds East, a distance of 1.48 feet to a point for corner;

**THENCE** South 89 degrees 34 minutes 04 seconds West, a distance of 16.36 feet to a 5/8 inch iron rod with cap (illegible) found for the southeast corner of said Lot 6, the southeast corner of said 0.223 acre tract of land and the northeast corner of Lot 7 Block 2 of Nance's Addition;

**THENCE** North 00 degrees 22 minutes 50 seconds West, with the east line of said Lot 6, with the east line of said 0.223 acre tract of land and with the west line of said Burnett Street, a distance of 8.91 feet to the **POINT OF BEGINNING**, and containing 118 square feet or 0.003 acres of land, more or less.

**PART 6**  
**A PORTION OF BURNETT STREET**

Being a 187 square foot tract of land situated in the Sarah Gray Jennings Survey, Abstract No. 844, City of Fort Worth, Tarrant County, Texas, and being a portion of Burnett Street as referenced in the book "Map of Fort Worth Texas Centennial Edition" published by Brooks Baker in 1949, said 187 square foot tract of land being more particularly described by metes and bounds as follows:

**BEGINNING** at a 5/8 inch iron rod with cap (illegible) found for the southeast corner of Lot 6, Block 2 of Nance's Addition (an unrecorded subdivision), the northeast corner of Lot 7, Block 2 of said Nance's Addition and the southeast corner of a 0.223 acre tract of land (by deed) described as Tract I conveyed to Burnett Lofts FW, LLC as recorded in Instrument No. D217248875 of the Official Public Records of Tarrant County, Texas, from which a "Y" cut in concrete found for the northeast corner of said 0.223 acre tract of land bears North 00 degrees 22 minutes 50 seconds West, a distance of 95.49 feet;

**THENCE** North 89 degrees 34 minutes 04 seconds East, a distance of 16.36 feet to a point for corner;

**THENCE** South 00 degrees 23 minutes 00 seconds East, a distance of 5.69 feet to a point for corner;

**THENCE** South 44 degrees 37 minutes 00 seconds West, a distance of 10.49 feet to a point for corner;

**THENCE** South 89 degrees 37 minutes 10 seconds West, a distance of 8.95 feet to a point for corner in the east line of said Lot 7 and in the west line of said Burnett Street;

**THENCE** North 00 degrees 22 minutes 50 seconds West, with the east line of said Lot 7 and with the west line of said Burnett Street, a distance of 13.09 feet to the **POINT OF BEGINNING**, and containing 187 square feet or 0.004 acres of land, more or less.

**Notes:**

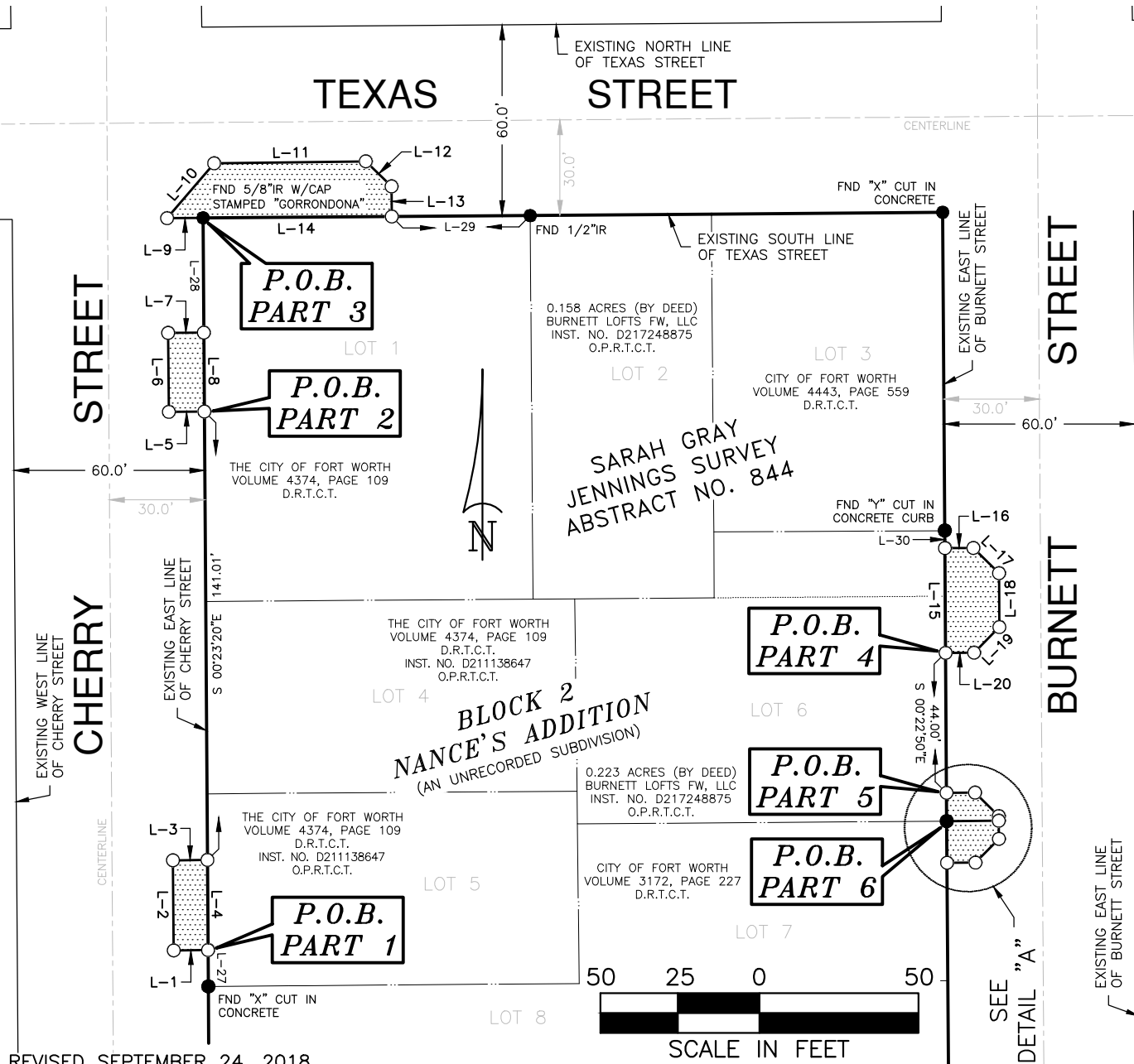
- (1) A plat of same date herewith accompanies this legal description.
- (2) Bearings are referenced to the Texas State Plane Coordinate System, NAD-83(2011), North Central Zone (4202). Surface adjustment factor for this project = 1.00012. Distances and areas shown hereon are surface.

September 17, 2018  
Revised September 24, 2018

  
Richard Kennedy  
Registered Professional Land Surveyor  
Texas No. 5527  
Gorrondona & Assoc., Inc.  
Texas Firm No. 10106900



# EXHIBIT "B"



REVISED SEPTEMBER 24, 2018



## City of Fort Worth

1000 THROCKMORTON STREET • FORT WORTH, TEXAS 76102

### VACATION OF RIGHT-OF-WAY A PORTION OF CHERRY STREET A PORTION OF TEXAS STREET A PORTION OF BURNETT STREET

SURVEY: SARAH GRAY JENNINGS SURVEY, ABSTRACT NO. 844

LOCATION: CITY OF FORT WORTH, TARRANT COUNTY, TEXAS

VACATION AREA: 306 SQ.FT., 278 SQ.FT., 1,060 SQ.FT., 494 SQ.FT. 118 SQ.FT. & 187 SQ.FT.

JOB No. CATA1701.00

DRAWN BY: RK

CAD FILE: CHERRY\_TEXAS\_BURNETT\_CLOSURE\_R01.DWG

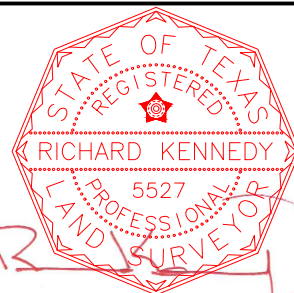
DATE: SEPTEMBER 17, 2018

EXHIBIT B PAGE 1 OF 2

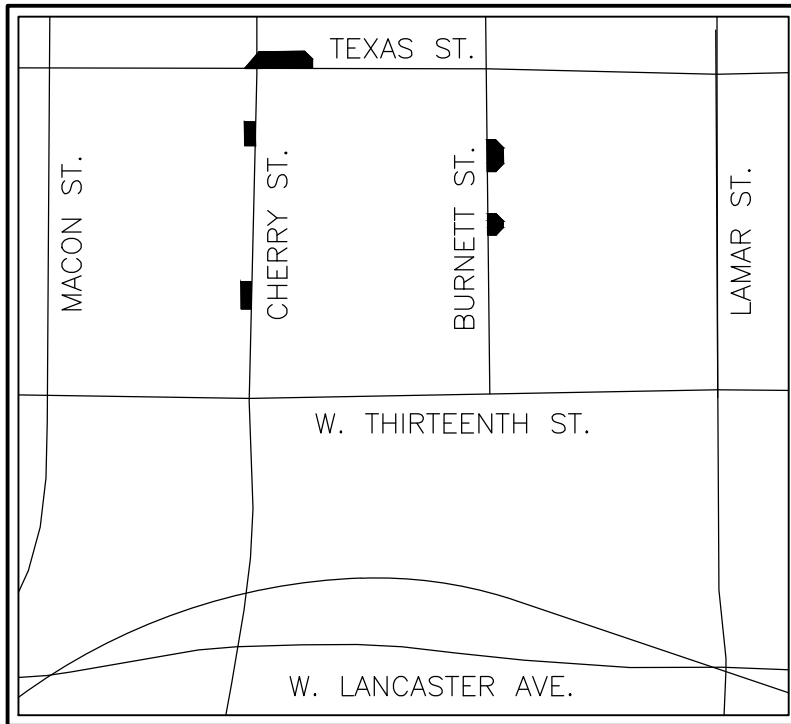
SCALE: 1" = 50'

RICHARD KENNEDY  
REGISTERED PROFESSIONAL LAND SURVEYOR  
NO. 5527 TEXAS FIRM No. 10106900

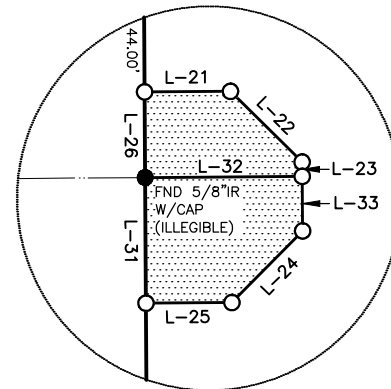
GORRONDONA & ASSOCIATES, INC. • 7524 JACK NEWELL BOULEVARD SOUTH FORT WORTH, TX. 76118 • 817-496-1424 FAX 817-496-1768



# EXHIBIT "B"



VICINITY MAP  
NOT TO SCALE



DETAIL "A"  
NOT TO SCALE

LINE TABLE		
LINE	BEARING	DISTANCE
L-1	S 89°28'23"W	10.78'
L-2	N 00°31'18"W	28.33'
L-3	N 89°28'23"E	10.84'
L-4	S 00°23'20"E	28.33'
L-5	S 89°28'23"W	11.17'
L-6	N 00°31'18"W	24.83'
L-7	N 89°28'23"E	11.23'
L-8	S 00°23'20"E	24.83'
L-9	S 89°34'07"W	11.31'
L-10	N 40°35'02"E	22.72'
L-11	N 89°14'15"E	47.68'
L-12	S 45°45'45"E	11.31'
L-13	S 00°25'53"E	9.46'
L-14	S 89°34'07"W	59.33'
L-15	N 00°22'50"W	32.94'
L-16	N 89°37'10"E	8.94'
L-17	S 45°23'00"E	11.31'
L-18	S 00°23'00"E	16.94'
L-19	S 44°37'00"W	11.31'
L-20	S 89°37'10"W	8.94'
L-21	N 89°37'10"E	8.95'
L-22	S 45°23'00"E	10.49'
L-23	S 00°23'00"E	1.48'
L-24	S 44°37'00"W	10.49'
L-25	S 89°37'10"W	8.95'
L-26	N 00°22'50"W	8.91'
L-27	S 00°23'20"E	11.43'
L-28	S 00°23'20"E	36.05'
L-29	N 89°34'07"E	43.50'
L-30	N 00°22'50"W	5.46'
L-31	N 00°22'50"W	13.09'
L-32	S 89°34'04"W	16.36'
L-33	S 00°23'00"E	5.69'

## NOTES:

1. A LEGAL DESCRIPTION OF SAME DATE HEREWITH ACCOMPANIES THIS PLAT.
2. BEARINGS ARE REFERENCED TO THE TEXAS STATE PLANE COORDINATE SYSTEM, NAD-83(2011), NORTH CENTRAL ZONE (4202). SURFACE ADJUSTMENT FACTOR FOR THIS PROJECT=1.00012. DISTANCES AND AREAS SHOWN HEREON ARE SURFACE.

REVISED SEPTEMBER 24, 2018



## City of Fort Worth

1000 THROCKMORTON STREET • FORT WORTH, TEXAS 76102

## VACATION OF RIGHT-OF-WAY A PORTION OF CHERRY STREET A PORTION OF TEXAS STREET A PORTION OF BURNETT STREET

SURVEY: SARAH GRAY JENNINGS SURVEY, ABSTRACT NO. 844

LOCATION: CITY OF FORT WORTH, TARRANT COUNTY, TEXAS

VACATION AREA: 306 SQ.FT., 278 SQ.FT., 1,060 SQ.FT., 494 SQ.FT. 118 SQ.FT. & 187 SQ.FT.

JOB No. CATA1701.00

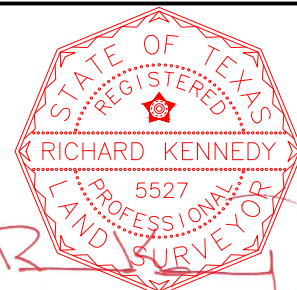
DRAWN BY: RK

CAD FILE: CHERRY\_TEXAS\_BURNETT\_CLOSURE\_R01.DWG

DATE: SEPTEMBER 17, 2018

EXHIBIT B PAGE 2 OF 2

SCALE: 1" = 50'



RICHARD KENNEDY  
REGISTERED PROFESSIONAL LAND SURVEYOR  
NO. 5527 TEXAS FIRM No. 10106900