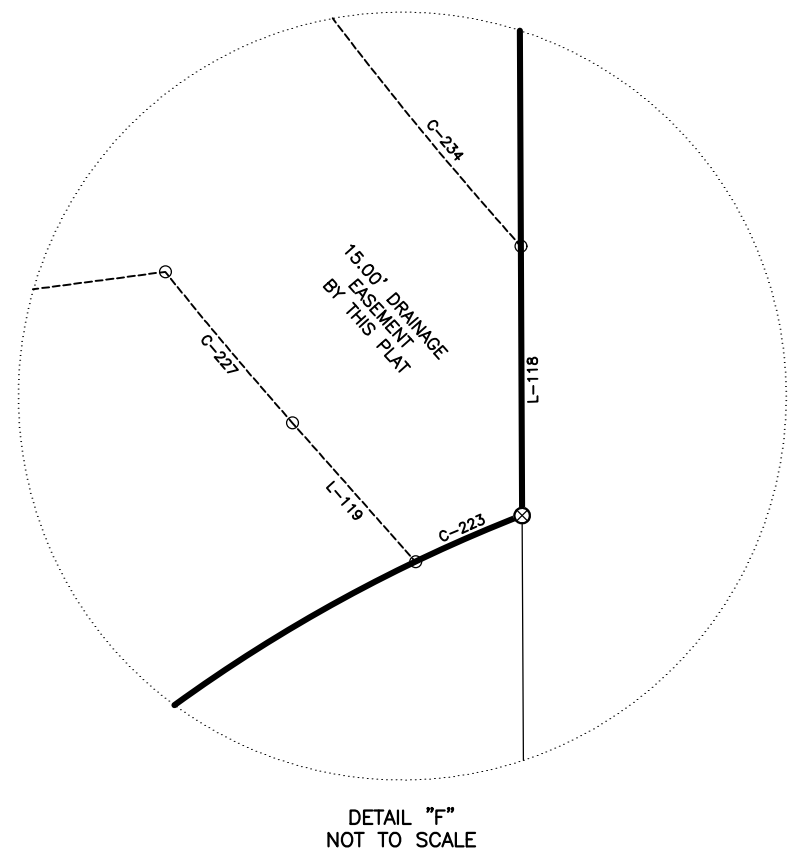
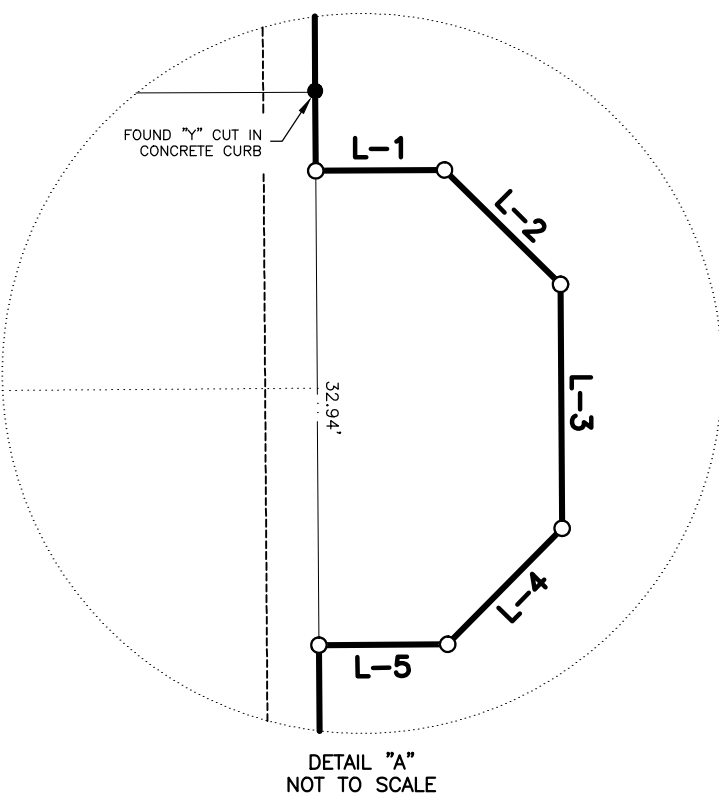
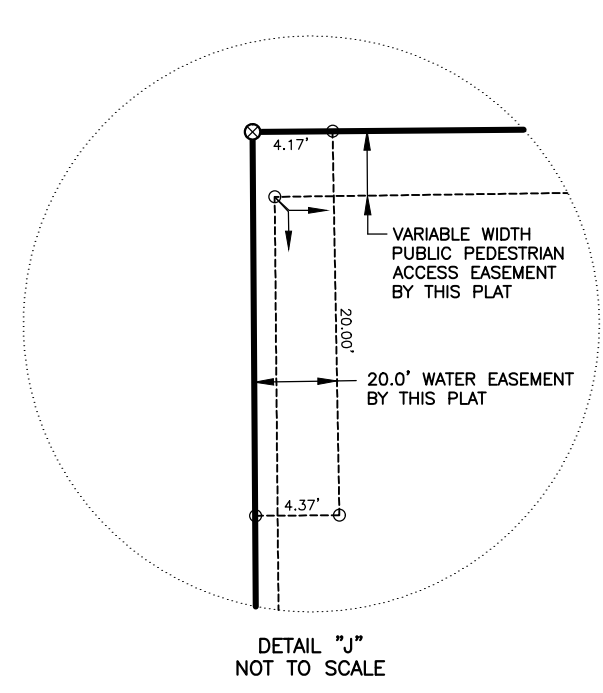
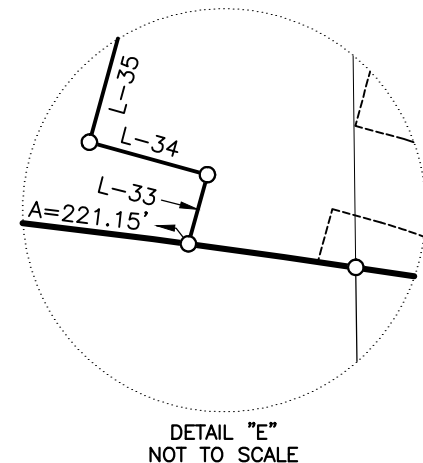
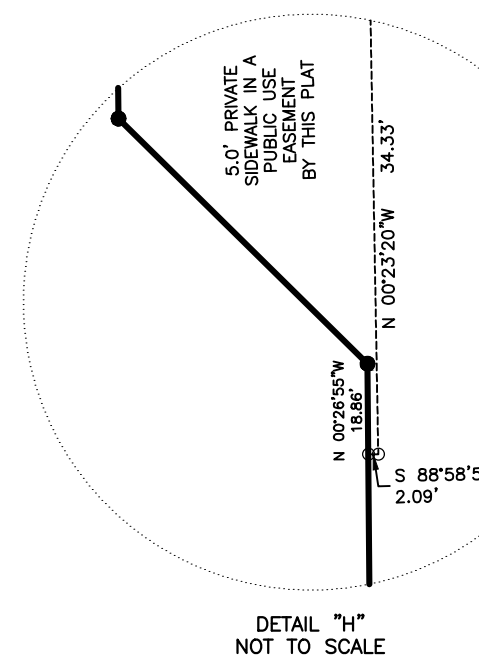
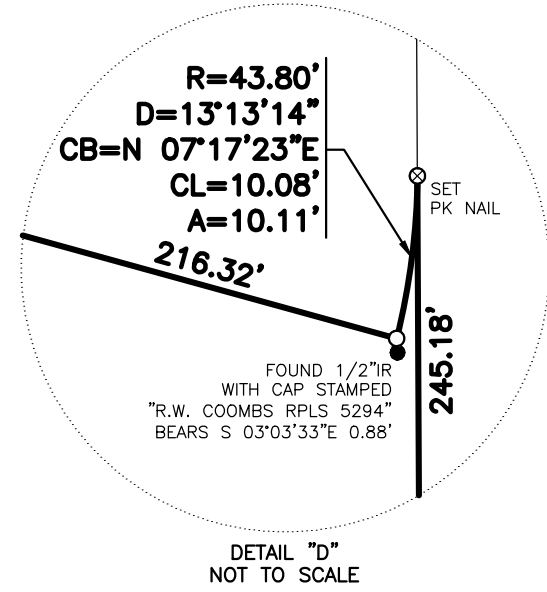
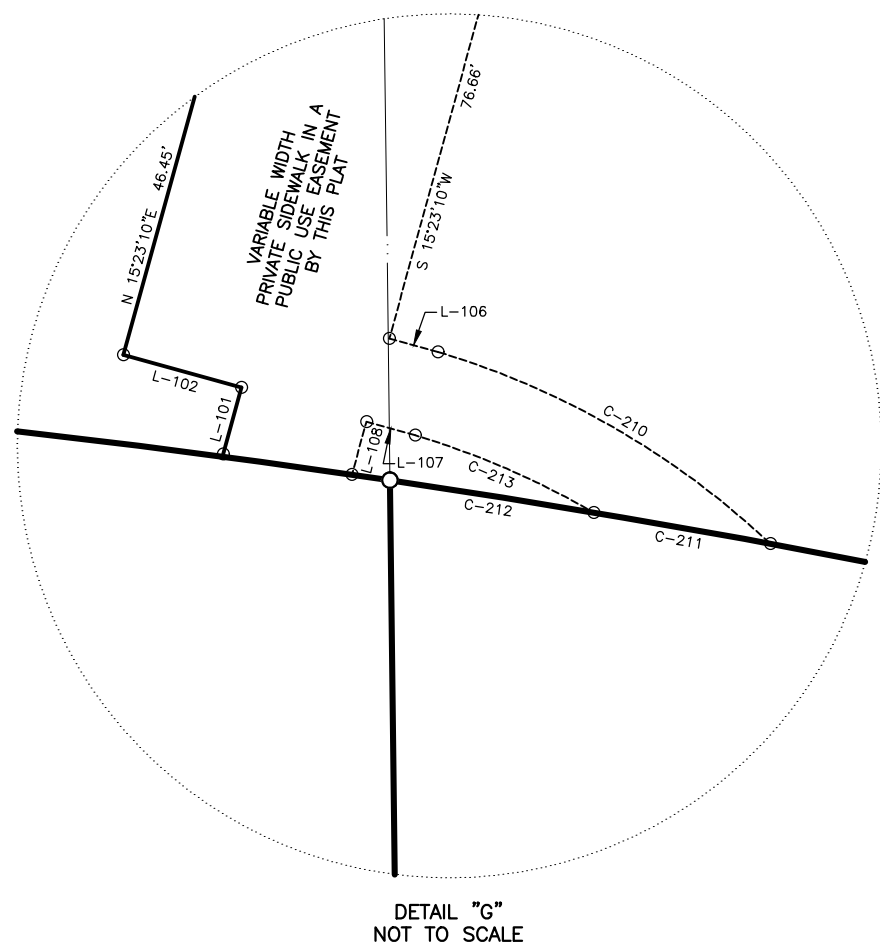
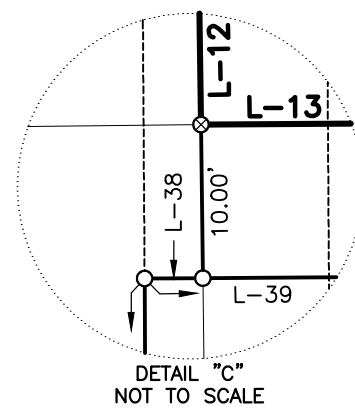
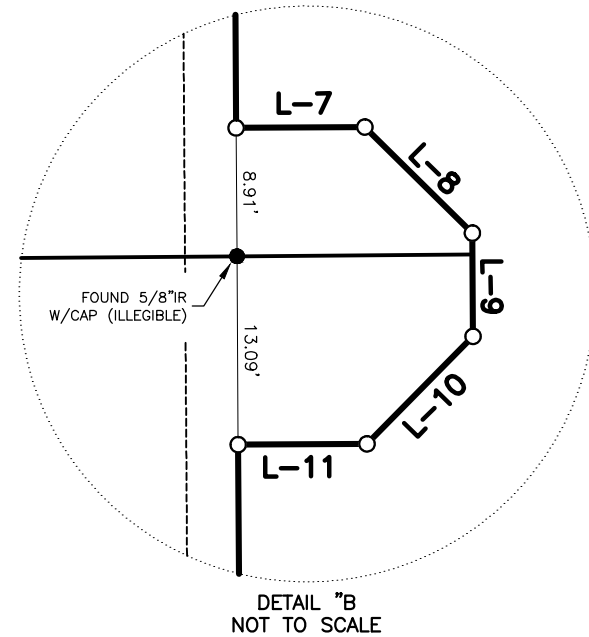


CURVE TABLE					
CURVE	RADIUS	DELTA	CHORD BEARING	CHORD	ARC
C-201	40.85'	52°55'08"	S 66°48'42"E	36.40'	37.73'
C-202	694.94'	5°48'28"	N 86°13'25"E	70.41'	70.44'
C-203	58.88'	14°40'07"	N 22°17'14"E	15.03'	15.07'
C-204	22.00'	43°41'57"	N 12°24'37"E	16.37'	16.78'
C-205	17.00'	90°59'48"	N 14°47'06"E	24.25'	27.00'
C-206	46.90'	38°01'20"	N 26°45'55"W	30.55'	31.12'
C-207	40.90'	44°48'52"	S 30°41'03"E	31.18'	31.99'
C-209	4.50'	202°16'39"	S 12°09'28"E	8.83'	15.89'
C-210	57.79'	26°35'35"	S 60°01'58"E	26.58'	26.82'
C-211	745.00'	0°57'38"	N 79°57'44"W	12.49'	12.49'
C-212	745.00'	1°05'24"	N 80°59'15"W	14.17'	14.17'
C-213	57.79'	13°20'00"	N 66°39'45"W	13.42'	13.45'
C-214	745.00'	7°11'27"	S 84°58'39"W	93.44'	93.50'
C-215	745.00'	0°50'09"	S 80°55'52"W	10.87'	10.87'
C-216	48.42'	15°15'11"	N 57°29'17"W	12.85'	12.89'
C-216A	1,451.00'	0°11'05"	N 03°16'15"E	4.68'	4.68'
C-217	25.00'	74°12'44"	S 37°29'22"E	30.16'	32.38'
C-218	51.00'	42°44'24"	S 53°13'31"E	37.17'	38.04'
C-219	25.00'	58°08'41"	S 60°55'40"E	24.30'	25.37'
C-220	51.00'	58°13'47"	N 60°58'13"W	49.63'	51.83'
C-221	25.00'	42°44'24"	N 53°13'31"W	18.22'	18.65'
C-222	51.00'	74°12'44"	N 37°29'22"W	61.54'	66.06'
C-223	81.12'	4°16'29"	S 66°32'09"W	6.05'	6.05'
C-227	207.50'	2°50'30"	N 40°07'13"W	10.29'	10.29'
C-228	207.50'	6°37'33"	N 30°39'25"W	23.98'	24.00'
C-229	192.50'	25°25'41"	N 40°03'29"W	84.73'	85.43'
C-230	192.50'	17°05'13"	N 66°03'07"W	57.20'	57.41'
C-231	192.50'	15°24'17"	N 82°17'52"W	51.60'	51.76'
C-232	207.50'	15°24'17"	S 82°17'52"E	55.62'	55.79'
C-233	207.50'	47°15'05"	S 50°58'11"E	166.32'	171.12'
C-234	192.50'	14°29'38"	S 34°35'27"E	48.57'	48.70'

LINE TABLE			
L-101	N 15°23'08"E	5.01'	
L-102	N 74°36'52"W	8.00'	
L-103	N 08°39'16"W	7.96'	
L-104	S 01°01'08"E	11.17'	
L-105	S 23°17'47"E	7.50'	
L-106	S 74°36'52"E	4.00'	
L-107	N 74°36'52"W	4.00'	
L-108	S 15°23'08"W	3.83'	
L-109	N 89°42'59"E	12.11'	
L-110	S 89°42'59"W	12.16'	
L-111	N 74°35'43"W	5.93'	
L-112	N 89°39'06"E	17.02'	
L-113	N 89°42'00"E	14.24'	
L-114	N 00°17'01"W	34.79'	
L-118	S 00°17'01"E	14.03'	
L-119	N 41°32'28"W	9.67'	
L-120	S 82°30'13"W	22.77'	
L-121	N 07°29'47"W	15.00'	
L-122	N 82°30'13"E	14.51'	
L-123	S 15°24'17"W	15.20'	
L-124	N 74°35'43"W	15.00'	
L-125	N 15°24'17"E	20.50'	
L-126	N 74°35'43"W	38.01'	
L-127	N 90°00'00"W	19.47'	
L-128	N 00°00'00"W	15.00'	
L-129	N 90°00'00"E	19.47'	
L-130	S 74°35'43"E	38.01'	



LINE TABLE		
L-1	N 89°37'10"E	8.94'
L-2	S 45°23'00"E	11.31'
L-3	S 00°23'00"E	16.94'
L-4	S 44°37'00"W	11.31'
L-5	S 89°37'10"W	8.94'
L-6	S 00°22'55"E	44.00'
L-7	N 89°37'10"E	8.95'
L-8	S 45°23'00"E	10.49'
L-9	S 00°23'00"E	7.17'
L-10	S 44°37'00"W	10.49'
L-11	S 89°37'10"W	8.95'
L-12	S 00°44'05"E	31.14'
L-13	N 89°39'06"E	59.79'
L-14	N 89°42'00"E	18.15'
L-15	S 21°01'26"W	28.68'
L-16	S 20°07'53"E	44.69'
L-17	N 00°42'01"W	14.98'
L-18	N 00°23'47"W	31.45'
L-19	N 00°26'55"W	47.99'
L-20	N 45°26'55"W	7.28'
L-21	S 89°28'23"W	10.78'
L-22	N 00°31'18"W	28.33'
L-23	N 89°28'23"E	10.84'
L-24	S 89°28'23"W	11.17'
L-25	N 00°31'18"W	24.83'
L-26	N 89°28'23"E	11.23'
L-27	N 00°23'20"W	36.05'
L-28	S 89°34'07"W	11.31'
L-29	N 40°35'02"E	22.72'
L-30	N 89°14'15"E	47.68'
L-31	S 45°45'45"E	11.31'
L-32	S 00°25'53"E	9.46'
L-33	N 15°23'08"E	5.01'
L-34	N 74°36'52"W	8.00'
L-35	N 15°23'10"E	46.45'
L-36	N 08°39'16"W	7.96'
L-37	N 00°23'18"W	43.55'
L-38	N 89°39'06"E	3.82'
L-39	N 89°39'06"E	63.55'
L-40	N 89°42'00"E	14.24'



**FINAL PLAT**  
OF  
**LOT 1R, 2R AND 3R BLOCK 2**  
**LOT 1R, BLOCK 3**  
AND  
**LOT 1R, BLOCK 4**  
OF  
**NANCE'S ADDITION**  
AN ADDITION TO THE  
**CITY OF FORT WORTH**  
**TARRANT COUNTY, TEXAS**  
SITUATED IN THE  
**SARAH GRAY JENNINGS SURVEY, ABSTRACT NO. 844**  
**CITY OF FORT WORTH**  
**TARRANT COUNTY, TEXAS**

SURVEYOR:  
**GORRONDONA & ASSOCIATES, INC.**  
7524 JACK NEWELL BLVD. SOUTH  
FORT WORTH, TEXAS 76118  
PH 817.496.1424 FAX 817.496.1768

JOB NO. CATA1701.00	DATE: 02/12/2018	SCALE: 1"=40'
DWN BY: RK	CHK BY: MP	PAGE 2 OF 2