

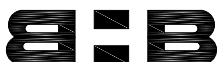
LOCATION MAP



PROJECT LOCATION



GRAPHIC SCALE: NOT TO SCALE



BAIRD, HAMPTON & BROWN, INC.
ENGINEERING & SURVEYING

6300 Ridglea Place, Ste 700 Fort Worth, TX 76116 Tel: 817-338-1277 Fax: 817-338-9245
TBPE Firm 000044 E-Mail: mail@bhbinc.com Web Site: www.bhbinc.com TBPLS FIRM 10011300

PROJECT:

The Sinclair Building Redevelopment
512 Main Street, Fort Worth, TX 76102

BHB PROJECT No: 2014.178.000

LOCATION MAP

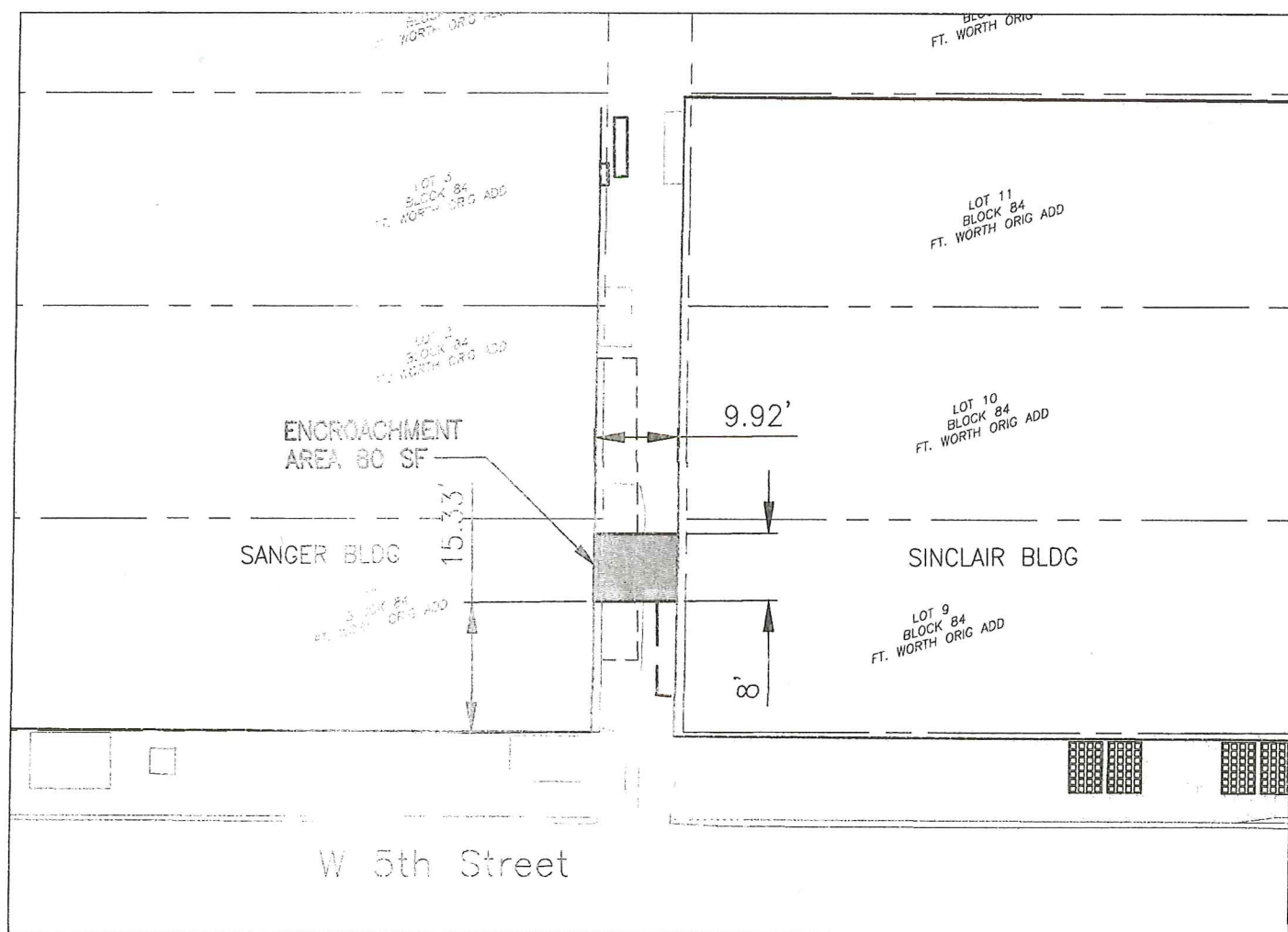
SCALE:	NOT TO SCALE
DATE:	5/12/17
DRAWN BY:	LM
CHECKED BY:	TS

SHEET

Exh C1.1

1 of 2

THE SANGER/SINCLAIR TUNNEL



ENCROACHMENT EXHIBIT		
DESCRIPTION	QUANTITY	ENCROACHMENT (SF)
TUNNEL	1	80
	TOTAL	80



B-H-B BAIRD, HAMPTON & BROWN, INC.
ENGINEERS & SURVEYING
6300 Ridglea Place, Ste 700 Fort Worth, TX 76116 Tel: 817-338-1277 Fax: 817-338-9245
TBPE Firm 000044 E-Mail: mail@bhinc.com Web Site: www.bhinc.com TPLS FIRM 10011800

PROJECT:
The Sinclair Building Redevelopment
512 Main Street, Fort Worth, TX 76102

BHB PROJECT No: 2014.178.000

ENCROACHMENT EXHIBIT (TUNNEL)

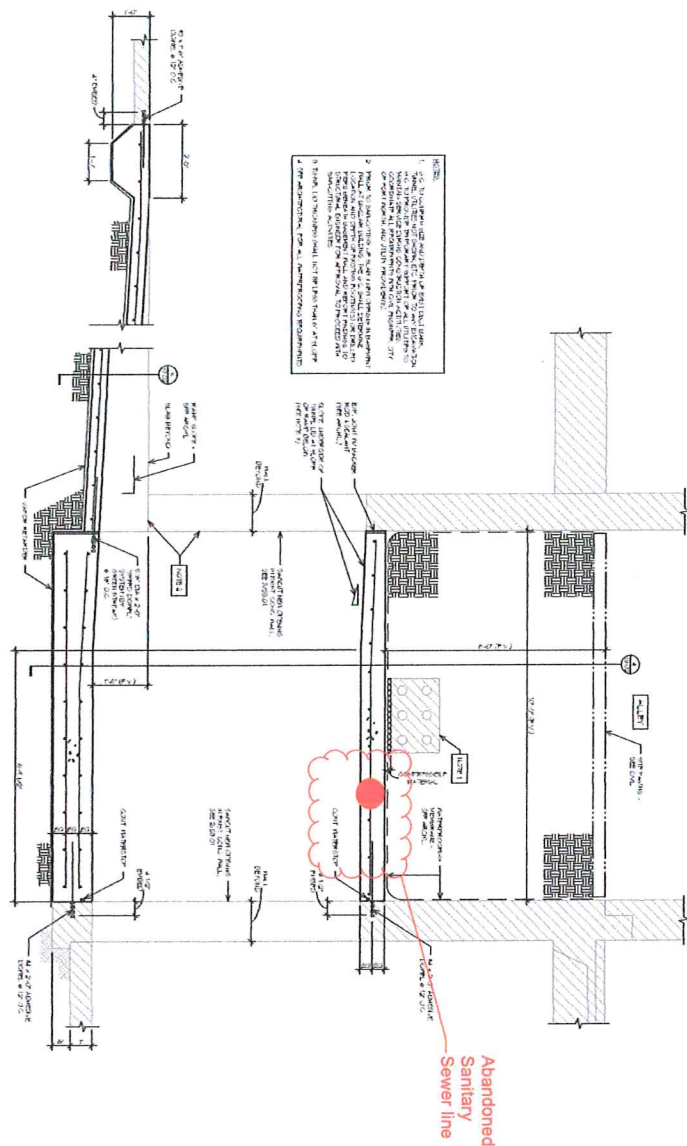
SCALE: 1" = 20'-0"
DATE: 5/12/17
DRAWN BY: LM
CHECKED BY: TS

SHEET

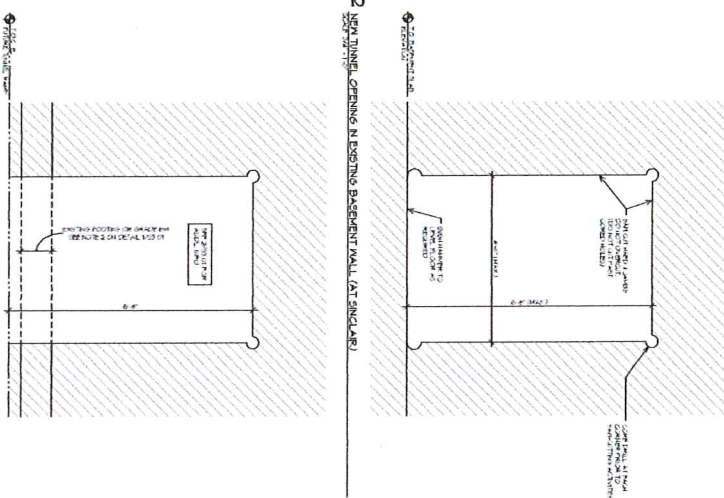
Exh C1.2

2 of 2

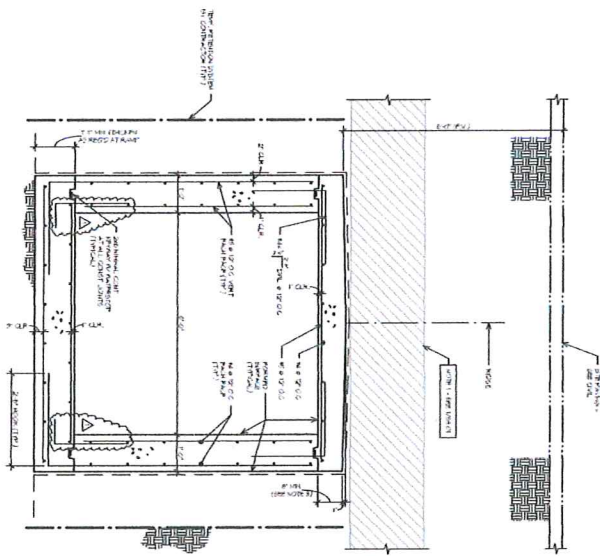
SECTION
DATE



3 NEW TUNNEL OPENING IN EXISTING BASEMENT WALL (AT SANGER)
PAGE 124 - 125



4 NEW TUNNEL SECTION
SCALE 2" = 1'-0"



5 RAMP SECTION AT SANDSPR
SCALE 3/4" = 1'-0"

