

LOCATION MAP



**PROJECT
LOCATION**



GRAPHIC SCALE: NOT TO SCALE



BAIRD, HAMPTON & BROWN, INC.
ENGINEERING & SURVEYING

6300 Ridglea Place, Ste 700 Fort Worth, TX 76116 Tel: 817-338-1277 Fax: 817-338-9245
TBPE Firm 000044 E-Mail: mail@bhinc.com Web Site: www.bhbinc.com TBPLS FIRM 10011300

PROJECT:

The Sinclair Building Redevelopment
512 Main Street, Fort Worth, TX 76102

BHB PROJECT No: 2014.178.000

LOCATION MAP

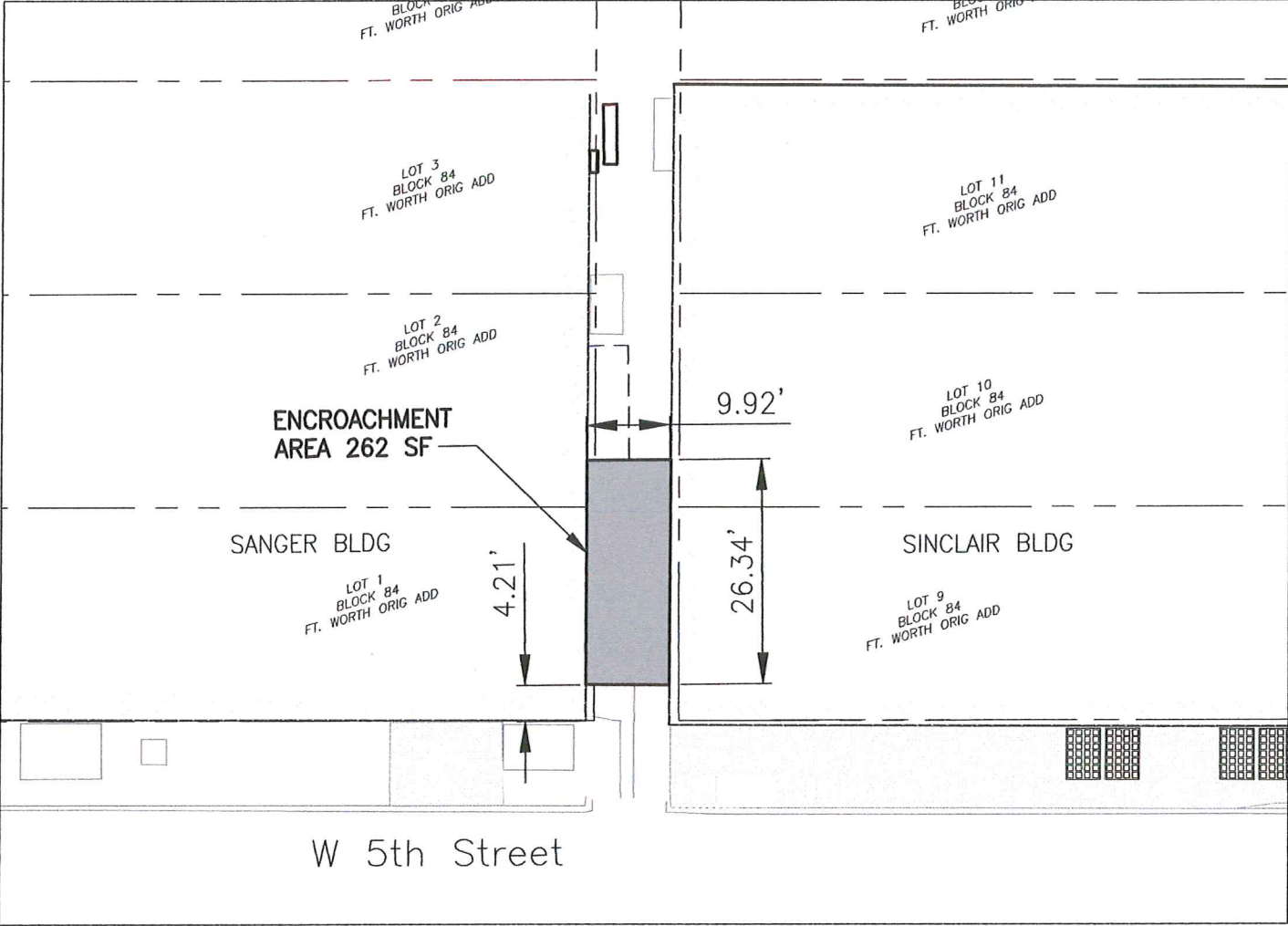
SCALE:	NOT TO SCALE
DATE:	5/12/17
DRAWN BY:	LM
CHECKED BY:	TS

SHEET

Exh C1.1

1 of 2

THE SANGER/SINCLAIR SKYBRIDGE



ENCROACHMENT
AREA 262 SF

SANGER BLDG

SINCLAIR BLDG

W 5th Street

ENCROACHMENT EXHIBIT		
DESCRIPTION	QUANTITY	ENCROACHMENT (SF)
SKYBRIDGE	1	262
TOTAL =		262



B B BAIRD, HAMPTON & BROWN, INC.
ENGINEERING & SURVEYING
6300 Ridglea Place, Ste 700 Fort Worth, TX 76116 Tel: 817-338-1277 Fax: 817-338-9245
TBPE Firm 000044 E-Mail: mail@bhinc.com Web Site: www.bhinc.com TBPLS FIRM 10011300

PROJECT:
The Sinclair Building Redevelopment
512 Main Street, Fort Worth, TX 76102
BHB PROJECT No: 2014.178.000

ENCROACHMENT EXHIBIT (SKYBRIDGE)		SHEET
SCALE:	1" = 20'-0"	Exh C1.2 2 of 2
DATE:	5/12/17	
DRAWN BY:	LM	
CHECKED BY:	TS	

