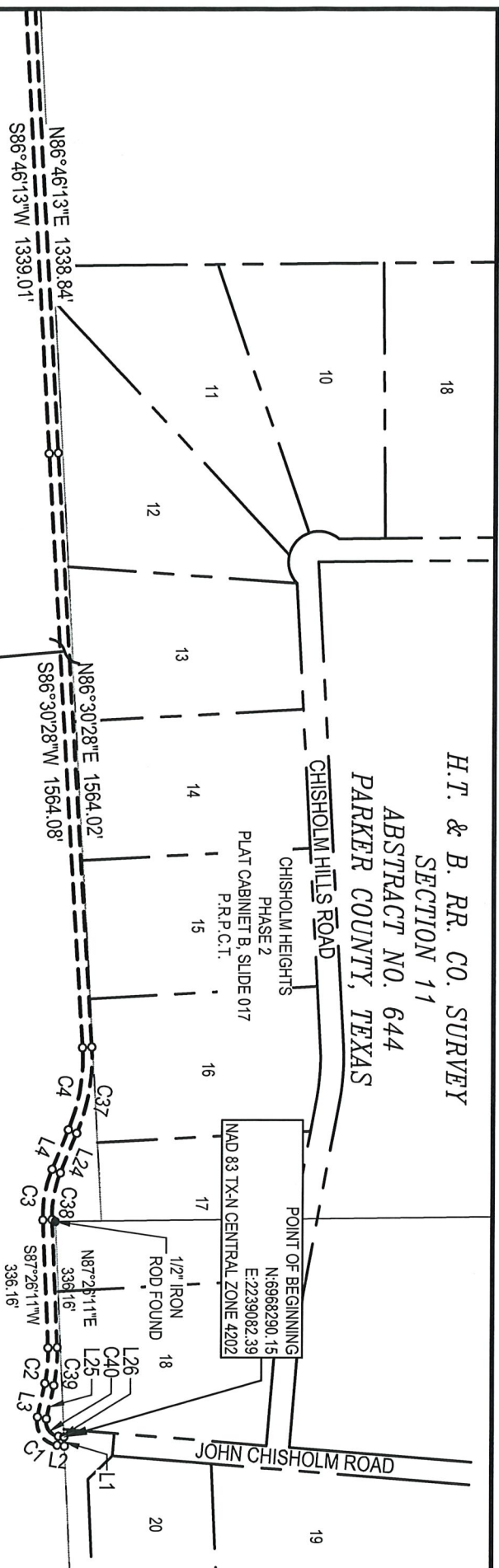


H.T. & B. RR. CO. SURVEY  
SECTION 11  
ABSTRACT NO. 644  
PARKER COUNTY, TEXAS



24' WIDE TEMPORARY  
CONSTRUCTION ACCESS EASEMENT  
6.57 ACRES  
(286,461 SQ. FT.)

J.M. RIGGS SURVEY  
ABSTRACT NO. 2616  
PARKER COUNTY, TEXAS  
J. E. BEGGS  
VOLUME 209, PAGE 297  
D.R.P.C.T.

H.T. & B. RR. CO. SURVEY  
SECTION 9  
ABSTRACT NO. 645  
PARKER COUNTY, TEXAS



**Barron-Stark-Swift**  
Consulting Engineers  
Together

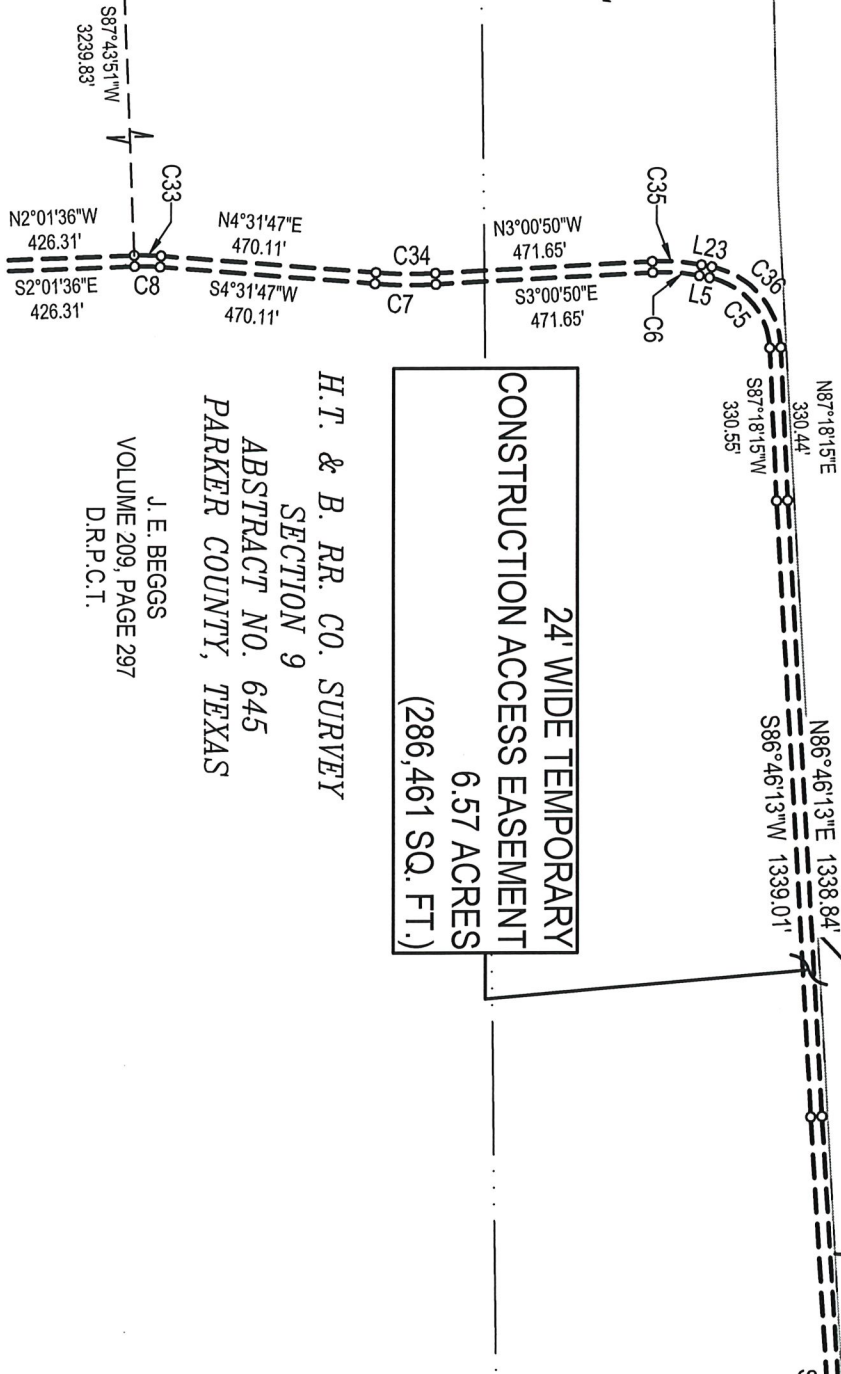
6221 Southwest Boulevard, Suite 100  
Fort Worth, Texas 76132  
(O) 817.231.8100 (F) 817.231.8144  
Texas Registered Engineering Firm F-10998  
Texas Registered Survey Firm F-10158800  
www.barronstark.com

Exhibit A  
Twenty Four (24) Wide Temporary Construction Access Easement Situated in the  
J.M. RIGGS SURVEY, ABSTRACT No. 2616;  
H.T. & B. RR. CO. SURVEY, SECTION 7, ABSTRACT No. 646  
and the  
E. GILLIS SURVEY, SECTION 8, ABSTRACT No. 2492  
Parker County, Texas

PROJECT No.	323-9392
DATE:	07/03/17

WILLOW PARK RANCH, LTD  
VOLUME 1957, PAGE 1133  
R.R.P.C.T.

J.M. RIGGS SURVEY  
ABSTRACT NO. 2616  
PARKER COUNTY, TEXAS



24' WIDE TEMPORARY  
CONSTRUCTION ACCESS EASEMENT  
6.57 ACRES  
(286,461 SQ. FT.)

H.T. & B. RR. CO. SURVEY  
SECTION 9  
ABSTRACT NO. 645  
PARKER COUNTY, TEXAS

J. E. BEGGS  
VOLUME 209, PAGE 297  
D.R.P.C.T.



GRAPHIC SCALE  
1"=400'  
0 200 400



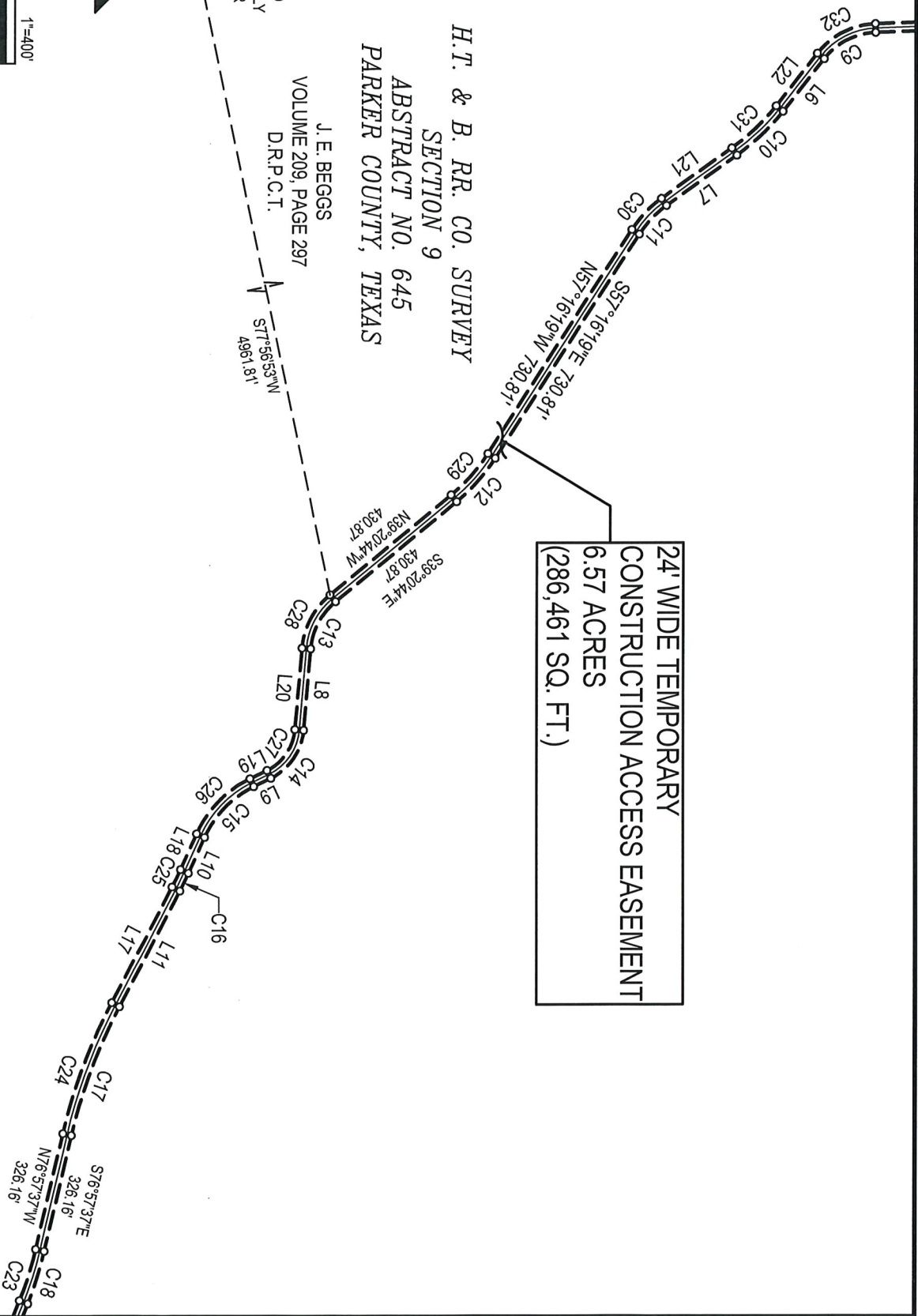
**Barron-Stark-Swift**  
Consulting Engineers  
Together

6221 Southwest Boulevard, Suite 100  
Fort Worth, Texas 76132  
(O) 817.231.8100 (F) 817.231.8144  
Texas Registered Engineering Firm F-10998  
Texas Registered Survey Firm F-10158800  
www.barronstark.com

Exhibit A  
Twenty Four (24) Wide Temporary Construction Access Easement Situated in the  
J.M. RIGGS SURVEY, ABSTRACT No. 2616;  
H.T. & B. RR. CO. SURVEY, SECTION 7, ABSTRACT No. 646  
and the  
E. GILLIS SURVEY, SECTION 8, ABSTRACT No. 2492  
Parker County, Texas

PROJECT No. 323-9392  
DATE: 07/03/17

SHEET  
2 of 10



24' WIDE TEMPORARY  
CONSTRUCTION ACCESS EASEMENT  
6.57 ACRES  
(286,461 SQ. FT.)

H.T. & B. RR. CO. SURVEY  
SECTION 9  
ABSTRACT NO. 645  
PARKER COUNTY, TEXAS

J. E. BEGGS  
VOLUME 209, PAGE 297  
D.R.P.C.T.

38' IRON ROD FOUND  
AT THE MOST WESTERLY  
SOUTHWEST CORNER  
BEGGS TRACT



**Barron-Stark-Swift**  
Consulting Engineers  
Together.

6221 Southwest Boulevard, Suite 100  
Fort Worth, Texas 76132  
(O) 817.231.8100 (F) 817.231.8144  
Texas Registered Engineering Firm F-10998  
Texas Registered Survey Firm F-10158800  
www.barronstark.com

Exhibit A  
Twenty Four (24) Wide Temporary Construction Access Easement Situated in the  
J.M. RIGGS SURVEY, ABSTRACT No. 2616;  
H.T. & B. RR. CO. SURVEY, SECTION 7, ABSTRACT No. 646  
and the  
E. GILLIS SURVEY, SECTION 8, ABSTRACT No. 2492  
Parker County, Texas

PROJECT No. 323-9392  
DATE: 07/03/17

SHEET  
3 of 10

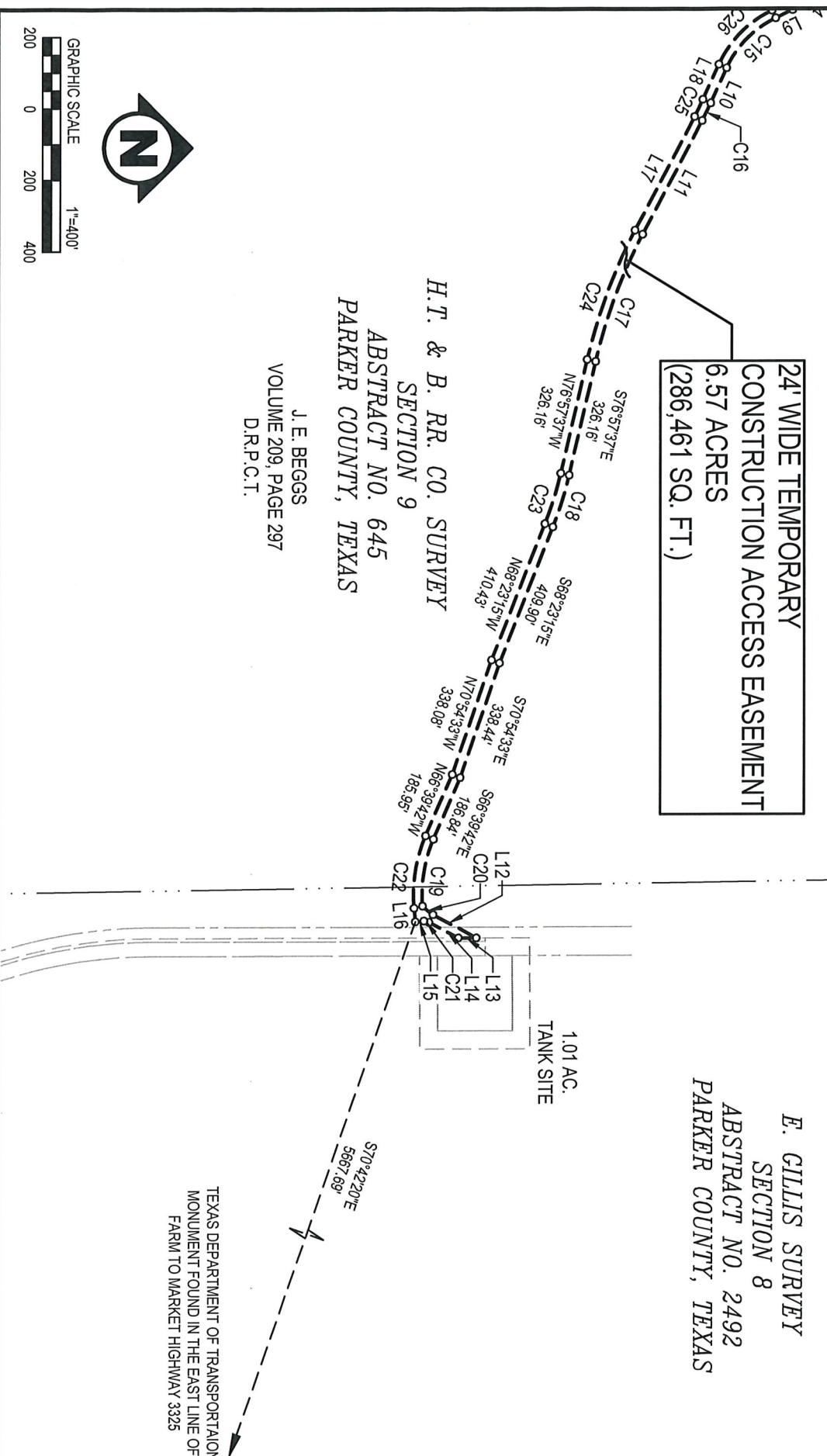
**24' WIDE TEMPORARY  
CONSTRUCTION ACCESS EASEMENT**  
6.57 ACRES  
(286,461 SQ. FT.)

**E. GILLIS SURVEY  
SECTION 8  
ABSTRACT NO. 2492  
PARKER COUNTY, TEXAS**

**H.T. & B. RR. CO. SURVEY  
SECTION 9  
ABSTRACT NO. 645  
PARKER COUNTY, TEXAS**

J. E. BEGGS  
VOLUME 209, PAGE 297  
D.R.P.C.T.

TEXAS DEPARTMENT OF TRANSPORTATION  
MONUMENT FOUND IN THE EAST LINE OF  
FARM TO MARKET HIGHWAY 3325



**Barron-Stark-Swift**

Consulting Engineers  
Together.

6221 Southwest Boulevard, Suite 100  
Fort Worth, Texas 76132  
(O) 817.231.8100 (F) 817.231.8144  
Texas Registered Engineering Firm F-10998  
Texas Registered Survey Firm F-10158800  
www.barronstark.com

Exhibit A  
Twenty Four (24) Wide Temporary Construction Access Easement Situated in the  
J.M. RIGGS SURVEY, ABSTRACT No. 2616;  
H.T. & B. RR. CO. SURVEY, SECTION 7, ABSTRACT No. 646  
and the  
E. GILLIS SURVEY, SECTION 8, ABSTRACT No. 2492  
Parker County, Texas

PROJECT No. 323-9392  
DATE: 07/03/17

SHEET  
**4 of 10**

LINE TABLE		
LINE No.	LENGTH	BEARING
L1	24.39	N87°23'27"E
L2	19.55	S07°41'43"W
L3	90.58	N77°43'18"W
L4	112.93	N67°31'49"W
L5	22.87	S11°15'25"W
L6	182.46	S51°48'11"E
L7	237.64	S35°32'29"E
L8	224.23	S85°01'24"E
L9	52.32	S25°54'06"E
L10	108.19	S65°28'30"E
L11	358.89	S62°23'45"E
L12	137.42	N28°06'04"E
L13	50.87	S00°03'00"E

LINE TABLE		
LINE No.	LENGTH	BEARING
L14	92.56	S28°06'04"W
L15	24.00	S05°22'14"E
L16	38.41	S84°37'46"W
L17	358.89	N62°23'45"W
L18	108.19	N65°28'30"W
L19	52.32	N25°54'06"W
L20	224.23	N85°01'24"W
L21	237.64	N35°32'29"W
L22	182.46	N51°48'11"W
L23	22.87	N11°15'25"E
L24	112.93	S67°31'49"E
L25	90.58	S77°43'18"E
L26	15.19	N07°41'43"E

Exhibit A

Twenty Four (24) Wide Temporary Construction Access Easement Situated in the  
J.M. RIGGS SURVEY, ABSTRACT No. 2616; H.T. & B. RR. CO. SURVEY, SECTION 7, ABSTRACT No. 646  
and the  
E. GILLIS SURVEY, SECTION 8, ABSTRACT No. 2492  
Parker County, Texas

PROJECT No. 323-9392

DATE: 07/03/17

SHEET

5 of 10



6221 Southwest Boulevard, Suite 100  
Fort Worth, Texas 76132  
(O) 817.231.8100 (F) 817.231.8144  
Texas Registered Engineering Firm F-10998  
Texas Registered Survey Firm F-1015880  
www.barronstark.com

## CURVE TABLE

CURVE No.	LENGTH	RADIUS	DELTA	CHORD DIRECTION	CHORD LENGTH
C1	102.35	62.00	94°34'58"	S54° 59' 12"W	91.12
C2	94.03	363.00	14°50'31"	N85° 08' 34"W	93.77
C3	136.32	312.00	25°02'00"	N80° 02' 49"W	135.24
C4	221.12	488.00	25°57'42"	N80° 30' 40"W	219.24
C5	216.35	163.00	76°02'50"	S49° 16' 50"W	200.81
C6	102.87	413.00	14°16'15"	S4° 07' 18"W	102.60
C7	133.24	1012.00	7°32'37"	S0° 45' 28"W	133.14
C8	55.84	488.00	6°33'23"	S1° 15' 05"W	55.81
C9	163.33	188.00	49°46'34"	S26° 54' 53"E	158.24
C10	173.70	612.00	16°15'41"	S43° 40' 20"E	173.11
C11	109.23	288.00	21°43'50"	S46° 24' 24"E	108.58
C12	160.19	512.00	17°55'35"	S48° 18' 31"E	159.54
C13	149.88	188.00	45°40'40"	S62° 11' 04"E	145.94
C14	167.16	162.00	59°07'18"	S55° 27' 45"E	159.84
C15	198.92	288.00	39°34'23"	S45° 41' 18"E	194.99
C16	54.38	1012.00	3°04'45"	S63° 56' 08"E	54.38
C17	378.25	1488.00	14°33'52"	S69° 40' 41"E	377.23
C18	151.42	1012.00	8°34'22"	S72° 40' 26"E	151.28
C19	191.03	388.00	28°12'32"	S80° 45' 58"E	189.10
C20	38.08	240.09	9°05'19"	N39° 20' 39"E	38.04

CURVE TABLE					
CURVE No.	LENGTH	RADIUS	DELTA	CHORD DIRECTION	CHORD LENGTH
C21	14.81	33.75	25°07'54"	S14° 29' 24"W	14.69
C22	206.44	412.00	28°42'31"	N81° 00' 58"W	204.28
C23	147.83	988.00	8°34'22"	N72° 40' 26"W	147.69
C24	384.35	1512.00	14°33'52"	N69° 40' 41"W	383.31
C25	53.09	988.00	3°04'45"	N63° 56' 08"W	53.09
C26	215.49	312.00	39°34'23"	N45° 41' 18"W	211.24
C27	142.40	138.00	59°07'18"	N55° 27' 45"W	136.16
C28	169.01	212.00	45°40'40"	N62° 11' 04"W	164.57
C29	152.68	488.00	17°55'35"	N48° 18' 31"W	152.06
C30	118.33	312.00	21°43'50"	N46° 24' 24"W	117.62
C31	166.88	588.00	16°15'41"	N43° 40' 20"W	166.32
C32	184.18	212.00	49°46'34"	N26° 54' 53"W	178.44
C33	58.59	512.00	6°33'23"	N1° 15' 05"E	58.56
C34	130.08	988.00	7°32'37"	N0° 45' 28"E	129.99
C35	108.85	437.00	14°16'15"	N4° 07' 18"E	108.56
C36	248.20	187.00	76°02'50"	N49° 16' 50"E	230.38
C37	232.00	512.00	25°57'42"	S80° 30' 40"E	230.02
C38	125.83	288.00	25°02'00"	S80° 02' 49"E	124.83
C39	100.25	387.00	14°50'31"	S85° 08' 34"E	99.97
C40	62.73	38.00	94°34'58"	N54° 59' 12"E	55.85

LEGAL DESCRIPTION  
A TWENTY FOUR (24) FOOT WIDE TEMPORARY CONSTRUCTION ACCESS EASEMENT

BEING a Twenty Four (24) Foot Wide Temporary Construction Access Easement situated in the J.M. RIGGS SURVEY, Abstract No. 2616, H.T. & B. RR. CO. SURVEY, SECTION 7, ABSTRACT No. 646 and the E. GILLIS SURVEY, SECTION 8, ABSTRACT No. 2492, Parker County, Texas and being over, under and across that certain tract of land described in deed to J.E. Beggs, recorded in Volume 209, Page 297, Deed Records, Parker County, Texas, said Temporary Construction Easement being more particularly described as follows:

Beginning at a point in the most north line of said Beggs Tract, being N 87°23'27" E, a distance of 20.53 feet from the southeast corner of Lot 18, CHISHOLM HEIGHTS, PHASE 2, an Addition to Parker County, Texas, according to the Plat recorded in Plat Cabinet B, Slide 017, Plat Records, Parker County, Texas, said BEGINNING POINT having a NAD 83, Texas North Central, Zone 4202 coordinate value of N:6968290.155 and whose E:2239082.390, for reference;

THENCE N 87°23'27" E, a distance of 24.39 feet to a point;  
THENCE S 7°41'43" W, a distance of 19.55 feet to a point;  
THENCE along a curve to the RIGHT, having a radius of 62.00 feet, a delta angle of 94°34'58", and whose long chord bears S 54°59'12" W, a distance of 91.12 feet;  
THENCE N 77°43'18" W, a distance of 90.58 feet to a point;  
THENCE along a curve to the LEFT, having a radius of 363.00 feet, a delta angle of 14°50'31", and whose long chord bears N 85°08'34" W, a distance of 93.77 feet;  
THENCE S 87°26'11" W, a distance of 336.16 feet to a point;  
THENCE along a curve to the RIGHT, having a radius of 312.00, a delta angle of 25°02'00", and whose long chord bears N 80°02'49" W, a distance of 135.24 feet;  
THENCE N 67°31'49" W, a distance of 112.93 feet to a point ;  
THENCE along a curve to the LEFT, having a radius of 488.00 feet, a delta angle of 25°57'42", and whose long chord bears N 80°30'40" W, a distance of 219.24 feet;  
THENCE S 86°30'28" W, a distance of 1564.08 feet to a point ;  
THENCE S 86°46'13" W a distance of 1339.01 feet to a point;  
THENCE S 87°18'15" W, a distance of 330.55 feet to a point;  
THENCE along a curve to the LEFT, having a radius of 163.00 feet, a delta angle of 76°02'50", and whose long chord bears S 49°16'50" W, a distance of 200.81 feet;  
THENCE S 11°15'25" W, a distance of 22.87 feet to a point;  
THENCE along a curve to the LEFT, having a radius of 413.00 feet, a delta angle of 14°16'15", and whose long chord bears S 4°07'18" W a distance of 102.60 feet to a point;  
THENCE S 3°00'50" E, a distance of 471.65 feet to a point;  
THENCE along a curve to the RIGHT, having a radius of 1012.00 feet, a delta angle of 7°32'37", and whose long chord bears S 0°45'28" W, a distance of 133.14 feet to a point;  
THENCE S 4°31'47" W, a distance of 470.11 feet to a point;  
THENCE along a curve to the LEFT, having a radius of 488.00 feet, a delta angle of 6°33'23", and whose long chord bears S 1°15'05" W, a distance of 55.81 feet;  
THENCE S 2°01'36" E, a distance of 426.31 feet to a point;  
THENCE along a curve to the LEFT, having a radius of 188.00 feet, a delta angle of 49°46'34", and whose long chord bears S 26°54'53" E, a distance of 158.24 feet;  
THENCE S 51°48'11" E, a distance of 182.46 feet to a point;  
THENCE along a curve to the RIGHT, having a radius of 612.00 feet, a delta angle of 16°15'41", and whose long chord bears S 43°40'20" E, a distance of 173.11 feet;  
THENCE S 35°32'29" E, a distance of 237.64 feet to a point;  
THENCE along a curve to the LEFT, having a radius of 288.00 feet, a delta angle of 21°43'50", and whose long chord bears S 46°24'24" E, a distance of 108.58 feet;  
THENCE S 57°16'19" E, a distance of 730.81 feet to a point;  
THENCE along a curve to the RIGHT, having a radius of 512.00 feet, a delta angle of 17°55'35", and whose long chord bears S 48°18'31" E, a distance of 159.54 feet;  
THENCE S 39°20'44" E, a distance of 430.87 feet to a point ;  
THENCE along a curve to the LEFT, having a radius of 188.00 feet, a delta angle of 45°40'40", and whose long chord bears S 62°11'04" E, a distance of 145.94 feet;  
THENCE S 85°01'24" E, a distance of 224.23 feet to a point;

Continued:

**B**  
**Barron-Stark-Swift**  
Consulting Engineers  
REGISTERED

6221 Southwest Boulevard, Suite 100  
Fort Worth, Texas 76132  
(O) 817.231.8100 (F) 817.231.8144  
Texas Registered Engineering Firm F-10998  
Texas Registered Survey Firm F-10158800  
www.barronstark.com

Exhibit A  
Twenty Four (24) Wide Temporary Construction Access Easement Situated in the  
J.M. RIGGS SURVEY, ABSTRACT No. 2616; H.T. & B. RR. CO. SURVEY, SECTION 7, ABSTRACT No. 646  
and the  
E. GILLIS SURVEY, SECTION 8, ABSTRACT No. 2492  
Parker County, Texas

PROJECT No. 323-9392

DATE: 07/03/17

SHEET

8 of 10

LEGAL DESCRIPTION  
A TWENTY FOUR (24) FOOT WIDE TEMPORARY CONSTRUCTION ACCESS EASEMENT

Continued:

THENCE along a curve to the RIGHT, having a radius of 162.00 feet, a delta angle of 59°07'18", and whose long chord bears S 55°27'45" E, a distance of 159.84 feet;  
THENCE S 25°54'06" E, a distance of 52.32 feet to a point;  
THENCE along a curve to the LEFT, having a radius of 288.00 feet, a delta angle of 39°34'23", and whose long chord bears S 45°41'18" E, a distance of 194.99 feet;  
THENCE S 65°28'30" E, a distance of 108.19 feet to a point;  
THENCE along a curve to the RIGHT, having a radius of 1012.00 feet, a delta angle of 3°04'45", and whose long chord bears S 63°56'08" E, a distance of 54.38 feet;  
THENCE S 62°23'45" E, a distance of 358.89 feet to a point;  
THENCE along a curve to the LEFT, having a radius of 1488.00 feet, a delta angle of 14°33'52", and whose long chord bears S 69°40'41" E, a distance of 377.23 feet;  
THENCE S 76°57'37" E, a distance of 326.16 feet to a point;  
THENCE along a curve to the RIGHT, having a radius of 1012.00 feet, a delta angle of 8°34'22", and whose long chord bears S 72°40'26" E, a distance of 151.28 feet;  
THENCE S 68°23'15" E, a distance of 409.90 feet to a point;  
THENCE S 70°54'33" E, a distance of 338.44 feet to a point;  
THENCE S 66°39'42" E, a distance of 186.84 feet to a point;  
THENCE along a curve to the LEFT, having a radius of 388.00 feet, a delta angle of 28°12'32", and whose long chord bears S 80°45'58" E, a distance of 189.10 feet;  
THENCE along a curve to the LEFT, having a radius of 240.09 feet, a delta angle of 9°05'19", and whose long chord bears N 39°20'39" E, a distance of 38.04 feet;  
THENCE N 28°06'04" E, a distance of 137.42 feet to a point;  
THENCE S 00°03'00" E, a distance of 50.87 feet to a point;  
THENCE S 28°06'04" W, a distance of 92.56 feet to a point;  
THENCE along a curve to the LEFT, having a radius of 33.75 feet, a delta angle of 25°07'54", and whose long chord bears S 14°29'24" W, a distance of 14.69 feet;  
THENCE S 5°22'14" E, a distance of 24.00 feet to a point;  
THENCE S 84°37'46" W, a distance of 38.41 feet to a point;  
THENCE along a curve to the RIGHT, having a radius of 412.00 feet, a delta angle of 28°42'31", and whose long chord bears N 81°00'58" W, a distance of 204.28 feet;  
THENCE N 66°39'42" W, a distance of 185.95 feet to a point;  
THENCE N 70°54'33" W, a distance of 338.08 feet to a point;  
THENCE N 68°23'15" W, a distance of 410.43 feet to a point;  
THENCE along a curve to the LEFT, having a radius of 988.00 feet, a delta angle of 8°34'22", and whose long chord bears N 72°40'26" W, a distance of 147.69 feet;  
THENCE N 76°57'37" W, a distance of 326.16 feet to a point;  
THENCE along a curve to the RIGHT, having a radius of 1512.00 feet, a delta angle of 14°33'52", and whose long chord bears N 69°40'41" W, a distance of 383.31 feet;  
THENCE N 62°23'45" W, a distance of 358.89 feet to a point;  
THENCE along a curve to the LEFT, having a radius of 988.00 feet, a delta angle of 3°04'45", and whose long chord bears N 63°56'08" W, a distance of 53.09 feet;  
THENCE N 65°28'30" W, a distance of 108.19 feet to a point;  
THENCE along a curve to the RIGHT, having a radius of 312.00 feet, a delta angle of 39°34'23", and whose long chord bears N 45°41'18" W, a distance of 211.24 feet;  
THENCE N 25°54'06" W, a distance of 52.32 feet to a point;  
THENCE along a curve to the LEFT, having a radius of 138.00 feet, a delta angle of 59°07' 18", and whose long chord bears N 55°27'45" W, a distance of 136.16 feet;  
THENCE N 85°01'24" W, a distance of 224.23 feet to a point;  
THENCE along a curve to the RIGHT, having a radius of 212.00 feet, a delta angle of 45°40'40", and whose long chord bears N 62°11'04" W, a distance of 164.57 feet;  
THENCE N 39°20'44" W, a distance of 430.87 feet to a point;  
THENCE along a curve to the LEFT, having a radius of 488.00 feet, a delta angle of 17°55'35", and whose long chord bears N 48°18'31" W, a distance of 152.06 feet;

Continued:



6221 Southwest Boulevard, Suite 100  
Fort Worth, Texas 76132  
(O) 817.231.8100 (F) 817.231.8144  
Texas Registered Engineering Firm F-10998  
Texas Registered Survey Firm F-10158800  
www.barronstark.com

Exhibit A  
Twenty Four (24) Wide Temporary Construction Access Easement Situated in the  
J.M. RIGGS SURVEY, ABSTRACT No. 2616; H.T. & B. RR. CO. SURVEY, SECTION 7, ABSTRACT No. 646  
and the  
E. GILLIS SURVEY, SECTION 8, ABSTRACT No. 2492  
Parker County, Texas

PROJECT No. 323-9392

DATE: 07/03/17

SHEET

9 of 10

LEGAL DESCRIPTION  
A TWENTY FOUR (24) FOOT WIDE TEMPORARY CONSTRUCTION ACCESS EASEMENT

Continued:

THENCE N 57°16'19" W, a distance of 730.81 feet to a point;  
THENCE along a curve to the RIGHT, having a radius of 312.00 feet, a delta angle of 21°43'50", and whose long chord bears N 46°24'24" W, a distance of 117.62 feet;  
THENCE N 35°32'29" W, a distance of 237.64 feet to a point;  
THENCE along a curve to the LEFT, having a radius of 588.00 feet, a delta angle of 16°15'41", and whose long chord bears N 43°40'20" W, a distance of 166.32 feet;  
THENCE N 51°48'11" W, a distance of 182.46 feet to a point;  
THENCE along a curve to the RIGHT, having a radius of 212.00 feet, a delta angle of 49°46'34", and whose long chord bears N 26°54'53" W, a distance of 178.44 feet;  
THENCE N 2°01'36" W, a distance of 426.31 feet to a point;  
THENCE along a curve to the RIGHT, having a radius of 512.00 feet, a delta angle of 6°33'23", and whose long chord bears N 1°15'05" E, a distance of 58.56 feet;  
THENCE N 4°31'47" E, a distance of 470.11 feet to a point;  
THENCE along a curve to the LEFT, having a radius of 988.00 feet, a delta angle of 7°32'37", and whose long chord bears N 0°45'28" E, a distance of 129.99 feet;  
THENCE N 3°00'50" W, a distance of 471.65 feet to a point;  
THENCE along a curve to the RIGHT, having a radius of 437.00 feet, a delta angle of 14°16'15", and whose long chord bears N 4°07'18" E, a distance of 108.56 feet;  
THENCE N 11°15'25" E, a distance of 22.87 feet to a point;  
THENCE along a curve to the RIGHT, having a radius of 187.00 feet, a delta angle of 76°02' 50", and whose long chord bears N 49°16'50" E, a distance of 230.38 feet;  
THENCE N 87°18'15" E, a distance of 330.44 feet to a point;  
THENCE N 86°46'13" E, a distance of 1338.84 feet to a point;  
THENCE N 86°30'28" E, a distance of 1564.02 feet to a point;  
THENCE along a curve to the RIGHT, having a radius of 512.00 feet, a delta angle of 25°57'42", and whose long chord bears S 80°30'40" E, a distance of 230.02 feet;  
THENCE S 67°31'49" E, a distance of 112.93 feet to a point;  
THENCE along a curve to the LEFT, having a radius of 288.00 feet, a delta angle of 25°02'00", and whose long chord bears S 80°02'49" E, a distance of 124.83 feet;  
THENCE N 87°26'11" E, a distance of 336.16 feet to a point;  
THENCE along a curve to the RIGHT, having a radius of 387.00 feet, a delta angle of 14°50'31", and whose long chord bears S 85°08'34" E, a distance of 99.97 feet;  
THENCE S 77°43'18" E, a distance of 90.58 feet to a point;  
THENCE along a curve to the LEFT, having a radius of 38.00 feet, a delta angle of 94°34'58", and whose long chord bears N 54°59'12" E, a distance of 55.85 feet;  
THENCE N 7°41'43" E, a distance of 15.19 feet to the POINT OF BEGINNING and containing 6.57 acres (286,461 square feet) of land, more or less.



*James Curtis Yarger*  
JAMES CURTIS YARGER  
REGISTERED PROFESSIONAL LAND SURVEYOR  
STATE OF TEXAS #5854  
SURVEYED ON THE GROUND 06-29-17

NOTES:

1.) BEARINGS & COORDINATES SHOWN HEREON ARE REFERENCED TO THE TEXAS STATE PLANE COORDINATE SYSTEM, N.A.D. 83 DATUM (TEXAS NORTH CENTRAL ZONE 4202) DERIVED FROM RESOLVED OPUS SOLUTIONS.

**B**  
**Barron-Stark-Swift**  
Consulting Engineers  
Register

6221 Southwest Boulevard, Suite 100  
Fort Worth, Texas 76132  
(O) 817.231.8100 (F) 817.231.8144  
Texas Registered Engineering Firm F-10998  
Texas Registered Survey Firm F-10158800  
www.barronstark.com

Exhibit A  
Twenty Four (24) Wide Temporary Construction Access Easement Situated in the  
J.M. RIGGS SURVEY, ABSTRACT No. 2616; H.T. & B. RR. CO. SURVEY, SECTION 7, ABSTRACT No. 646  
and the  
E. GILLIS SURVEY, SECTION 8, ABSTRACT No. 2492  
Parker County, Texas

PROJECT No. 323-9392

DATE: 07/03/17

SHEET

10 of 10