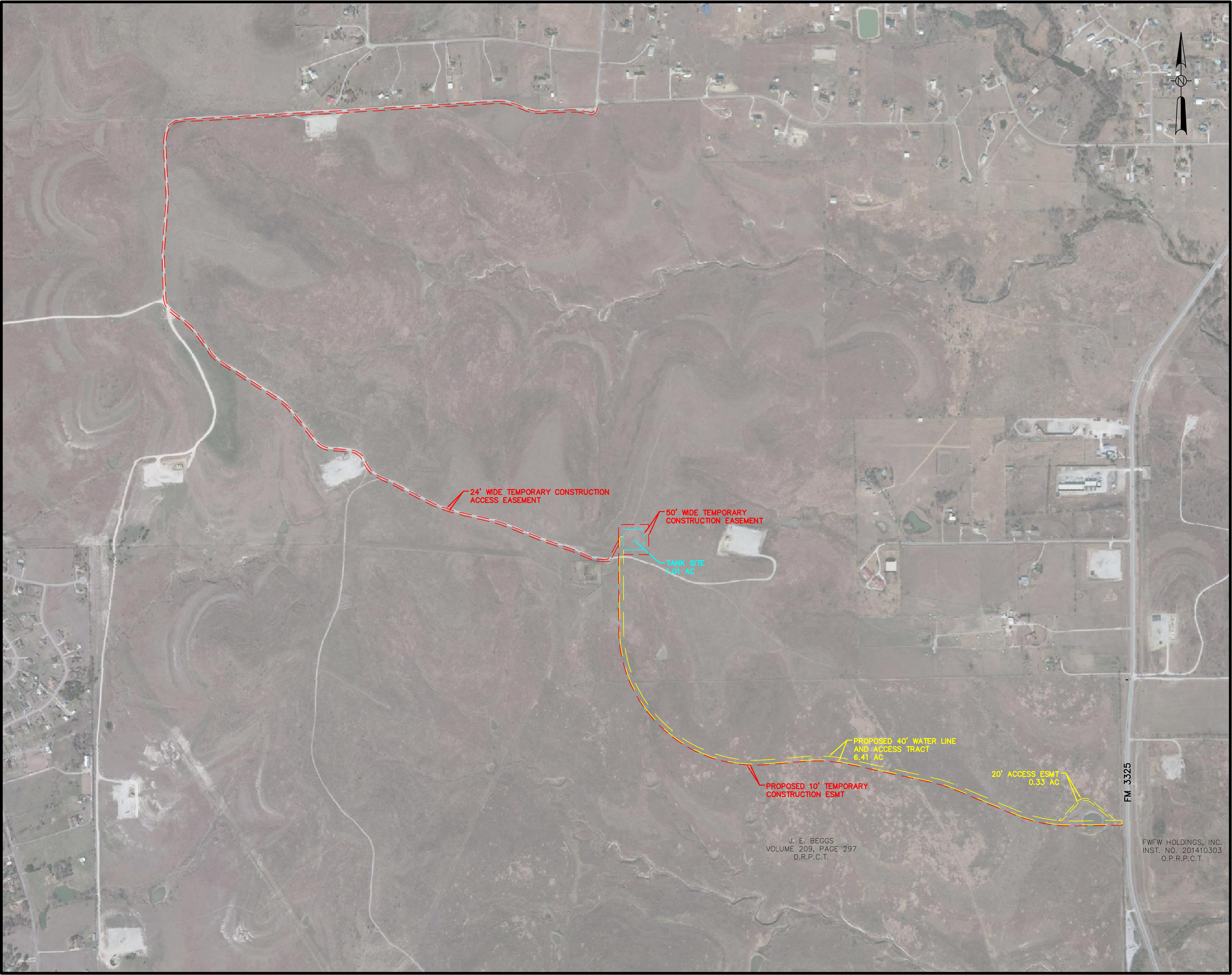


K:\FTW\_Utillities\061018164--Westside\_EST\_and\_WL\CAAD\EXHIBIT\2017-07-14\_Easement Exhibit\2018-1-10\_Easement Exhibit.dwg 1/11/18 1:22pm



NOTES

- ALL REFERENCED DETAILS SHOULD BE CITY OF FORT WORTH STANDARD DETAILS UNLESS NOTED OTHERWISE.
- THE CONTRACTOR SHALL BE RESPONSIBLE FOR LOCATING ALL UTILITIES, WHETHER PUBLIC OR PRIVATE, PRIOR TO EXCAVATION. THE INFORMATION AND DATA SHOWN WITH RESPECT TO EXISTING UNDERGROUND FACILITIES AT OR CONTIGUOUS TO THE SITE IS APPROXIMATE AND BASED ON INFORMATION FURNISHED BY THE OWNERS OF SUCH UNDERGROUND FACILITIES OR ON PHYSICAL APPURTENANCES OBSERVED IN THE FIELD. THE OWNER AND ENGINEER SHALL NOT BE RESPONSIBLE FOR THE ACCURACY OR COMPLETENESS OF ANY SUCH INFORMATION OR DATA. THE CONTRACTOR SHALL HAVE FULL RESPONSIBILITY FOR REVIEWING AND CHECKING ALL SUCH INFORMATION AND DATA, FOR LOCATING ALL UNDERGROUND FACILITIES, FOR COORDINATION OF THE WORK WITH THE OWNERS OF SUCH UNDERGROUND FACILITIES DURING CONSTRUCTION, AND FOR THE SAFETY AND PROTECTION THEREOF AND REPAIRING ANY DAMAGE THERETO RESULTING FROM THE WORK. THE COST OF ALL WILL HAVE BEEN CONSIDERED AS HAVING BEEN INCLUDED IN THE CONTRACT PRICE. THE CONTRACTOR SHALL NOTIFY ANY AFFECTED UTILITY COMPANIES OR AGENCIES IN WRITING AT LEAST 48 HOURS PRIOR TO CONSTRUCTION.

WARNING

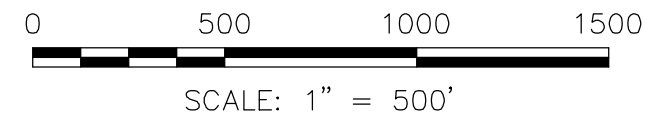
THE LOCATION AND DIMENSIONS OF EXISTING UTILITIES SHOWN ON THE PLANS ARE APPROXIMATE AND WERE OBTAINED FROM UTILITY COMPANY RECORDS. IT IS THE CONTRACTOR'S SOLE RESPONSIBILITY TO VERIFY LOCATION, DEPTH AND DIMENSION OF EXISTING UTILITIES PRIOR TO CONSTRUCTION.

WARNING! UNDERGROUND UTILITIES IN THE AREA OF CONSTRUCTION. CONTACT THE FOLLOWING OFFICES AT LEAST 48 HOURS PRIOR TO EXCAVATION AT THIS LOCATION.

DIGTESS	DIGTESS	(800) 344-8377
TOMMY WILLIAMS	AT&T/SBC	(817) 338-6013
MARK HINDS	ONCOR ELECTRIC	(940) 390-2495
JOHN CRANE	ATMOS GAS	(817) 207-2831
TRACY LEE	ENLINK MIDSTREAM	(817) 487-1560
WILL GRIFFIN	ENERVEST OPERATING LLC	(817) 441-5844
CHRIS HARDER, P.E.	CITY OF FORT WORTH	(817) 392-8293
KEVIN MOONEY	TRI-COUNTY ELECTRIC	(817) 374-9410
CITY OF FORT WORTH	WATER DEPARTMENT	(817) 871-8296

BENCHMARKS

- |   |  |
|---|--|
| 1. BM#1<br>"X" CUT ON WATER TROUGH<br>N: 6963679.99<br>E: 2238951.21<br>ELEV: 1069.44 | 4. BM#4<br>RR SPIKE SET ON PP<br>N: 6960278.40<br>E: 2244494.78<br>ELEV: 936.70  |
| 2. BM#2<br>RR SPIKE SET ON PP<br>N: 6962347.78<br>E: 2244523.49<br>ELEV: 973.65       | 5. BM#5<br>BOX CUT ON CONCRETE<br>N: 6959233.40<br>E: 2244568.61<br>ELEV: 928.11 |
| 3. BM#3<br>RR SPIKE SET ON PP<br>N: 6961140.76<br>E: 2244476.76<br>ELEV: 961.27       | 6. BM#6<br>RR SPIKE SET ON PP<br>N: 6958462.28<br>E: 2245253.66<br>ELEV: 989.64  |



REV.	COMMENTS	BY	DATE
1			
2			
3			



WESTSIDE V 16-INCH WATER MAIN

EASEMENT EXHIBIT

**Kimley»Horn**

801 Cherry St., Suite 950, Unit 11, Fort Worth, TX 76102 817-335-6511  
TBPE No. F-928

DESIGN:	DATE	SCALE	PROJECT NO.	SHEET
TWK			TPW/DOE # XXXX	
WSB	Jan		CITY PROJECT #100378	
JRT	2018		XXXX	
			XXXX	