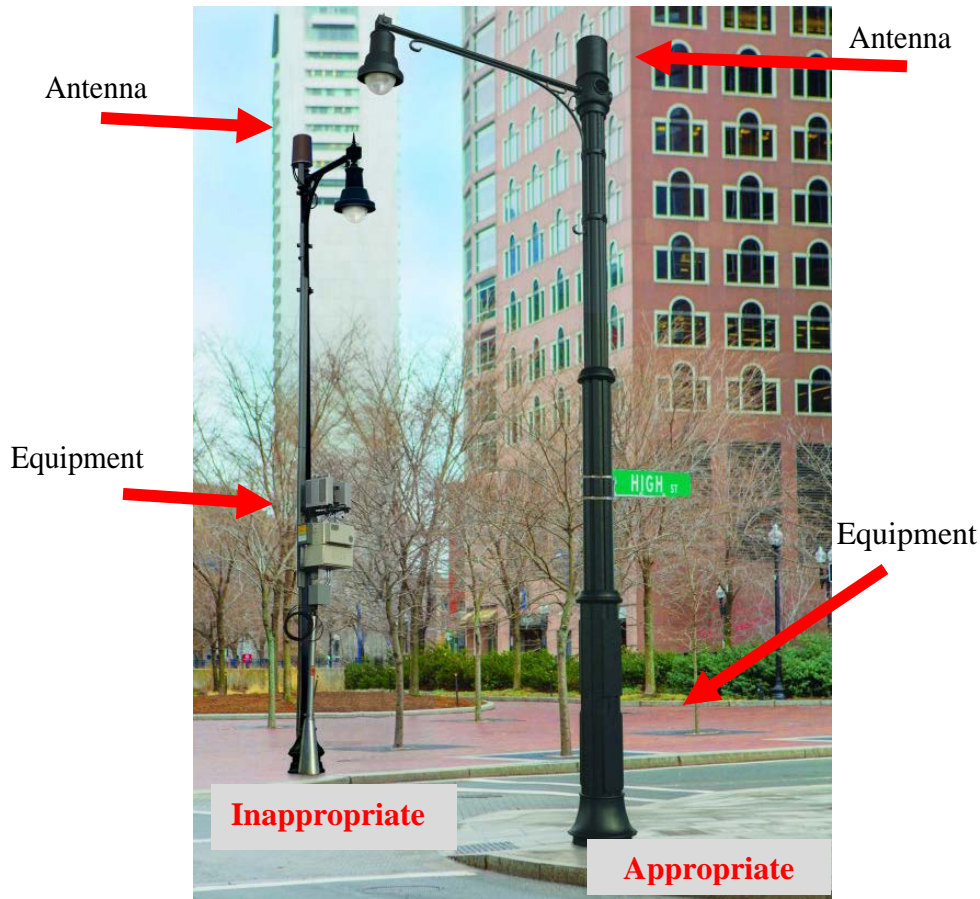


Examples of Visual Guidance from the Design Manual



The elimination (**Above**) or concealment (**Below**) of pole mounted equipment, and the equipment footprint's minimal impact on the streetscape help to create a better pedestrian experience.



Above: Excess loose cabling, decals/ stickers, and cluttered appearance of equipment cabinets are not allowed.

Below: Unique and creative design solutions are encouraged.

