







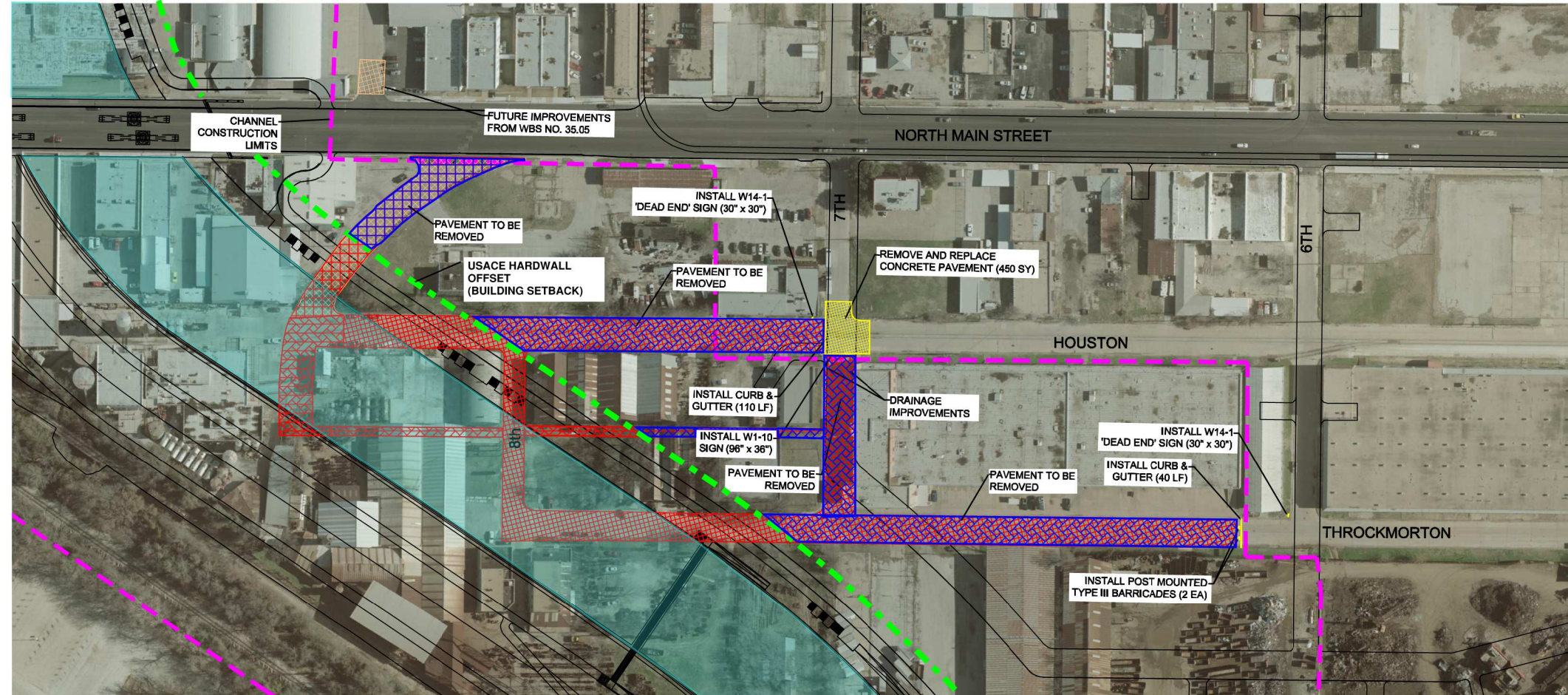
\\FTW\F01\DATA\Project\FTW_Utilities\081018052\PPP\Local_CADD\BASE\35.06_LOCAL_STREET_MODS_WBS.dwg 7/9/2008 9:15 AM

LEGEND

-  PROPOSED LOCAL STREET
-  PROPOSED STREET ROW VACATE (DEVELOPMENT REPLAT)
-  PROPOSED STREET ROW VACATE (FEDERAL FLOODWAY REPLAT)
-  CHANNEL CONSTRUCTION LIMITS
-  ADJACENT IMPROVEMENTS
-  OFFSET FROM USACE HARDWALL/BUILDING SETBACK



HORIZONTAL SCALE: 1" = 100'
FOR 11x17 PLOT, SCALE: 1" = 200'



Kimley-Horn and Associates, Inc.
 801 Cherry St., Suite 800 Ft. Worth, TX 76102
 P: 817-335-6911 F: 817-335-6070

No.	Revision	By	Date

THIS DOCUMENT IS INCOMPLETE AND IS RELEASED TEMPORARILY FOR INTERIM REVIEW ONLY. IT IS NOT INTENDED FOR CONSTRUCTION, BIDDING, OR PERMIT PURPOSES.
 CARL T. DAZEE P.E.
 SERIAL NO. 87685
 DATE: FEB. 2013

LOCAL STREET MODIFICATIONS

PART 2 CHANNEL SEGMENT B

DATE:	DESIGN:	DRAWN:	CHECKED:	KHA NO.:

TRV WBS No.
35.06