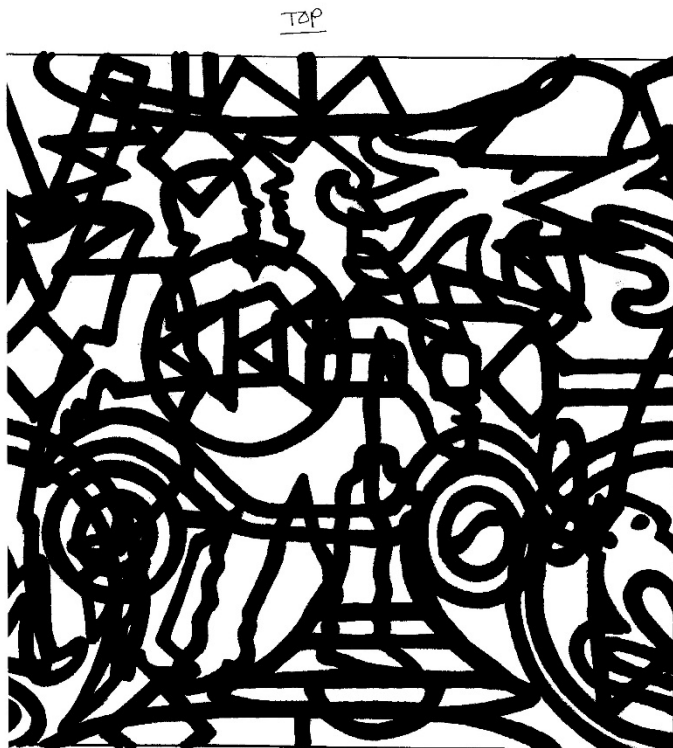


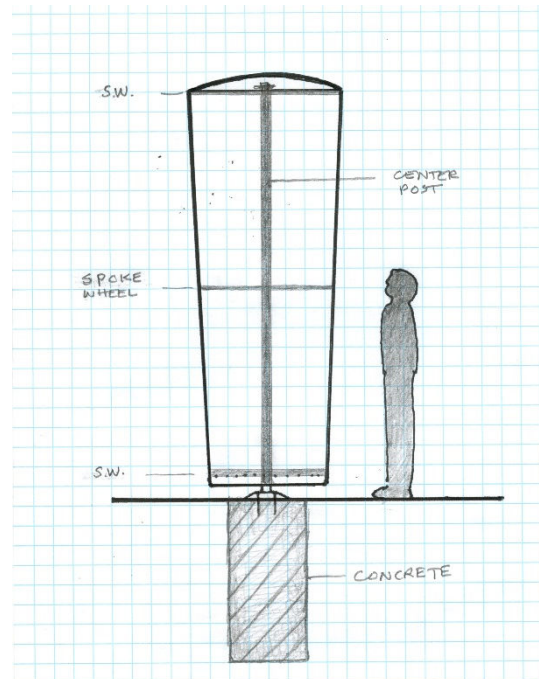
South Main Urban Village Public Art Project

Narrative Description

Artwork for the South Main Urban Village is composed of six conical forms fabricated in stainless steel and located along South Main Street on both sides of the street. These sculptures are 10 feet tall with approximately a four-foot diameter at top and a three-foot diameter at bottom, and lit from within. Linear and overlapping images found/photographed on South Main will be cut into the steel with the negative shapes removed allowing light to glow from the sculptures. These images will act as historical markers of what existed on South Main at this time. Stainless steel mesh will be backing the images to prevent pedestrians from injuries caused by sticking their heads or hands into the cones shapes as well as keeping trash out which is also the reason the top will be covered.



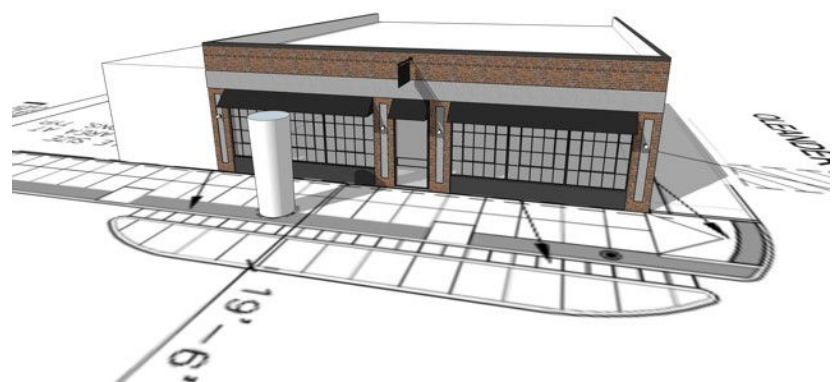
design sketch



sketch showing scale of work



Model of artwork



sketch of artwork on site at one location

6 Locations along South Main Identified:

- NW Corner of E. Daggett Ave.
- SE Corner of W. Broadway Ave.
- NW Corner of Annie
- NW Corner of Leuda
- SE Corner of Dashwood
- SW Corner of Oleander

Locations were determined by available space in pedestrian walkway, visibility, and anticipated development.

