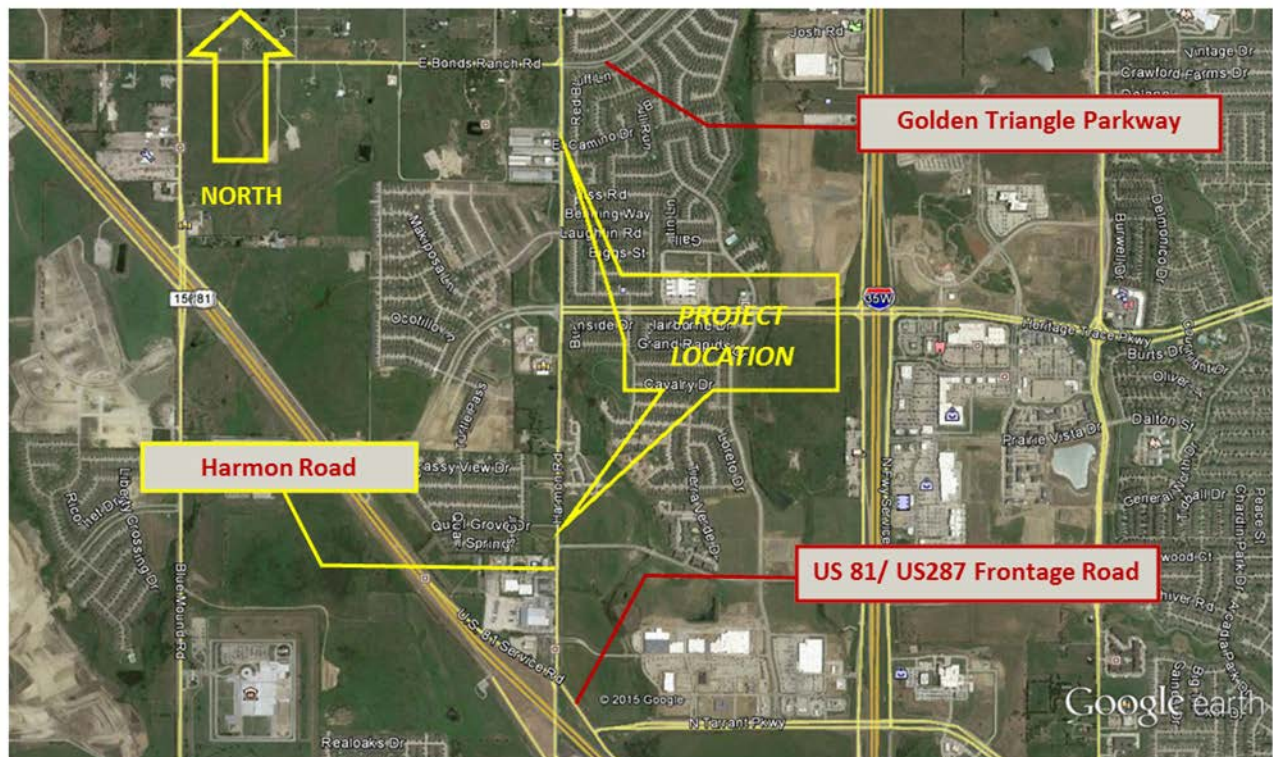


Harmon Road Design and Intersection at Heritage Trace Parkway Design

This project provides for the design of Harmon Road from the US 81/USS287 Frontage Road to Heritage Trace Parkway as a four-lane divided arterial roadway. This project sets the stage for a future construction project.

Harmon Road Right of Way Acquisition and Portion of Construction

This project provides for right of way acquisition and construction of Harmon Road from the US 81/USS287 Frontage Road to Heritage Trace Parkway as a four-lane divided arterial roadway, using all remaining TIF funds.



Copyright 2016 City of Fort Worth. Unauthorized reproduction is a violation of applicable laws. This product is for informational purposes and may not have been prepared for or be suitable for legal, engineering, or surveying purposes. It does not represent an on-the-ground survey and represents only the approximate relative location of property boundaries. The City of Fort Worth assumes no responsibility for the accuracy of said data.